

MICHIGAN
DEPARTMENT OF CONSERVATION
FORESTRY DIVISION

LAND CORNER RECORD

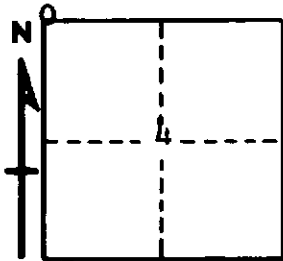
T. 24 N.R. 7 W
25 N.R. 7 W Missaukee
Kalkaska COUNTY

DESCRIPTION OF CORNER Sec. corner common to Sections 4-5-32-33

CORNER MONUMENT Left brass capped pipe in place

DATE MONUMENT PLACED AND WITNESSED April 29, 1966

WITNESSES TO CORNER.....



10" Cedar	S 70 W	20.7'
9" Cedar	S 76 E	10.0'
12" Cedar	N 19 E	19.1'

AND

CIRCLE CORNER REGISTERED

DESCRIPTION IN DETAIL AS TO HOW CORNER WAS LOCATED AND IDENTIFIED OR RESTORED.

This corner was found during a survey in this township. Found a 1" pipe with a brass cap labeled "State of Michigan" at corner previously established by unknown. Apparently perpetuates corner established by Fargo Eng. whose NBTs are evident. Also, a concrete monument removed and lying here. Very old corner.

SURVEYOR'S SEAL

SIGNED Kenneth J. Ostling DATE May 3, 1966
REGISTERED LAND SURVEYOR #10068