

MICHIGAN
DEPARTMENT OF CONSERVATION
FORESTRY DIVISION

LAND CORNER RECORD

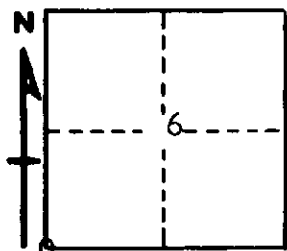
T. 24 N.R. 7 W
T. 24 N.R. 8 W
Missaukee COUNTY

DESCRIPTION OF CORNER Sec. corner common to Sections 6-7-1-12

CORNER MONUMENT Set 1" pipe with 4" Aluminum cap

DATE MONUMENT PLACED AND WITNESSED June 23, 1966

WITNESSES TO CORNER.....



10" H. Maple S 85 E 15.4'

8" H. Maple N 13 W 14.2'

AND

DESCRIPTION IN DETAIL AS TO HOW CORNER WAS LOCATED AND IDENTIFIED OR RESTORED.

This corner was restored while making a retracement in this township. Set corner from the remains of a large Hemlock which we feel very likely was an NBT noted in 1914 survey of this township by county surveyor. This point checks well for line south over 1/4 and section corner, and to section corner east. We found remains of pipe in concrete monument at this point, which appeared to have been destroyed by methods unknown. Could not find location where it was originally placed, but feel this is a valid recovery of this corner.

SURVEYOR'S SEAL

SIGNED *Kenneth J. Ostling* DATE June 24, 1966
REGISTERED LAND SURVEYOR #10068