

MICHIGAN
DEPARTMENT OF CONSERVATION
FORESTRY DIVISION

LAND CORNER RECORD

T. 24 N.R. 7 W

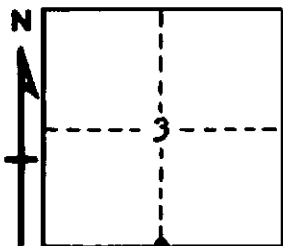
Missaukee COUNTY

DESCRIPTION OF CORNER 1/4 corner common to sections 3 - 10

CORNER MONUMENT Set 1" pipe with 4" aluminum cap

DATE MONUMENT PLACED AND WITNESSED June 29, 1966

WITNESSES TO CORNER.....



CIRCLE CORNER REGISTERED

8" R. Oak N 15 W 17.2'

10" R. Oak S 75 W 23.8'

AND

DESCRIPTION IN DETAIL AS TO HOW CORNER WAS LOCATED AND IDENTIFIED OR RESTORED.

This corner was set by proportionate measurement between section corners. Could locate nothing for previous corner, or USBTs.

SURVEYOR'S SEAL

SIGNED *Kenneth J. O'Connell* DATE July 1, 1966
REGISTERED LAND SURVEYOR #20068