

MICHIGAN
DEPARTMENT OF CONSERVATION
FORESTRY DIVISION

LAND CORNER RECORD

T. 24 N.R. 7 W

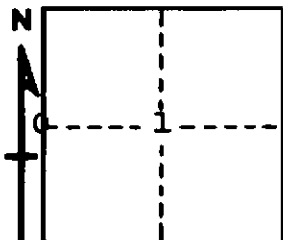
Missaukee COUNTY

DESCRIPTION OF CORNER 1/4 corner common to Sections 1-2

CORNER MONUMENT Set 1" pipe with 4" aluminum cap

DATE MONUMENT PLACED AND WITNESSED May 17, 1966

WITNESSES TO CORNER.....



10" Twin R. Oak S 41 W 90.4'

8" Red Oak S 28 E 61.5'

AND

CIRCLE CORNER REGISTERED

DESCRIPTION IN DETAIL AS TO HOW CORNER WAS LOCATED AND IDENTIFIED OR RESTORED.

This corner was found while making a retracement in this township. Found $1\frac{1}{2}$ " pipe with concrete cylinder at corner. No U.S. evidence left, but fits well with other corners. Old NBT stumps east and NE.

SURVEYOR'S SEAL

SIGNED *Kenneth J. Ostling* DATE May 23, 1966
REGISTERED LAND SURVEYOR #10068