

MICHIGAN  
DEPARTMENT OF CONSERVATION  
FORESTRY DIVISION

LAND CORNER RECORD

T. 24 N.R. 7 W

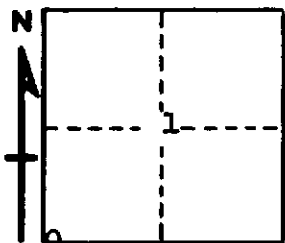
Missaukee COUNTY

DESCRIPTION OF CORNER Section corner common to Sections 1-2-11-12

CORNER MONUMENT Set 1" pipe with 4" aluminum cap

DATE MONUMENT PLACED AND WITNESSED May 17, 1966

WITNESSES TO CORNER.....



CIRCLE CORNER REGISTERED

10" H. Maple N 54 E 36.3'

6" Aspen S 87 W 8.5'

AND

DESCRIPTION IN DETAIL AS TO HOW CORNER WAS LOCATED AND IDENTIFIED OR RESTORED.

This corner was found during a retracement of this township. Found 1" pipe with concrete cylinder at corner, as established in early survey by county surveyor. No positive evidence of USBTs left, but fits good for measurement in all directions. Buried monument at corner with our pipe.

SURVEYOR'S SEAL

SIGNED Kenneth J. Ostling DATE May 23, 1966  
REGISTERED LAND SURVEYOR #10068