

MICHIGAN  
DEPARTMENT OF CONSERVATION  
FORESTRY DIVISION

LAND CORNER RECORD

T. 24 N. R. 7 W

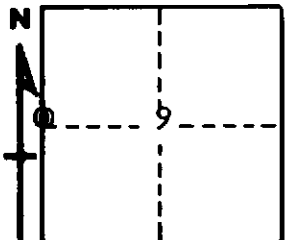
Missaukee COUNTY

DESCRIPTION OF CORNER 1/4 corner common to Sections 8-9

CORNER MONUMENT Set 1" pipe with 4" aluminum cap

DATE MONUMENT PLACED AND WITNESSED April 29, 1966

WITNESSES TO CORNER.....



CIRCLE CORNER REGISTERED

<u>1 1/2" B. Oak</u>	<u>N 22 W</u>	<u>48.6'</u>
<u>*20" W. Pine Stp</u>	<u>N 67 E</u>	<u>22.6'</u>
<u>* Old NBT</u>		

AND

DESCRIPTION IN DETAIL AS TO HOW CORNER WAS LOCATED AND IDENTIFIED OR RESTORED.

This corner was found during a survey in this township. Found small squared post at corner as established in early survey by County Surveyor. Old NBTs still evident, and stumps in place for possible USBTs.

SURVEYOR'S SEAL

SIGNED *Kenneth J. Ostling* DATE May 5, 1966  
REGISTERED LAND SURVEYOR #10068