

MICHIGAN
DEPARTMENT OF CONSERVATION
FORESTRY DIVISION

LAND CORNER RECORD

T. 24 N.R. 7 W

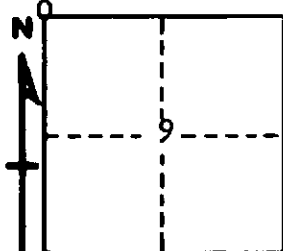
Missaukee COUNTY

DESCRIPTION OF CORNER Sec. corner common to Sections 4-5-8-9

CORNER MONUMENT Set 1" pipe with 1/4" aluminum cap

DATE MONUMENT PLACED AND WITNESSED April 29, 1966

WITNESSES TO CORNER.....



CIRCLE CORNER REGISTERED

<u>5" R. Pine</u>	<u>N 21 E</u>	<u>39.0'</u>
<u>7" R. Pine</u>	<u>S 66 E</u>	<u>58.6'</u>
<u>7" R. Pine</u>	<u>S 5 W</u>	<u>35.2'</u>

AND

DESCRIPTION IN DETAIL AS TO HOW CORNER WAS LOCATED AND IDENTIFIED OR RESTORED.

This corner was found during a survey in this township.
Found 3/4" pipe in concrete cylinder at corner, as established in
previous survey by County Surveyor. Stumps in place for USBTs and
old NBTs evident.

SURVEYOR'S SEAL

SIGNED *Kenneth J. Pelling* DATE May 5, 1966
REGISTERED LAND SURVEYOR #10068