

MICHIGAN  
DEPARTMENT OF CONSERVATION  
FORESTRY DIVISION

LAND CORNER RECORD

T. 24 N.R. 7 W

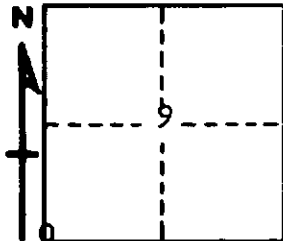
Missaukee COUNTY

DESCRIPTION OF CORNER Sec. corner common to Sections 8-9-16-17

CORNER MONUMENT Left 2" pipe in place below surface

DATE MONUMENT PLACED AND WITNESSED April 29, 1966

WITNESSES TO CORNER.....



12" Twin R. Oak      N 50°E      48.4'

16" B. Oak      S 43 E      77.4'

10" R. Oak      S 68 W      33.4'

AND

CIRCLE CORNER REGISTERED

DESCRIPTION IN DETAIL AS TO HOW CORNER WAS LOCATED AND IDENTIFIED OR RESTORED.

This corner was found while making a survey in this township. Found 2" pipe with concrete cylinder, tipped over below surface of road, as established in early survey by County Surveyor. Fits good to corners north and east and consider it acceptable as proper location for corner.

SURVEYOR'S SEAL

SIGNED *Kenneth J. Ostling*      DATE May 5, 1966  
REGISTERED LAND SURVEYOR #10068