

MICHIGAN
DEPARTMENT OF CONSERVATION
FORESTRY DIVISION

LAND CORNER RECORD

T. 24 N.R. 7^N

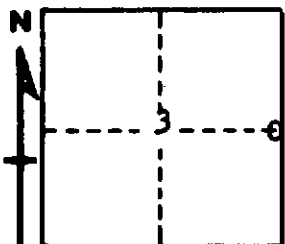
Missaukee COUNTY

DESCRIPTION OF CORNER 1/4 corner common to Sections 2 and 3

CORNER MONUMENT Set 1" pipe with 1/2" aluminum cap

DATE MONUMENT PLACED AND WITNESSED April 11, 1966

WITNESSES TO CORNER.....



16" B. Oak N 70 W 28.6'

6" W. Pine N 62 E 68.9'

AND

CIRCLE CORNER REGISTERED

DESCRIPTION IN DETAIL AS TO HOW CORNER WAS LOCATED AND IDENTIFIED OR RESTORED.

This corner was found while making a survey in this township. Found 1 1/2" pipe in concrete at corner, probably established by county surveyor in early survey. Stumps in place for both USBTs - the N E with possible face.

SURVEYOR'S SEAL

SIGNED Kenneth J. Wetling DATE April 15, 1966
REGISTERED LAND SURVEYOR #10068