

MICHIGAN  
DEPARTMENT OF CONSERVATION  
FORESTRY DIVISION

# LAND CORNER RECORD

T. 24 N.R. 7 W

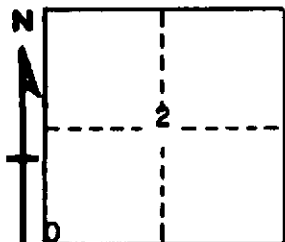
Missaukee COUNTY

DESCRIPTION OF CORNER Sec. corner common to Sections 2-3-10-11

CORNER MONUMENT Left 1" pipe in place below surface

DATE MONUMENT PLACED AND WITNESSED April 25, 1966

WITNESSES TO CORNER.....



12" R. Oak N 26 W 15.7'

10" Twin R. Oak S 85 E 7.8'

8" Maple Clump S 49 W 56.8'

AND

CIRCLE CORNER REGISTERED

DESCRIPTION IN DETAIL AS TO HOW CORNER WAS LOCATED AND IDENTIFIED OR RESTORED.

This corner was found while making  
A survey in this township. Found 1"  
pipe below surface of road, which checks  
very good for distance to good corners  
North and South. Probably set by county  
surveyor in old survey.

SURVEYOR'S SEAL

SIGNED Kenneth J. Osting DATE April 25, 1966  
REGISTERED LAND SURVEYOR #10066