

MICHIGAN
DEPARTMENT OF CONSERVATION
FORESTRY DIVISION

LAND CORNER RECORD

T. 24 N. R. 8 W

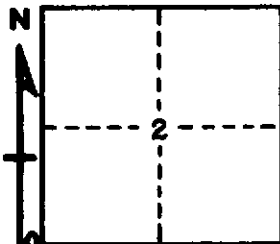
Missaukee COUNTY

DESCRIPTION OF CORNER Section corner common to Sections 2-3-10-11

CORNER MONUMENT Set 1" pipe with 4" aluminum cap

DATE MONUMENT PLACED AND WITNESSED 5-24-67

WITNESSES TO CORNER.....



CIRCLE CORNER REGISTERED

8" R. Oak Clump N 87 E 69.3"

10" W. Oak S 65 W 66.4"

AND

DESCRIPTION IN DETAIL AS TO HOW CORNER WAS LOCATED AND IDENTIFIED OR RESTORED.

This corner was found during a survey in this township. Found old squared stake at corner, and Fargo witnesses supporting this position. Fargo record claims to have identified USBT's in 1912.

SURVEYOR'S SEAL

SIGNED *Kenneth J. Osting* DATE 6-15-67
REGISTERED LAND SURVEYOR #10068