

MICHIGAN  
DEPARTMENT OF CONSERVATION  
FORESTRY DIVISION

# LAND CORNER RECORD

T. 24 N.R. 8 W

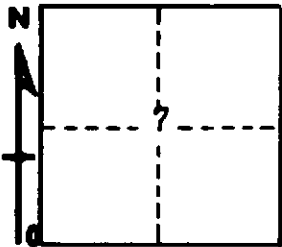
Wexford  
Missaukee COUNTY

DESCRIPTION OF CORNER Section corner common to Sections 7-18-12-13

CORNER MONUMENT Set 1" pipe with 4" Alum. cap

DATE MONUMENT PLACED AND WITNESSED 4-17-67

WITNESSES TO CORNER.....



CIRCLE CORNER REGISTERED

8" Tw. Maple S 57 W 48.6'

8" Tw. Maple N 30 E 24.0'

AND

DESCRIPTION IN DETAIL AS TO HOW CORNER WAS LOCATED AND IDENTIFIED OR RESTORED.

This corner was found during a survey in this area. Found pipe as established in 1912 survey by Fargo Engineering Company for Consumers Power. Fargo record states they restored corner from U.S.B.T.s. Remants of two stumps still in place.

SURVEYOR'S SEAL

SIGNED \_\_\_\_\_ DATE 5-24-67  
REGISTERED LAND SURVEYOR #10068