

# LAND CORNER RECORDATION CERTIFICATE

Filing Requirement of Act 74, Mich. PA 1970

For Corners In: Missaukee Located In \_\_\_\_\_ Corner Code # \_\_\_\_\_  
(County)

1. Public Land Survey		T	<u>24N</u>		R	<u>8W</u>		<u>K3</u>
		T	<u>24N</u>		R	<u>8W</u>		<u>L3</u>
2. Property Controlling in Section	S	T			R			
	S	T			R			
3. Miscellaneous Property in Section	S	T			R			
	S	T			R			

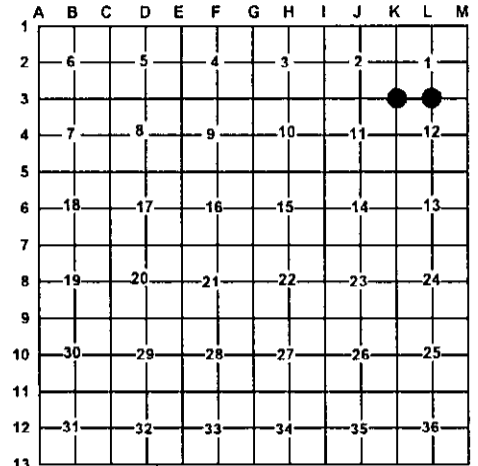
4. Lot No: \_\_\_\_\_ Recorded Plat: \_\_\_\_\_

5. Private Claims: \_\_\_\_\_

I, Craig W. McVean, in a field survey on Dec. 15, 2003 do hereby state that under requirements of PA 74, Michigan PA of 1970, the corner points mentioned in lines 1 and 2 above were in conformance with regulations and rules therefore as required in the current manual of survey instructions of the United States Department of the Interior, Bureau of Land Management or by a decree of a Court of Law and/or that the corner points mentioned in lines 3, 4 and 5 above were in conformance with the rules of the Michigan Board of Land Surveyors or by a Decree of a Court of Law; established, re-established, monumented, recovered, found as expressed below:

**NOTE: Not more than 2 corners, all in the same town and range, may be recorded on this certificate.**

Register of Deeds Stamp & File Number



**A. Description of original monument and accessories and/or subsequent restoration:**

K3 – GLO – Set post – T. Whelpley – 1853  
Beech 14" S301/4°E 14 L.  
Beech 12" S791/2°W 19 L.  
Beech 13" N721/2°W 49 L.

L3 – GLO – Set 1/4 Post – T. Whelpley – 1853  
Beech 8" N10°E 13 L.  
Beech 6" S50°E 25 L.

- DNR Corner Record - K.J. Ostling – 1967 – Set 1" pipe with 4" Aluminum cap by double proportion between Section corners one mile each direction. Nothing left for US evidence on any previous corners.  
10" Red Oak S25°W 11.2'  
8" Red Oak S43°E 40.9'

- DNR Corner Record - K.J. Ostling – 1967 – Set 1" pipe with 4" Aluminum cap at midpoint between Section Corners. No original evidence.  
24" White Pine Stump N52°E 35.1'  
10" Red Oak N44°W 42.1'

**B. Description of corner evidence found and/or method applied in restoring or re-establishing corner:**

K3 – Section Corner common to sections 1, 2, 11 & 12, T24N, R8W - Found 1" pipe with 4" Aluminum DOC cap set by K.J. Ostling, 1967. Red Oak BT to southwest fits witness to Aluminum cap. DOC(DNR) monument accepted as a careful and faithful reestablishment of the position of the original corner.

L3 – 1/4 Corner common to Sections 1 & 12, T24N, R8W - Found 1" pipe with 4" Aluminum DOC cap set by K.J. Ostling, 1967. Found White Pine Stump which was broken and Red Oak BT, which fit witnesses to corner. DOC(DNR) monument accepted as a careful and faithful reestablishment of the position of the original corner.

**C. Description of monument for corner and accessories established to perpetuate locating the position of the corner:**

K3 – 4" Aluminum DOC(DNR) cap on 1" Galv. Iron pipe.  
Set Blue Carsonite Post 1' North  
S89°W 38.02' to set N & T in N side 5" Sugar Maple  
S24°W 11.63' to set N & T in NE side 16" twin Oak (KJO)  
N50°E 55.32' to set N & T in SE side 10" triple Sugar Maple  
S78°E 50.21' to set N & T in N side 4" Red Maple in clump

L3 – 4" Aluminum DOC(DNR) cap on 1" Galv. Iron pipe.  
Set Blue Carsonite Post 1' North  
N44°W 41.81' to set N & T in NE side twin 20" Oak (KJO)  
S52°W 76.67' to set N & T in S side 27" Oak  
N63°E 43.92' to set N & T in SE side 16" Oak  
N24°W 50.04' to set N & T in E side 9" Oak

Signed by:

*Craig W. McVean*

Date:

5/20/2004

Surveyor's Michigan License No.:

39088

