

MICHIGAN
DEPARTMENT OF CONSERVATION
FORESTRY DIVISION

LAND CORNER RECORD

T. 29 N.R. 1 E
T. 29 N.R. 2 E

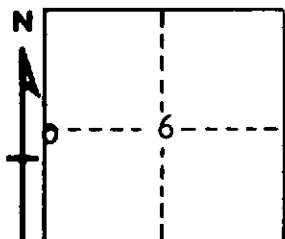
Montmorency COUNTY

DESCRIPTION OF CORNER 1/4 corner common to Sections 1 and 6

CORNER MONUMENT Set 1" pipe with 4" Aluminum cap

DATE MONUMENT PLACED AND WITNESSED April 22, 1966

WITNESSES TO CORNER.....



CIRCLE CORNER REGISTERED

10" R. Pine N 17 E 78.8'

12" W. Pine N 78 E 52.7'

AND

DESCRIPTION IN DETAIL AS TO HOW CORNER WAS LOCATED AND IDENTIFIED OR RESTORED.

This corner was found while making a survey of Section 6. Found 1/2" pipe at corner as established in previous survey, probably by Frank Smith. NW USBT down, but showing evidence of both faces.

SURVEYOR'S SEAL

SIGNED Kenneth J. Ostling DATE April 26, 1966
REGISTERED LAND SURVEYOR #10068