

# LAND CORNER RECORDATION CERTIFICATE

Filing Requirement of Act 74, Mich. PA 1970

For Corners In:  
Montmorency Located In \_\_\_\_\_ Corner Code # \_\_\_\_\_  
 (County)

1. Public Land Survey	T	<u>30N</u>	R	<u>2E</u>	<u>D-7</u>
	T	<u>30N</u>	R	<u>2E</u>	<u>C-7</u>
2. Property Controlling in Section	S	_____	T	_____	_____
	S	_____	T	_____	_____
3. Miscellaneous Property in Section	S	_____	T	_____	_____
	S	_____	T	_____	_____

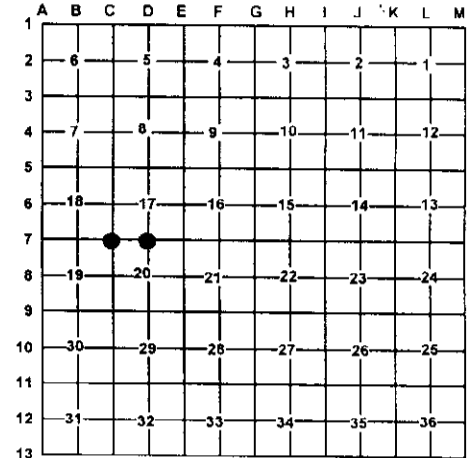
4. Lot No: \_\_\_\_\_ Recorded Plat: \_\_\_\_\_

5. Private Claims: \_\_\_\_\_

I, Carl T. Kiskila, in a field survey on April 9, 2001 do hereby state that under requirements of PA 74, Michigan PA of 1970, the corner points mentioned in lines 1 and 2 above were in conformance with regulations and rules therefore as required in the current manual of survey instructions of the United States Department of the Interior, Bureau of Land Management or by a decree of a Court of Law and/or that the corner points mentioned in lines 3, 4 and 5 above were in conformance with the rules of the Michigan Board of Land Surveyors or by a Decree of a Court of Law; established, re-established, monumented, recovered, found as expressed below:

**NOTE: Not more than 2 corners, all in the same town and range, may be recorded on this certificate.**

Register of Deeds Stamp & File Number



A. Description of original monument and accessories and/or subsequent restoration:

D-7 G.L.O. Lewis Clason D.S. 1839  
 Marked Cedar 10" for quarter section post  
 No witnesses given

C-7 G.L.O. Lewis Clason D.S. 1839  
 Set post corner sections 17, 18, 19, and 20  
 Wit: Beech 12 N31°E 41 links  
 Beech 12 S19°W 47 links

L.1 P.406 Larry G. Beauregard R.L.S. #18654 Nov. 1987  
 Found 4" conc. monument set by L. Briley & P. Beltz 1941  
 Wit: N45°E 50.0' 6" conc. monument, S45°W 50.06'  
 6" conc. monument, S03°W 14.17' 8" Cedar, S30°E 7.02'  
 6" Cedar, S49°E 20.60' 8" cedar.

L.1 P.225 Ronald R. Bischer R.L.S. #22420 July 1978  
 2 1/2" concrete Mon. by Smith 1941.  
 Wit: West 33.00' Conc. Mon., East 33.00' Conc. Mon.,  
 N54°E 11.40' 10" Maple, S04°E 20.06' Lynn.

Donald E. Marlatt R.L.S. 18660 L.C.R.C., Dec. 1989.  
 Found monument wit: S70°W 9" Cedar 3.63', S70°E  
 8" Cedar 7.04', N35°W 7" Cedar 14.16'

B. Description of corner evidence found and/or method applies in restoring or re-establishing corner:

D-7 Found concrete monument with alum. Montmorency  
 County cap L.S. #25852 Frederick J. King

C-7 Found concrete monument with alum. Montmorency  
 county cap.

C. Description of monument for corner and accessories established to perpetuate locating the position of the corner:

D-7 Found concrete monument with alum. Montmorency  
 County cap  
 Wit: 6" Cedar S86°W 3.64'  
 5" Cedar N01°E 14.14'  
 12" Cedar N83°E 18.63'  
 5" Cedar S32°E 7.03'

C-7 Found concrete monument with alum. Montmorency  
 County cap  
 wit: 8" Maple S64°W 11.86'  
 8" Maple N56°E 11.23'  
 18" Maple S02°E 20.49'  
 Concrete Mon. N89°W 32.95'  
 Concrete Mon. S83°E 32.91'

Signed by: Carl T. Kiskila  
 Surveyor's Michigan License No.: 33981

Date: 3-7-02

