

LAND CORNER RECORDATION CERTIFICATE
Filing Requirement of Act 74, Mich. P.A. 1970

For corners in
NORTHRENCY
 (County)

Located In: _____ Corner Code ~~##~~

1. Public Land Survey	T <u>32N</u> R <u>4E</u>	<u>C-5, C-6</u>
	T _____ R _____	_____
	T _____ R _____	_____
	T _____ R _____	_____
2. Property Controlling in Section	S <u>18</u> T _____ R _____	<u>9, 14</u>
	S _____ T _____ R _____	_____
3. Miscellaneous Property in Sec.	S _____ T _____ R _____	_____
	S _____ T _____ R _____	_____

Register of Deeds Stamp & File Number

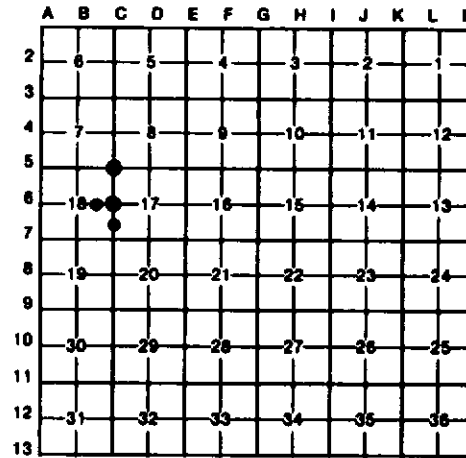
4. Lot No. _____, Recorded Plat _____
 5. Private Claims _____

I, C.T. KIISKILA, in a field survey on OCTOBER 27, 19 94, do hereby certify that under requirements of P.A. 74, Michigan P.A. of 1970, the corner points mentioned in lines 1 and 2 above were in conformance with regulations and rules therefore as required in the current manual of survey instructions of the United States Department of the Interior, Bureau of Land Management or by a decree of a Court of Law and/or that the corner points mentioned in lines 3, 4 and 5 above were in conformance with the rules of the Michigan Board of Land Surveyors or by a Decree of a Court of Law; established, re-established, monumented, re-monumented, recovered, found as expressed below:

NOTE: Not more than 4 corners, all in the same town and range, may be recorded on this certificate.

A. Description of original monument and accessories and/or subsequent restoration:
 C-5 C-6 9

(NO EVIDENCE OF G.L.D. CORNER, B.T.'S, LINE TREES & TOPOGRAPHY, AS CALLED OUT IN THE G.L.D. LINE NOTES; UNLESS NOTED IN ITEM "B" BELOW.)



B. Description of corner evidence found and/or method applied in restoring or reestablishing corner:

C-5 REESTABLISHED NE COR S-18, DOUBLE DOWN FD E 1/4 & S 1/8 COR ON E LINE S-7 (BOTH FD IRONS BY D.MARLATT, PS#18660).	C-6 REESTABLISHED E 1/4 COR S-18 MIDWAY & ON LINE BETWEEN REESTAB'D NE & FD SE COR OF S-18. COR FALLS IN LOW, WET AREA. WINDING N-S TRAIL RD IS 1100'+/- E'LY. E EDGE OF WILDLIFE OPENING IS 385'+/- 15' WEST.	9 ESTABLISHED SE COR OF SW 1/4 OF NE 1/4 OF S-18 PER STANDARD BLM INSTRUCTIONS. COR IS AT S'LY EDGE OF CEDAR SWAMP. E-W TRAIL ROAD IS 316' SOUTH.	14 ESTABLISHED SE COR OF NE 1/4 OF SE 1/4 S-18 PER STANDARD BLM INSTRUCTIONS.
---	--	---	---

C. Description of monument for corner and accessories established to perpetuate locating the position of the corner:

C-5 SET BNR MON & CED POST. 4-8" TRPL MAPLE N72°W 3.59' 3" OAK S75°E 19.39' 14" R PINE S34°W 31.06' 2" W PINE N23°E 21.53'	C-6 DROVE 1" X 48" GALV PIPE W/ALUM BNR CAP. SET CED POST. 5" BALSAM N40°W 14.9' 5" W BIRCH S60°E 12.7' 4" MAPLE S05°W 32.0' 7" MAPLE S75°W 15.4'	9 DROVE 1" X 60" GALV PIPE W/PS CAP. SET CED POST W/LOC TAG. 12" CEDAR N05°W 9.90' 6" CEDAR N40°E 8.94' 12" CEDAR S85°E 11.90' 12" CEDAR S20°W 12.38'	14 DROVE 5/8" X 32" REROD W/CAP & CEDAR POST. 4" TM MAPLE S54°W 7.43' 5" TM MAPLE N23°W 10.90' 5" MAPLE N67°E 21.88' 18" SPRUCE S79°E 29.13' FD 2" PIPE S66°W 29.33'
--	---	---	---

Signed by Carl T Kiiskila Date 2-27-97
 Surveyor's Michigan License No. 33981