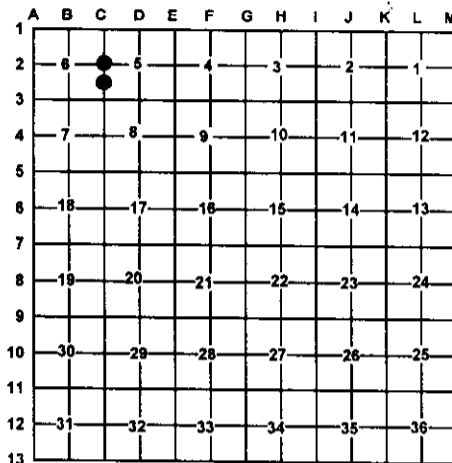


LAND CORNER RECORDATION CERTIFICATE

Filing Requirement of Act 74, Mich. PA 1970

For Corners In: <u>Montmorency</u> (County)	Located In T <u>32N</u> R <u>4E</u> T _____ R _____	Corner Code # C-2 _____ _____
1. Public Land Survey		
2. Property Controlling in Section	S <u>6</u> T <u>32N</u> R <u>4E</u> S _____ T _____ R _____	14 _____ _____
3. Miscellaneous Property in Section	S _____ T _____ R _____ S _____ T _____ R _____	_____ _____
4. Lot No: _____	Recorded Plat: _____	
5. Private Claims: _____		

Register of Deeds Stamp & File Number



I, Carl T. Kiiskila, in a field survey on August, 2001 do hereby state that under requirements of PA 74, Michigan PA of 1970, the corner points mentioned in lines 1 and 2 above were in conformance with regulations and rules therefore as required in the current manual of survey instructions of the United States Department of the Interior, Bureau of Land Management or by a decree of a Court of Law and/or that the corner points mentioned in lines 3, 4 and 5 above were in conformance with the rules of the Michigan Board of Land Surveyors or by a Decree of a Court of Law; established, re-established, monumented, recovered, found as expressed below:

NOTE: Not more than 2 corners, all in the same town and range, may be recorded on this certificate.

A. Description of original monument and accessories and/or subsequent restoration:

C-2 G.L.O. Josiah Knauer D.S. 1856
 Set quarter section post
 Wit: Spruce 4 S52°W 39 links
 Spruce 4 N33°E 17 links

14- This corner position was not established during the original government survey.

B. Description of corner evidence found and/or method applies in restoring or re-establishing corner:

C-2 Re-established the East quarter corner of section 6 online between found corners C-1 and C-3 prorated to U.S. runout.

14- Established the Southeast corner of the Northeast quarter of the Southeast quarter of section 6 as per B.L.M. instructions for the subdivision of a section.

C. Description of monument for corner and accessories established to perpetuate locating the position of the corner:

C-2 Set D.N.R. Monument
 Wit: 9" Jack Pine N28°E 28.84'
 8" Jack Pine N80°E 32.72'
 8" Jack Pine West 9.43'
 6" Jack Pine South 29.45'

14- Set 5/8" x 32" rered with P.S. cap #33981
 Wit: 3" Maple S74°W 22.72'
 6" Maple N56°W 33.03'
 5" Maple N18°W 28.77'
 3" Maple N40°W 34.20'

Signed by:

Carl T. Kiiskila

Date:

1-10-02

Surveyor's Michigan License No.:

33981

