

**SURVEY &
REMONUMENTATION**

APR 24 1995

COMMISSION

1994 NEWAYGO COUNTY REMONUMENTATION PROJECT

LAND CORNER RECORDATION CERTIFICATE
Filing Requirement of Act 74, Mich. P.A. 1970

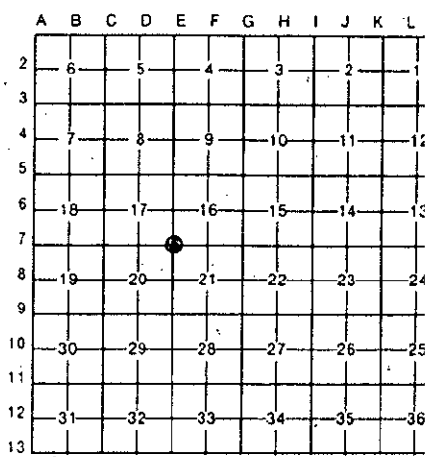
VOL 001 PAGE 72

For corners in
Newaygo
(County)

	Located In:	Corner Code #
1. Public Land Survey	T <u>11N</u> R <u>11W</u>	<u>E-7</u>
	T _____ R _____	_____
	T _____ R _____	_____
	T _____ R _____	_____
2. Property Controlling in Section	S _____ T _____ R _____	_____
	S _____ T _____ R _____	_____
3. Miscellaneous Property in Sec.	S _____ T _____ R _____	_____
	S _____ T _____ R _____	_____

NEWAYGO COUNTY
REGISTER OF DEEDS
MARLENE TOOGOOD
'95 MAR 14 PM 3 5
Marlene Toogood
Register of Deeds Stamp & File Number

4. Lot No. _____, Recorded Plat _____
5. Private Claims _____



I, Norman L. Ochs, in a field survey on October 12, 1994
do hereby certify that under requirements of P.A. 74, Michigan P.A. of 1970, the corner points mentioned in lines 1 and 2 above were in conformance with regulations and rules therefore as required in the current manual of survey instructions of the United States Department of the Interior, Bureau of Land Management or by a decree of a Court of Law and/or that the corner points mentioned in lines 3, 4 and 5 above were in conformance with the rules of the Michigan Board of Land Surveyors or by a Decree of a Court of Law; established, re-established, monumented, re-monumented, recovered, found as expressed below:

NOTE: Not more than 4 corners, all in the same town and range, may be recorded on this certificate.

N.W. Corner, Section 21, Ensley Twp., Newaygo County, MI

A. Description of original monument and accessories and/or subsequent restoration:
G.L.O. James H. Mullett 1837 W.S. Merrill (Co. Surveyor) Book A Pages 97 and 98 Sept. 29, 1887
18" Maple S76°E 31 lks. (19.8') #1 Measured 39.94 ch. (2636.04 feet) from the N.W. Cor. to the W. 1/4 Cor.
18" Maple N66°W 6 lks. (3.96') #2 of Sec. 21.

OVER----->

April 22, 1887 W.S. Merrill (Co. Surveyor) Book A Page 91 and Field Book 28 Page 149
16" P. Stp. S10 1/2°E 99 lks (65.34') #3 40" P. Stp. N30°E 52 lks. (34.32') #4
Measured 39.74 ch. (2622.84 feet) from the S.E. Cor. to the S. 1/4 Cor. of Sec. 17 and measured 39.94 ch. (2636.04 feet) from the S.E. Cor. to the E. 1/4 Cor. of Sec. 17.

B. Description of corner evidence found and/or method applied in restoring or reestablishing corner:
Found 5/8" Wrought Iron on top of 3/4" iron and part of broken glass bottle and measured 2624.50 feet from the N.E. cor. to the N. 1/4 Cor. of Sec. 20 and measured 2637.18 feet from the N.E. Cor. to the E. 1/4 Cor. of Sec. 20 and the condition of the recorded witnesses are: #1 thru #10 Gone, #11 Good Condition, #12 Gone.

C. Description of monument for corner and accessories established to perpetuate locating the position of the corner:
Removed 5/8" Iron and 3/4" Iron and set a 4" dia. Harrison Cast Iron Monument 20" long marked "County Surveyor" as a substantial marker for the section corner and is accepted as a careful and faithful reestablishment of the original corner.
8" Tw. Elm N32°E 78.45' 60 D Nail in S.E. side of tree
Power Pole N76°E 87.23' #11 P.K. Nail in South side of pole
Tele. Box S39°E 51.31' (Nw. Cor. of foundation)
Tele. Box S48°W 36.96' (N.E. Corner)
Fence Post N35°W 50.35' #12 (to face of post)



Signed by *Norman L. Ochs* Date November 21, 1994
Surveyor's Michigan License No. #22439

Approved by Peer Review Group on November 22, 1994
Norman L. Ochs, County Representative. *N.L.O.*

A. Description.....(Continued)

Book # Unknown Page 138

Oak S.E. 42.6' #5

U.S.G.S. Mon. Rock N.W. 29' #6

Delos G. Anderson (Co. Surveyor) Book A Pages 259 and 260 June 20, 1899
Measured 40.00 chains (2640 feet) from the S.W. Cor. to the S. 1/4 Cor. of Sec. 16.

William M. Jacques (Co. Surveyor) May 15, 1903 Field Book 1 Pages 10 and 11
Iron Corner established by W.S. Merrill (Co. Surveyor)
Measured 39.69 (2619.54 feet) from the N.E. Cor. to the N. 1/4 Cor. of Sec. 20 and measured 40.08 chains (2645.28 feet) from the N.E. Cor. to the E. 1/4 Cor. of Sec. 20.

May 15, 1903 Field Book 9 Page 21
Measured 39 chains 53 1/2 feet (2627.5 feet) from the N.E. Cor. to the N. 1/4 Cor. of Sec. 20 and measured 40 chains 1 foot (2641 feet) from the N.E. Cor. to the E. 1/4 Cor. of Sec. 20.

Field Book 9 Page 9 1903
Measured 79.90 chains (5273.40 feet) from the N.E. Cor. to the S.E. Cor. of Sec. 17 and measured 39.92 chains (2634.72 feet) from the N.E. Cor. to the E. 1/4 Cor. of Sec. 20.

Lyle S. Shepherd R.L.S. #503 Witness Book 2 Page 174

1" Iron Rod

T. Pole N40°W 30.8' #7

Oak S.E. 42.6' #5

Corner Fence Post S45°W 33.7' #8

N.C.R.C. Sheet Iron Rod

T. Pole N40°W 35.2' #7

S.W. Leg Tower N40°E 51.3' #9

Fence Corner S.W. 33.7' #8

U.S.G.S. Top of Rock N.W. 29' #6

Glen Hackhardt R.L.S. #25844 L.C.R.C. #815 October 1987

5" Sass. S20°W 83.55' #10

C.P. N70°E 86.75' #11

Centerline Corner Fence Post N45°W 50.4' #12

See survey recorded in Liber 346 Page 4463

Measured 2624.86 feet from the S.E. Cor. to the S. 1/4 Cor. of Sec. 17.

Glen Hackhardt R.L.S. #25844 August 7, 1990

See survey recorded in Liber 351 Page 2577

5/8" Bar

P. Pole N70°E 86.15' #11

P. Pole N50°E 112.35' #13

Center of Fence Post N45°W 50.40' #12