

**SURVEY &
REMONUMENTATION**

APR 24 1995

COMMISSION

1994 NEWAYGO COUNTY REMONUMENTATION PROJECT

LAND CORNER RECORDATION CERTIFICATE
Filing Requirement of Act 74, Mich. P.A. 1970

For corners in

<u>Newaygo</u> <small>County</small>	Located In:	Corner Code #
1. Public Land Survey	T <u>11N</u> R <u>11W</u>	E-8
	T _____ R _____	_____
	T _____ R _____	_____
	T _____ R _____	_____
2. Property Controlling in Section	S _____ T _____ R _____	_____
	S _____ T _____ R _____	_____
3. Miscellaneous Property in Sec.	S _____ T _____ R _____	_____
	S _____ T _____ R _____	_____

4. Lot No. _____, Recorded Plat _____
5. Private Claims _____

VOL 001 PAGE 73
VOL 001 PAGE 73
NEWAYGO COUNTY
REGISTER OF DEEDS
MARLENE TOOGOOD
'95 MAR 14 PM 3 51
Marlene Toogood
Register of Deeds Stamp & File Number

I, Norman L. Ochs, in a field survey on October 12, 19 94, do hereby certify that under requirements of P.A. 74, Michigan P.A. of 1970, the corner points mentioned in lines 1 and 2 above were in conformance with regulations and rules therefore as required in the current manual of survey instructions of the United States Department of the Interior, Bureau of Land Management or by a decree of a Court of Law and/or that the corner points mentioned in lines 3, 4 and 5 above were in conformance with the rules of the Michigan Board of Land Surveyors or by a Decree of a Court of Law; established, re-established, monumented, re-monumented, recovered, found as expressed below:

NOTE: Not more than 4 corners, all in the same town and range, may be recorded on this certificate.

W. 1/4 Corner, Section 21, Ensley Twp., Newaygo Co., MI

A. Description of original monument and accessories and/or subsequent restoration:

G.L.O. James H. Mullett 1837
12" Maple N47°E 30 lks. (19.8') #1
12" Maple S37°W 20 lks. (13.20') #2

W.S. Merrill (Co. Surveyor) Book A Pages 97 and 98 Sept. 29, 1887
Measured 39.94 chains (2636.04 feet) from the W. 1/4 Cor. to the N.W. Cor. of Sec. 21.

W.S. Merrill (Co. Surveyor) Sept. 28, 1882
Book 28 Pages 146 and 147
40" Pine S10°W 26 lks. (17.16') #3
12" Pine N18°W 54 lks. (35.64') #4

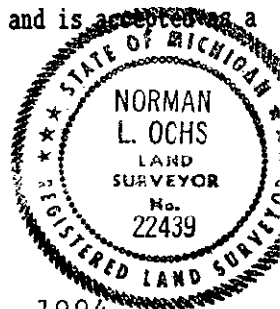
OVER----->
William M. Jacques (Co. Surveyor) Book 1 Pages 10 and 11 May 15, 1903
Measured 40.08 ch. (2645.28 feet) from the W. 1/4 Cor. to the N.W. Cor. of Sec. 21 and measured 40.07 ch. (2644.62 feet) from the W. 1/4 Cor. to the S.W. Cor. of Sec 21 and measured 39.87 ch. (2631.42 feet) from the E. 1/4 Cor. to the C. 1/4 Cor. of Sec. 20.

B. Description of corner evidence found and/or method applied in restoring or reestablishing corner:

Found 6"-5"-13" pointed stone 12 inches deep on South side of 1"x16" Wrought iron over a 1/2" x 12" rebar and measured 2637.18 feet from the N.W. Cor. to the W. 1/4 Cor. of Sec. 21 and measured 2641.32 feet from the W. 1/4 Cor. to the S.W. Cor. of Sec. 21 and the condition of recorded witnesses are: #1 thru #4 Gone, #5 Good Condition, #6 Gone, #7 and #8 Good Condition.

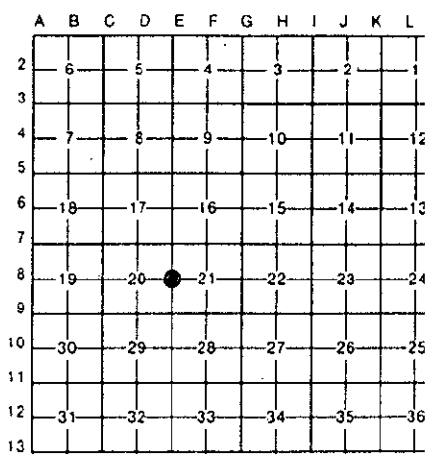
C. Description of monument for corner and accessories established to perpetuate locating the position of the corner:

Removed pointed stone with "+" (cross) on side next to 1" wrought iron and rebar and set a 4" dia. Harrison Cast Iron Monument 20" long marked "County Surveyor" as a substantial marker for the section corner and is accepted as a careful and faithful reestablishment of the original corner.
18" Double W. Oak N42°E 64.50' Found nail in S.E. side of tree #8
18" R. Oak N73°E 44.69' Found Nail in S.W. side of tree
36" Oak S62°W 57.45' Set spike in N.W. side of tree #5
28" Beech N50°W 51.50' Set Nail in N.E. side of tree #7



Signed by Norman L. Ochs Date November 21, 1994
Norman L. Ochs #22439

Surveyor's Michigan License No. #22439
Approved by Peer Review Group on November 22, 1994
Norman L. Ochs, County Representative.



A. Description....(Continued)

Book 9 Page 22 May 15, 1903

Measured 40 ch. 10 feet (2650 feet) from the E. 1/4 Cor. to the S.E. Cor. of Sec. 20 and measured 80 ch. 21 3/4 feet (5301.75 feet) from the E. 1/4 Cor. to the E. 1/4 Cor. of Sec. 29.

N.C.R.C. Sheet 1967

Iron - Pointed Stone

18" W. Oak S63°W 57.45' #5

14" Beech N49°W 51.5' #6

12" Apple S60°E 51.35' #7

Glen Hackbardt R.L.S. #25844 Recorded in Series J No. 7743 and 7744

3/4" Rod March 28, 1979

18" Oak S80°W 56.50' #5

18" Beech N45°W 51.35' #7

10" D.B. Oak N40°E 64.50' #8

Glen Hackbardt R.L.S. #25844 Recorded in Liber 351 Page 2577

1" Bar

18" Oak S63°W 57.45' #5

14" Oak N35°E 64.75' #8

14" Beech N49°W 51.85' #7