

1994 NEWAYGO COUNTY REMONUMENTATION PROJECT

LAND CORNER RECORDATION CERTIFICATE
Filing Requirement of Act 74, Mich. P.A. 1970

VOL 001 PAGE 78

NEWAYGO COUNTY
REGISTER OF DEEDS
MARLENE TOOGOOD

'95 MAR 14 PM 3 52

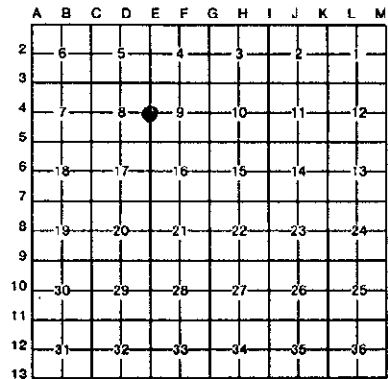
Marlene Toogood
Register of Deeds Stamp & File Number

For corners in Newaygo (County) Located in: Corner Code E-4

1. Public Land Survey	<u>T11N</u> R <u>12W</u>	<u>E-4</u>
	T _____ R _____	_____
	T _____ R _____	_____
2. Property Controlling in Section	S _____ T _____ R _____	_____
	S _____ T _____ R _____	_____
3. Miscellaneous Property in Sec.	S _____ T _____ R _____	_____
	S _____ T _____ R _____	_____

4. Lot No. _____, Recorded Plat _____

5. Private Claims _____



I, Norman L. Ochs, in a field survey on October 13, 19 94, do hereby certify that under requirements of P.A. 74, Michigan P.A. of 1970, the corner points mentioned in lines 1 and 2 above were in conformance with regulations and rules therefore as required in the current manual of survey instructions of the United States Department of the Interior, Bureau of Land Management or by a decree of a Court of Law and/or that the corner points mentioned in lines 3, 4 and 5 above were in conformance with the rules of the Michigan Board of Land Surveyors or by a Decree of a Court of Law; established, re-established, monumented, re-monumented, recovered, found as expressed below:

NOTE: Not more than 4 corners, all in the same town and range, may be recorded on this certificate.

E-1/4 Corner, Sec. 8, Grant Twp., Newaygo County MI

A. Description of original monument and accessories and/or subsequent restoration:

GLO John Hodgson 1837
W. Oak 10" S60°W 41 lks #1
B. Oak 10" S74°E 64 lks #2

Field Book 5 Page 47 Newaygo County
Survey Office(N.E. & S. Co.)
Cast wagon skein w/broken glass around
stake July 16, 1906.
P.Stp. 36" S34-1/2°E 81 lks (53.46') #3
Andrew Jackson 4/25/58. Drg #McD14518-58
Measured 2613.68 ft. from the W-1/4 cor.
to the NW cor. of Sec. 9 and measured
2654.20 ft. from W-1/4 cor. to C-1/4 cor.

NCRC
SW Cor. bridge floor N05°W 149.3 #4
P.Pole S80°W 109.1' #5
1988 N.E. & S. Co. 1" Pipe
Tw. Maple 20" S60°E 142.23' #6
P.Pole S80°W 109.51' Spk. S. side #5

B. Description of corner evidence found and/or method applied in restoring or reestablishing corner: of Sec. 9.
Clump Cherry S55°W 82.97' Spk. N side #7

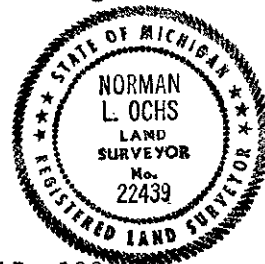
Measured 2611.91 ft. from the E-1/4 cor. to the NE cor. Sec. 8 and measured 2659.51 ft. from the W-1/4 cor. to the C-1/4 cor. of Sec. 9.

Desc. of corner evidence....
In October, 1994, I, Norman L. Ochs, found 1" pipe. Replaced with 4" Harrison cast iron monument in exact location. I measured 2611.99 ft. from the NE corner to the E-1/4 cor. of Section 8 and measured 2638.16 feet from the E-1/4 corner to the SE corner of Sec. 8.

Condition of recorded witnesses is: #1 thru #4 gone, #5 thru #7 good condition.

C. Description of monument for corner and accessories established to perpetuate locating the position of the corner:

10/3/94 Found 1" pipe removed and set 4" dia. Harrison cast iron monument 20" long and is accepted as a careful and faithful perpetuation of the original corner.
Tw. Maple 20"-18" S60°E 142.26' Spk. on N side #6.
P.Pole S80°W 109.48' #5 Spk on S side #5.
Clp. Cherry 4"-8" S55°W 82.95' Spk. on Nly side. #7
Top CL Tel. riser S40°W 40.14'.



Signed by Norman L. Ochs
Norman L. Ochs 22439
Surveyor's Michigan License No.

Date October 17, 1994

Approved by Peer Review Group on October 19, 1994.
Norman L. Ochs, County Representative.

FORM APPROVED BY MICHIGAN STATE BOARD OF LAND SURVEYORS, JAN. 28, 1971
REVISED MAY 14, 1975
REVISED JAN., 1983

N. L. O.

SURVEY &
REMONUMENTATION

DEC 07 2000

SECTION