

**SURVEY &
REMONUMENTATION**

1994 NEWAYGO COUNTY REMONUMENTATION PROJECT
APR 24 1995
LAND CORNER RECORDATION CERTIFICATE
 Filing Requirement of Act 74, Mich. P.A. 1970

VOL **001** PAGE **92**

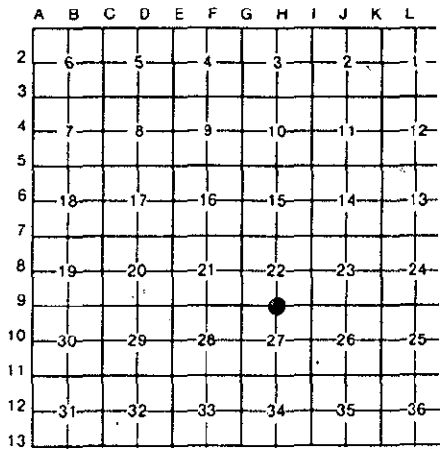
For corners in **COMMISSION**

<u>Newaygo</u> <small>(County)</small>	Located In:	Corner Code #
1. Public Land Survey	T <u>12N</u> R <u>13W</u>	<u>H-9</u>
	T _____ R _____	_____
	T _____ R _____	_____
	T _____ R _____	_____
2. Property Controlling in Section	S _____ T _____ R _____	_____
	S _____ T _____ R _____	_____
3. Miscellaneous Property in Sec.	S _____ T _____ R _____	_____
	S _____ T _____ R _____	_____

NEWAYGO COUNTY
 REGISTER OF DEEDS
 MARLENE TOOGOOD
 '95 MAR 14 PM 3 54
Marlene Toogood
 Register of Deeds Stamp & File Number

4. Lot No. _____, Recorded Plat _____
 5. Private Claims _____

I, Norman L. Ochs, in a field survey on November 9, 19 94, do hereby certify that under requirements of P.A. 74, Michigan P.A. of 1970, the corner points mentioned in lines 1 and 2 above were in conformance with regulations and rules therefore as required in the current manual of survey instructions of the United States Department of the Interior, Bureau of Land Management or by a decree of a Court of Law and/or that the corner points mentioned in lines 3, 4 and 5 above were in conformance with the rules of the Michigan Board of Land Surveyors or by a Decree of a Court of Law, established, re-established, monumented, re-monumented, recovered, found as expressed below:



NOTE: Not more than 4 corners, all in the same town and range, may be recorded on this certificate.

N. 1/4 Corner, Section 27, Garfield Twp., Newaygo Co., MI

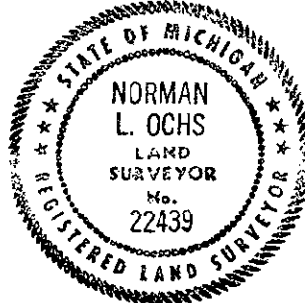
A. Description of original monument and accessories and/or subsequent restoration:
 G.L.O. J. H. Mullett 1837
 10 Pine N47°E 26 lks. (17.16') #1
 8" B. Ash S52°E 20 lks. (13.2') #2
 Delos G. Anderson (Co. Surveyor) Sept. 3, 1895
 Book A. pg.'s 175 and 176:
 Original Cor. in center of crossway
 Measured 40.02 ch. (2641.32 feet) from the N. 1/4 to the N.W. Cor. of Sec. 27 and measured 78.87 ch. (5205.42 feet) from the N. 1/4 Cor. to the S. 1/4 Cor. of Sec. 27.
 J.C. Brewster (Co. Surveyor) Book A pg. 124 Feb. 23, 1891
 Measured 39.89 ch. (2632.74 feet) from the S.W. Cor. to the S. 1/4 Cor. of Sec. 22. Measured 39.87 ch. (2631.42 feet) from the S. 1/4 Cor. to C. 1/4 Cor. of Sec. 22 and measured 40.40 ch. (2666.40 feet) from the S. 1/4 Cor. to the S.E. Cor. of Sec. 22.

OVER----->

B. Description of corner evidence found and/or method applied in restoring or reestablishing corner:
 Found 1" Angle Iron 1 foot North of the centerline of the East and West Road and measured 2630.22 feet from the N.W. Corner to the N. 1/4 Corner of Sec. 27 and measured 2669.52 feet from the N. 1/4 Corner to the N.E. Corner of Sec. 27. and condition of recorded witnesses are: #1 thru #5 Gone, #6 Stump, #7 thru #8 Good Condition, #9 thru #11 Gone.

C. Description of monument for corner and accessories established to perpetuate locating the position of the corner:
 Removed 1" Angle Iron and set a 4" dia. Harrison Cast Iron Monument 20" long marked County Surveyor as a substantial marker for the Section Corner and is accepted as a careful and faithful reestablishment of the original corner.

- 14" W. Oak N65°E 69.80' Spike in South side of tree #9
- 36" Maple S68°W 56.75' Spike in Easterly side of tree #8
- 16"-14" W. Oak N65°E 69.83' Spike in Southwest side of tree #7
- 4"-6" Tw. Apple N75°W 31.71' Spike in Southwest side of tree



Signed by Norman L. Ochs Date November 21, 1994
 Surveyor's Michigan License No. #22439

Approved by Peer Review Group on November 22, 1994
 Norman L. Ochs, County Representative. *N.L.O.*
 FORM APPROVED BY MICHIGAN STATE BOARD OF LAND SURVEYORS, JAN. 28, 1971
 REVISED MAY 14, 1975
 REVISED JAN., 1983

A. Description.....(Continued)

Sammy Barnett R.L.S. #16923

June 4, 1973

Measured 2629.64 feet from the N.W. Cor. to the N. 1/4 Cor. of Sec. 27. Measured 2669.02 feet from the N. 1/4 Cor. to the N.E. Cor. of Sec. 27.

C.F. Zimmerman #7301 P.E. 1974

Found 3/4" Iron Recorded in Series O, No. 4716

12" Ash S50°E 30.11' #3

14" W. Oak N55°E 53.5' #4

30" Maple S80°W 77.23' #5

William Devette R.L.S.#

Measured 2629.62 feet from the N.W. Cor. to the N. 1/4 Cor. of Sec. 27 and measured 2625.94 feet from the N. 1/4 Cor. to the C. 1/4 Cor. of Sec. 27.

Newaygo Engineering and Survey Co. June 16, 1977

Found 1/2" Angle Iron

12" Ash S58°E 47.79' #6

14"-16" Tw. R. Oak N85°E 90.33' #7

30" Maple S76°W 59.08' #8

Measured 2628.52 feet from the N. 1/4 Cor. to the N.E. Cor. of Sec. 27 and measured 2669.02 feet from the N. 1/4 Cor. to the N.E. Cor. of Sec. 27.

William Fries Jr. R.L.S. #30389

March 17, 1989 L.C.R.C. #899

Found 1" Angle Iron

14" W. Oak AZ 65° 69.80' #9

14" Ash AZ 116° 45.97' #6

Nail with Tag AZ 185° 80.00' #10

Nail with Tag AZ 185° 130.00' #11

36" Maple AZ 248° 56.79' #8