

SURVEY & REMONUMENTATION

APR 24 1995 1994 NEWAYGO COUNTY REMONUMENTATION PROJECT

COMMISSION

LAND CORNER RECORDATION CERTIFICATE
Filing Requirement of Act 74, Mich. P.A. 1970

VOL 001 PAGE 109

For corners in
Newaygo

(County)

Located In:

Corner Code #

1. Public Land Survey	T	13N	R	12W	K-12
	T		R		
	T		R		
	T		R		
2. Property Controlling in Section	S		T	R	
	S		T	R	
3. Miscellaneous Property in Sec.	S		T	R	
	S		T	R	

NEWAYGO COUNTY
REGISTER OF DEEDS
MARLENE TOOGOOD

'95 MAR 14 PM 3 56

Register of Deeds Stamp & File Number

- 4. Lot No. _____, Recorded Plat _____
- 5. Private Claims _____

I, Norman L. Ochs, in a field survey on December 9, 19 94

do hereby certify that under requirements of P.A. 74, Michigan P.A. of 1970, the corner points mentioned in lines 1 and 2 above were in conformance with regulations and rules therefore as required in the current manual of survey instructions of the United States Department of the Interior, Bureau of Land Management or by a decree of a Court of Law and/or that the corner points mentioned in lines 3, 4 and 5 above were in conformance with the rules of the Michigan Board of Land Surveyors or by a Decree of a Court of Law; established, re-established, monumented, re-monumented, recovered, found as expressed below:

NOTE: Not more than 4 corners, all in the same town and range, may be recorded on this certificate.

- W. 1/4 Corner, Section 36, Everett Twp., Newaygo Co., MI
- A. Description of original monument and accessories and/or subsequent restoration:

G.L.O. J.H. Mullett 1837
6" W. Oak N66°W 28 lks. (18.48') #1
6" B. Oak S72°E 53 lks. (34.98') #2

OVER----->

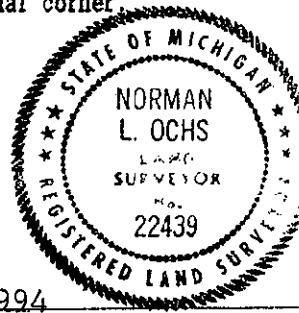
W.S. Merrill (County Surveyor) Book A Pages 55, 56 and 62 March 10, 1882
6" W. Oak N10°W 10 1/2 lks. (6.93') #3 8" W. Oak S59°E 37 lks. (24.42') #4
Measured 39.89 ch. (2632.74 feet) from the S.W. Cor. to the W. 1/4 Cor. of Sec. 36 and measured 39.89 ch. (2632.74 feet) from the W. 1/4 Cor. to the N.W. Cor. of Sec. 36 and measured 40.10 ch. (2646.60 feet) from the E. 1/4 Cor. to the C. 1/4 Cor. of Sec. 35.

- B. Description of corner evidence found and/or method applied in restoring or reestablishing corner:

Found Harrison Cast Iron Monument 6.5 feet East of centerline of North and South Road on old fence line running East and West, on line between N.W. and S.W. Corners and measured 2642.3 feet from the W. 1/4 Cor. to the N.W. Cor. and measured 2630.5 feet from the W. 1/4 Cor. to the S.W. Cor. of Sec. 36. Also found a 1/2" iron 7.9 feet Northwesterly from Harrison Monument in centerline of North and South road, evidently set by G. Nederveld in 1984. The statement in L.C.R.C. No. 1158 by myself, about setting a 1/2" pipe 1/2 way and on line was said in error. Evidently that was going to be used if no fences were found. The roadway on this side of the section is very crooked. I felt that the best place to set the corner was on the true section line for that reason. The condition of recorded witnesses are: #1 thru #4 Gone, #5 thru #7 good condition, #8 thru #11 are witnesses to the 1/2" iron, #12 good condition. I felt that the Harrison Monument is the correct position for this corner and in fact was already in place when G. Nederveld set his 1/2" iron. Therefore I accepted the position of the Harrison Monument for the 1/4 Corner.

- C. Description of monument for corner and accessories established to perpetuate locating the position of the corner:

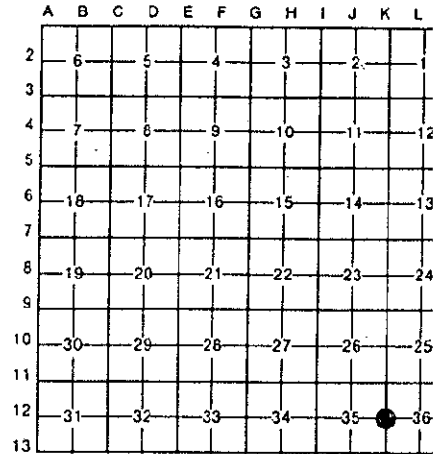
Accepted 4" Harrison Cast Iron Monument 20" long marked "County Surveyor" as a substantial marker for the section corner and is accepted as a careful and faithful reestablishment of the position of the original corner.
15" Maple S20°W 69.24' Spike in N.W. side of tree #5
18" W. Oak N50°E 35.00' Spike in South side of tree #6
12"-12" Tw. W. Oak N20°E 131.89' Spike in N.W. side of tree #7
24" B. Oak (Deadwood in middle of tree) 87.57' Spike in West side of tree #12



Signed by Norman L. Ochs
Norman L. Ochs
Surveyor's Michigan License No. #22439

Date December 10, 1994

Approved by Peer Review Group on December 15, 1994
Norman L. Ochs, County Representative.



A. Description.....(Continued)

Ralph A. Smith R.L.S. #3421

Field Book 70A, Page 58 and 59

Did a survey in the N.W. 1/4 of Sec. 36. He did not find or set the 1/4 Cor. He found a wood stake and 3/4" Gas Pipe at the North 1/8 Cor. on West Section line of Sec. 36 at a distance of 1324.40 feet South of the N.W. Cor. of said section.

Newaygo Engineering and Survey Co. May 9, 1979

Set 1/2" Pipe Half way and on line. Dug and found nothing. Found Old Corner fence post West, dug 25 and 33 feet East of fence corner between the N.E. Cor. and the S.E. Cor. of Sec. 35.

15" Maple S20°W 69.24' #5

18" W. Oak N50°E 35.00' #6

12"-12" Tw. W. Oak N20°E 131.89' #7

Centerline of road is 3 feet West #8

Gordon D. Nederveld R.L.S. #21272 December 19, 1984

Set 1/2" Iron at 2630.28 feet North of the S.W. Cor. of Sec. 36 in the centerline of road.

See survey No. 842265

May 21, 1992 William Fries J.R. P.S. #30389

L.C.R.C. 1149

Found 1/2" Iron in occupied centerline of North and South Roads

22" W. Oak AZ62° 41.41' #9

16" W. Oak AZ84° 53.72' #10

18" Maple AZ205° 65.88' #11

1/2" Iron #21272 AZ269° 32.94' #12

Wayne R. Griffin, P.S. No. 35993 Approx. 1993

Did a survey in the S.E. 1/4 of the S.E. 1/4 of Sec. 35 and used the Harrison Cast Iron Monument for the 1/4 Cor. He measured 2630.53 feet from the E. 1/4 Cor. to the S.E. Cor. and measured 2642.31 feet from the E. 1/4 Cor. to the N.E. Cor. of Sec. 35.

Newaygo Engineering and Survey Co.

February 6, 1993 L.C.R.C. 1158

Removed 1/2" Pipe and set a 4" dia. Harrison Cast Iron Monument by using 1979 witnesses.

15" Maple S20°W 69.24' #5

18" W. Oak N50°E 35.00' #6

12"-12" Tw. W. Oak N20°E 131.89' #7

24" B. Oak (Deadwood in middle of tree) 87.57' #13

Randal D. Feenstra, P.S. #37275

Did a survey of the S.E. 1/4 of the N.E. 1/4 of Sec. 35 and used the Harrison Cast Iron Monument and measured 2629.93 feet from the E. 1/4 Cor. to the S.E. Cor. and measured 2642.32 feet from the E. 1/4 Cor. to the S.E. Cor. of Sec. 35.