

1994 NEWAYGO COUNTY REMONUMENTATION PROJECT

LAND CORNER RECORDATION CERTIFICATE

Filing Requirement of Act 74, Mich. P.A. 1970

VOL 001 PAGE 113

For corners in

Newaygo  
(County)

Located In:

Corner Code --#

- |                                       |                           |       |
|---------------------------------------|---------------------------|-------|
| 1. Public Land Survey                 | T <u>13N</u> R <u>13W</u> | C-5   |
|                                       | T _____ R _____           | _____ |
|                                       | T _____ R _____           | _____ |
|                                       | T _____ R _____           | _____ |
| 2. Property Controlling<br>in Section | S _____ T _____ R _____   | _____ |
|                                       | S _____ T _____ R _____   | _____ |
| 3. Miscellaneous<br>Property in Sec.  | S _____ T _____ R _____   | _____ |
|                                       | S _____ T _____ R _____   | _____ |
| 4. Lot No. _____, Recorded Plat _____ |                           |       |
| 5. Private Claims _____               |                           |       |

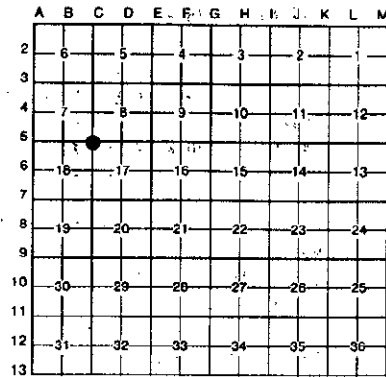
NEWAYGO COUNTY  
REGISTER OF DEEDS  
MARLENE TOOGOOD

'95 MAR 14 PM 3 56

*Marlene Toogood*  
Register of Deeds Stamp & File Number

Norman L. Ochs

I, Norman L. Ochs, in a field survey on May 16, 19 94, do hereby certify that under requirements of P.A. 74, Michigan P.A. of 1970, the corner points mentioned in lines 1 and 2 above were in conformance with regulations and rules therefore as required in the current manual of survey instructions of the United States Department of the Interior, Bureau of Land Management or by a decree of a Court of Law and/or that the corner points mentioned in lines 3, 4 and 5 above were in conformance with the rules of the Michigan Board of Land Surveyors or by a Decree of a Court of Law; established, re-established, monumented, re-monumented, recovered, found as expressed below:



NOTE: Not more than 4 corners, all in the same town and range, may be recorded on this certificate.

N.E. Corner, Section 18, Sherman Twp., Newaygo Co., MI

A. Description of original monument and accessories and/or subsequent restoration:

G.L.O. John Mullett 1838  
8" Beech N32°W 9 lks. (5.94') #1  
8" Beech S40°W 19 lks. (12.54') #2

William M. Jaques (Co. Surveyor)  
Book 10 Page 48 May 31, 1904  
Measured 38 chains, 30 3/4 feet (2538.75 feet) from the N. 1/4 Cor. to the NW.  
Cor. of Sec. 18.

OVER----->

Delos G. Anderson (Co. Surveyor)  
Book A Page 149 1895  
Measured 39.58 chains (2612.28 feet) from the NE. Corner to the N. 1/4 Cor. of Sec. 18. Measured 40.17 chains (2651.22 feet) from the N.E. Cor. to the E. 1/4 Cor. of Sec. 18.

Lyle S. Shepherd R.L.S. #503 1943  
Witness Book No. 2 Page 22 Iron Rod and Glass  
14" Maple S50°W 54.10' #3  
18" Maple S25°W 51.70' #4

B. Description of corner evidence found and/or method applied in restoring or reestablishing corner:

Found 18"x 1 1/4" Drift Pin or Freeze Pin. Also found 1" Iron Pipe Below pin, 1 foot West of centerline of Crosswell Road. I measured 259.93 feet from the N. 1/4 Corner to the NE. Corner of Section 18 and Condition of recorded witnesses are: #1 Thru #3 Gone, #4 Thru #7 Good Condition, #8 Gone, #9 Good Condition.

C. Description of monument for corner and accessories established to perpetuate locating the position of the corner:

Removed 1 1/4" Drift Pin and set a 4" dia. Harrison Cast Iron Monument 20" Long marked "County Surveyor" as a substantial marker for the section corner and is accepted as a careful and faithful reestablishment of the original corner.

- 20" Maple S60°W 54.08' Spike in North side of tree #3
- 22" Maple S30°W 51.59' Spike in face of tree #4
- 15" Maple N60°E 67.52' Spike in S.E. side of tree #7
- 36" Maple N25°W 72.71' Spike in face of tree #9
- 36" Maple N25°W 74.00' Spike in S.W. side of tree #9



Signed by Norman L. Ochs  
Surveyor's Michigan License No. #22439

Date November 22, 1994

Approved by Peer Review Group on November 22, 1994  
Norman L. Ochs, County Representative. *N.L.O.*

FORM APPROVED BY MICHIGAN STATE BOARD OF LAND SURVEYORS, JAN. 28, 1971  
REVISED MAY 14, 1975  
REVISED JAN. 1983

SURVEY &  
REMONUMENTATION

JEC 07 2000

SECTION

A. Description..... (Continued)

M.C.R.C. Sheet

3/4" Iron

14" Maple S50°W 54.10' #3

18" Maple S25°W 51.70' #4

Measured 2650.98 feet from the NE. Cor. to the E. 1/4 Cor. of Sec. 18 and measured 2642.58 feet from the NW. Cor. to the N. 1/4 Cor. of Sec. 17.

Patrick A. Salisbury R.L.S. #13594

March 6, 1968

18" Maple S30°W 73.43' #5

12" Apple N75°E 51.90' #6

Patrick A. Salisbury R.L.S. #13594

July 1968 (Section Break for Consumers Power Co.F.B. #1136)

Drawing No. 17051 Found 1 1/4" Iron Rod

14" Maple S50°W 54.10' #3

18" Maple S25°W 51.70' #4

18" Maple S30°W 73.45' #5

12" Apple N75°E 51.90' #6

Measured 2606.13 feet from the SE. Corner to the S. 1/4 Corner of Section 7. Measured 2623.80 feet from the SE. Corner to the E. 1/4 Corner of Section 7, and measured 2651.62 feet from the NE. Corner to the E. 1/4 Corner of Section 18.

Newaygo Engineering and Survey Co.

Found 1 1/4" Rod January 3, 1980

14" Maple S50°W 54.0' #3

18" Maple S25°W 51.70' #4

12" Apple N75°E 51.90' #6

Measured 2623.13 feet from the SE. Corner to the E. 1/4 Corner of Section 7.

Newaygo Engineering and Survey Co.

Found 1 1/4" Rod April 2, 1984

18" Maple S30°W 73.45' #5

12" Apple N75°E 51.90' #6

Measured 2636.00 feet from the SW. Corner to the S. 1/4 Corner of Section 8.

William Fries Jr. R.L.S. #30389

May 24, 1986 L.C.R.C. #723

Found 1 1/4" Iron

10" Maple AZ63° 67.31' #7

18" Maple AZ223° 40.98' #8

24" Maple AZ244° 54.13' #3

36" Maple AZ336° 74.01' #9

SURVEY &  
REMONUMENTATION

JEC 07 2000

SECTION