

SURVEY & REMONUMENTATION

MAY 28 1997

COMMISSION

1996 Newaygo County Remonumentation Project

**LAND CORNER RECORDATION CERTIFICATE
FILING REQUIREMENT of Act 74, Mich. P.A. 1970**

NEWAYGO COUNTY
REGISTER OF DEEDS
LINDA M. BROWN

'97 FEB 12 PM 4 45

Linda M. Brown

For corners in Newaygo (County) Located in: Corner Code #

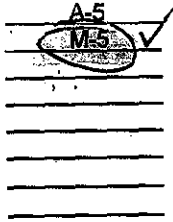
1. Public Land Survey T 13N R 12W
T 13N R 13W
T _____ R _____
T _____ R _____

2. Property Controlling in Section S _____ T _____ R _____
S _____ T _____ R _____

3. Miscellaneous Property in Sec. S _____ T _____ R _____
S _____ T _____ R _____

4. Lot No. _____, Recorded Plat _____

5. Private Claims _____



VOL. 1 PAGE 241

Register of Deeds Stamp & File Number

	A	B	C	D	E	F	G	H	I	J	K	L	M
2													
3													
4													
5													
6													
7													
8													
9													
10													
11													
12													
13													

I, Norman L. Ochs, in a field survey on December 17, 1996, do hereby certify that under requirements of P. A. 74, Michigan P.A. of 1970, the corner points mentioned in lines 1 and 2 above were in conformance with regulations and rules therefore as required in the current manual of survey instructions of the United States Department of the Interior, Bureau of Land Management or by a decree of a Court of Law and/or that the corner points mentioned in lines 3, 4 and 5 above were in conformance with the rules of the Michigan Board of Land Surveyors or by a Decree of a Court of Law; established, re-established, monumented, re-monumented, recovered, found as expressed below:

Note: Not more than 4 corners, all in the same town and range, may be recorded on this certificate.

Southwest Corner, Section 7, Everett Township, Newaygo County, Michigan
Southeast Corner, Section 12, Sherman Township, Newaygo County, Michigan

A. DESCRIPTION OF ORIGINAL MONUMENT AND ACCESSORIES AND/OR SUBSEQUENT RESTORATION:

- G.L.O. John H. Mullett 1837.
12" Hemlock N76°E 18 Links (11.88') #1
12" Hemlock S44°E 36 Links (23.76') #2
- Lyle S. Shepherd R.L.S. #503
Witness Book Number 2 Page 32
4" Oak S40°±E 63.5' #3
Ash West 24.7' #4
- Patrick A. Salisbury R.L.S. #13594
March 20, 1972 Set 1/2" rod by old witnesses
6' West of centerline road to North
36" White Pine N78°30'E 172.70' #5
4"-8" White Oak S32°E 65.46' #3
12" White Oak S20°W 34.17' #6
- Newaygo Engineering and Survey Company
LCRC # 1161 December 5, 1992
Found 3/4" Iron Pipe by using 1972 witnesses. Removed and set 4" diameter Harrison cast iron monument
10" Red Pine N53°W 26.67' #7
18" White Oak S11°W 33.98' #6
Clump of 4 12" White Oak S32°E 65.39' #3
Clump of 4 ± 6" to 18" Maple S75°E 88.62' #8

B. DESCRIPTION OF CORNER EVIDENCE FOUND AND/OR METHOD APPLIED IN RESTORING OR REESTABLISHING CORNER:

Found 4" diameter Harrison cast iron monument and the centerline of the North and South dirt road is 5 feet East and the centerline of the East and West trail road is 6 feet North and the condition of the recorded witnesses are: #1 thru #3 gone, #4 thru #8 good condition.

C. DESCRIPTION OF MONUMENT FOR CORNER AND ACCESSORIES ESTABLISHED TO PERPETUATE LOCATING THE POSITION OF THE CORNER:

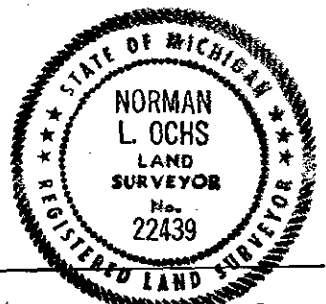
Accepted 4" diameter Harrison cast iron monument 36" long marked "County Surveyor" as a substantial marker for the section corner and is accepted as a careful and faithful reestablishment of the original corner.

- 4"-6" Twin Ash West 24.7' to face of tree. #4
- 36" White Pine (dead) N82°E 172.70' Found spike in North side of tree. #5
- 22" White Oak S25°W 33.98' Found spike in West side of tree. #6
- 12" Red Pine N50°W 26.61' Found spike with tag #22439 in Southwest side of tree. #7
- 6"-6"-12"-22" Quadruple Maple S72°E 88.62' Found spike in Southerly side of tree. #8
- 12"-20"-12"-20" Quadruple White Oak S26°E 65.42' Found spike in Northeast side of tree.

Signed by Norman L. Ochs Date December 20, 1996
Norman L. Ochs

Surveyor's Michigan License No. 22439

Approved by Peer Review Group On December 23, 1996
Norman L. Ochs, County Representative.



Form approved by Michigan State Board of Land Surveyors, Jan 28, 1971
Revised May 14, 1975
Revised Jan., 1983

N.L.O.