

**SURVEY &
REMONUMENTATION**

APR 24 1995 1994 NEWAYGO COUNTY REMONUMENTATION PROJECT

COMMISSION

LAND CORNER RECORDATION CERTIFICATE

Filing Requirement of Act 74, Mich. P.A. 1970

VOL 001 PAGE 115

For corners in
Newaygo
(County)

Located In: Corner Code #

1. Public Land Survey	T	13N	R	14W	K-4
	T		R		
	T		R		
	T		R		
2. Property Controlling in Section	S		T	R	
	S		T	R	
3. Miscellaneous Property in Sec.	S		T	R	
	S		T	R	

NEWAYGO COUNTY
REGISTER OF DEEDS
MARLENE TOOGOOD

'95 MAR 14 PM 3 56

Marlene Toogood

Register of Deeds Stamp & File Number

4. Lot No. _____, Recorded Plat _____
5. Private Claims _____

I, Norman L. Ochs, in a field survey on November 10, 1994, do hereby certify that under requirements of P.A. 74, Michigan P.A. of 1970, the corner points mentioned in lines 1 and 2 above were in conformance with regulations and rules therefore as required in the current manual of survey instructions of the United States Department of the Interior, Bureau of Land Management or by a decree of a Court of Law and/or that the corner points mentioned in lines 3, 4 and 5 above were in conformance with the rules of the Michigan Board of Land Surveyors or by a Decree of a Court of Law; established, re-established, monumented, re-monumented, recovered, found as expressed below:

NOTE: Not more than 4 corners, all in the same town and range, may be recorded on this certificate.

W. 1/4 Corner, Section 12, Dayton Twp., Newaygo County, MI₁₃

A. Description of original monument and accessories and/or subsequent restoration:

G.L.O. John Mullett 1838
15" B. Ash S46°E 9 lks. (5.94') #1
15" B. Ash N76°W 9 lks. (5.94') #2

J.C. Brewster (Co. Surveyor) Nov. 10, 1892
Book A Page 121 Cedar Stake

Measured 39.74 ch. (2622.84 feet) from the N.W. Cor. to the W. 1/4 Cor. of Sec. 12. Measured 39.86 ch. (2630.76 feet) from the W. 1/4 Cor. to the C. 1/4 Cor. of Sec. 12. Measured 39.60 1/2 ch. (2613.93 feet) from the W. 1/4 Cor. to the S.W. Cor. of Sec. 12 and measured 5236.77 feet for the mile.

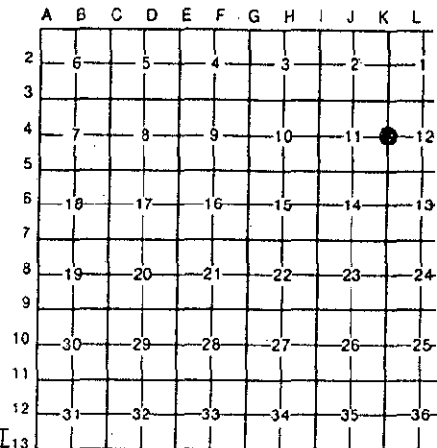
B. Description of corner evidence found and/or method applied in restoring or reestablishing corner:

Found a 1 1/4" Iron Pipe as set by Patrick A. Salisbury R.L.S. #13594 and I measured 5237.54 feet for the mile After review of J.C. Brewster's W. 1/4 Cor. to distances from N.W. Cor. to W. 1/4 Cor. and S.W. Cor. of Sec. 18, I decided that Pat Salisbury set the corner in error. I prorated our mile distance to J. C. Brewsters distances and reset the corner by that method on a straight line and condition of recorded witnesses are: #1 and #2 Gone, #3 Good Condition, #4 Found Dead, #5 Poor Condition. Also dug and found nothing, area is a swamp on East and West sides of road and 2 to 3 feet of fill for roadway.

C. Description of monument for corner and accessories established to perpetuate locating the position of the corner:

Removed 1 1/4" Iron Pipe and set a 4" dia. Harrison Cast Iron Monument 20" long marked "County Surveyor" as a substantial marker for the section corner and is accepted as a careful and faithful reestablishment of the original corner.

6" Tw. Maple (Dying) S85°W 34.77' Spike on North side of tree #3
7" Elm S20°E 56.62' Spike in S.W. side of tree
5" B. Ash N40°W 59.30' Spike in N.W. side of tree
4" Maple N40°E 46.10' Spike on Westerly side of tree
Pipe Fence Corner N85°W 37.35' to face



OVER----->



Signed by Norman L. Ochs
Surveyor's Michigan License No. #22439

Date November 21, 1994

Approved by Peer Review Group on November 22, 1994
Norman L. Ochs, County Representative. *N.L.O.*

A. Description.....(Continued)

Patrick A. Salisbury R.L.S. #13594

Sept. 11, 1972 Set 1 1/4" Pipe halfway and on line between N.E. and S.E. Corners of Sec. 18.

5"-3" Tw. Maple S85°W 35.35' #3

15" Ash S45°E 77.47' #4

3"-12" Willow N30°E 39.84' #5

Measured 2618.87 feet from the W. 1/4 Cor. to the N.W. Cor. of Sec. 12. Measured 2618.86 feet from the W. 1/4 Cor. to the S.W. Cor. of Sec. 12.