

LAND CORNER RECORDATION CERTIFICATE Filing Requirement of Act 74, Mich. P.A. 1970

94 JAN 21 PM 3 27

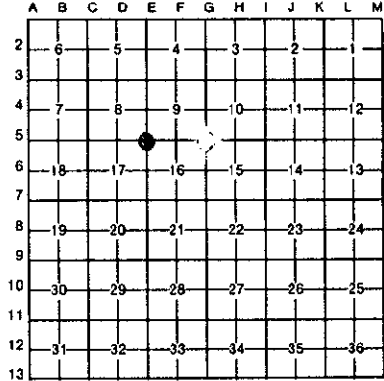
Marlene Toogood

VOL 001 PAGE 39

Register of Deeds Stamp & File Number

For corners in

Table with columns: NEWAYGO (County), Located in:, Corner Code #. Rows include Public Land Survey, Property Controlling in Section, Miscellaneous Property in Sec., Lot No., and Private Claims.



I, Norman L. Ochs, in a field survey on December 4, 1993, do hereby certify that under requirements of P.A. 74, Michigan P.A. of 1970, the corner points mentioned in lines 1 and 2 above were in conformance with regulations and rules therefore as required in the current manual of survey instructions of the United States Department of the Interior, Bureau of Land Management or by a decree of a Court of Law and/or that the corner points mentioned in lines 3, 4 and 5 above were in conformance with the rules of the Michigan Board of Land Surveyors or by a Decree of a Court of Law; established, re-established, monumented, re-monumented, recovered, found as expressed below:

NOTE: Not more than 4 corners, all in the same town and range, may be recorded on this certificate.

NW Cor., Sec. 16, Lincoln Twp.

- A. Description of original monument and accessories and/or subsequent restoration: E-5 (Sec. Cor., Sec's 8, 9, 16 & 17, NW Cor., Sec. 16, T14N, R13W) G.L.O. Milton Nye 1856 3-13-80 New. Eng. & Sur Co. 8-3-89 Wm. Fries, Jr. 22" W. Pine N64°E 13 lks #1 3/4" rod raised w/2" Pipe 2" Pipe (See LCRC#950) 12" Beech S76°W 39 lks #2 P Pole S20°+W 83.26' #4 Nail & plastic washer 24" Ash N80°E 184.63' #3 AZ 50° 50.00' #6 5" J. Pine S20°+E 138.28' #5 Nail & Plastic washer AZ 197° 83.24' #4 NCRC Sheet Iron 3-31-86 N.E. & S Co. P.Pole WC439150 AZ197° 24" Ash N80°E 184.00' #3 3/4" rod raised w/1-1/4" pipe 83.24' #4 P.Pole S17°W 82.86' #4 24" Ash N75°E 184.86' #3 2-1/2" OD Pipe AZ 330° P.Pole S30°W 83.22' #4 44.51' #8

B. Description of corner evidence found and/or method applied in restoring or reestablishing corner: Located 2" pipe that Wm. Fries, Jr. located in 1989. Set 4" Harrison Cast Iron Monument and fit well with the remaining witnesses. Honored for the Section corner NOTE: 1903 Field Book 10, Pg. 15 thru 17 indicates Wm. Jacques had this corner & it fits our distances to W-1/4 of Sec. 16 of 2498.85. Jacques had 2500.00.

Condition of recorded witnesses: #1 gone, #2 gone, #3 good condition, #4 good condition, #5 good condition, #6 gone, #7 gone, #8 gone.

C. Description of monument for corner and accessories established to perpetuate locating the position of the corner: Accepted 4" cast Iron Harrison Monument as a substantial marker for the Section corner and is accepted as a careful and faithful re-establishment of the position of the original corner.

- P. Pole S21°W 83.23' Fd. nail in W side of Pole #4. 24" Ash N75°E 184.90' Fd. nail in S sd. of tree #3. 5" Pine S22°E 129.60' Nail in SE side of tree #5. Stop Sign N09°W 48.58' Center of post.



Signed by Norman L. Ochs Date December 20, 1993 Surveyor's Michigan License No. 22439

FORM APPROVED BY MICHIGAN STATE BOARD OF LAND SURVEYORS, JAN. 26, 1971 REVISED MAY 14, 1975 REVISED JAN., 1983

Approved by Peer Review Group December 27, 1993 Norman L. Ochs, County Representative

SURVEY & REMONUMENTATION

JEC 07 2000

SECTION