

LAND CORNER RECORDATION CERTIFICATE 94 JAN 21 PM 3 27
Filing Requirement of Act 74, Mich. P.A. 1970

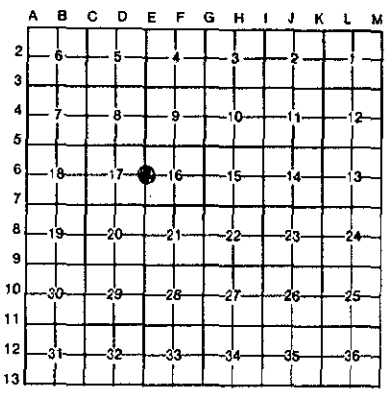
Marlene Toogood

VOL 001 PAGE 40

For corners in	Located In:	Corner Code #
NEWAYGO (County)		
1. Public Land Survey	T <u>14</u> R <u>13W</u>	<u>E-6</u>
	T _____ R _____	_____
	T _____ R _____	_____
	T _____ R _____	_____
2. Property Controlling in Section	S _____ T _____ R _____	_____
	S _____ T _____ R _____	_____
3. Miscellaneous Property in Sec.	S _____ T _____ R _____	_____
	S _____ T _____ R _____	_____

Register of Deeds Stamp & File Number

4. Lot No. _____, Recorded Plat _____
5. Private Claims _____



I, Norman L. Ochs, in a field survey on December 4, 19 93, do hereby certify that under requirements of P.A. 74, Michigan P.A. of 1970, the corner points mentioned in lines 1 and 2 above were in conformance with regulations and rules therefore as required in the current manual of survey instructions of the United States Department of the Interior, Bureau of Land Management or by a decree of a Court of Law and/or that the corner points mentioned in lines 3, 4 and 5 above were in conformance with the rules of the Michigan Board of Land Surveyors or by a Decree of a Court of Law; established, re-established, monumented, re-monumented, recovered, found as expressed below:

NOTE: Not more than 4 corners, all in the same town and range, may be recorded on this certificate.

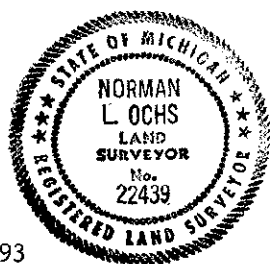
W-1/4 Corner, Sec. 16, Lincoln Twp.

A. Description of original monument and accessories and/or subsequent restoration:
E-6 (1/4 Corner, Sec.'s 16 & 17, W-1/4 Cor., Sec. 16, T14N, R13W.
G.L.O. Milton Nye 1856 3-13-80 New Eng & Sur Co. 1990 Wm. Fries, Jr.
6" Hemlock Corner Tree Fnd. 1-1/2" Pipe Fnd. 1/2" iron
4" Hemlock N18°W 11 lks #1 P Pole N75°+W 37.83' #3 12" Oak AZ117° 114.75'#5
10" Beech S75°E 19 lks #2 28" Maple N25°+E76.65' #4 1/2" Iron AZ 203° 95.00'
6" R. Oak S55°+E 113.98' #5 #6
1/2" Iron AZ 267° 32.91' #7
P.Pole AZ 283° 37.83' #3
LCRC #950

B. Description of corner evidence found and/or method applied in restoring or reestablishing corner:
In 1903 Field Book 10 pg's. 15 thru 17 indicates that Wm. Jacques set the E-1/4 from NE cor. to E-1/4 Cor. Measured 37 chains 58 feet (2500 feet) and from the E-1/4 cor. to SE cor. Measured 46 chains 26 feet (3062 feet). No witnesses were given for this 1/4 corner. G.L.O. indicated from NE cor. to E-1/4 cor. measured 39.60 chs (2613.60 feet). In 1980 I measured 2498.85 feet from the NE cor. to the E-1/4 corner and 3060.99 feet from the E-1/4 cor. to the SE cor. In 1989 Wm. Fries Jr. found 1/2" iron. The cor. he found is presumed to perpetuate the original location. I located the 1-1/2" pipe and 1/2" iron located 6' E of the CL of N&S gravel road. I removed the pipe & iron and set a 8" Harrison cast iron monument. The 1/2" Rod was in the 1 1/2" Pipe.

C. Description of monument for corner and accessories established to perpetuate locating the position of the corner:
Accepted 8" Harrison cast iron monument as a substantial marker for the 1/4 corner and is accepted as a careful & faithful re-establishment of the position of original corner.

15" R Oak S62°E 114.80' PK Nail in S sd. of tree #5.
P.Pole S38°W 94.86' Fnd nail in E side of Pole,
P.Pole N70°W 37.98' Fnd nail in S sd of Pole #3.
30" Maple N28°E 76.41' Fnd. nail in W side of tree #4.



Signed by Norman L. Ochs Date December 20, 1993
Surveyor's Michigan License No. 22439

Approved by Peer Group December 27, 1993
Norman L. Ochs, County Representative

FORM APPROVED BY MICHIGAN STATE BOARD OF LAND SURVEYORS, JAN. 28, 1971
REVISED MAY 14, 1975
REVISED JAN., 1983

SURVEY & REMONUMENTATION
DEC 07 2000
SECTION