

SURVEY & REMONUMENTATION

MAY 28 1997

COMMISSION

1996 Newaygo County Remonumentation Project

**LAND CORNER RECORDATION CERTIFICATE
FILING REQUIREMENT of Act 74, Mich. P.A. 1970**

NEWAYGO COUNTY
REGISTER OF DEEDS
LINDA M. BROWN

'97 FEB 12 PM 4 45

Linda M. Brown

For corners in
Newaygo
(County)

Located in: _____ Corner Code # _____

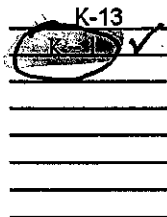
1. Public Land Survey T 16N R 11W
T 15N R 11W
T _____ R _____
T _____ R _____

2. Property Controlling in Section S _____ T _____ R _____
S _____ T _____ R _____

3. Miscellaneous Property in Sec. S _____ T _____ R _____
S _____ T _____ R _____

4. Lot No. _____, Recorded Plat _____

5. Private Claims _____



VOL. 2 PAGE 37

Register of Deeds Stamp & File Number

	A	B	C	D	E	F	G	H	I	J	K	L	M
2	6	5	4	3	2								
3													
4	7	6	5	4	3	2							
5													
6	10	9	8	7	6	5	4	3	2				
7													
8	19	18	17	16	15	14	13	12	11	10	9	8	7
9													
10	30	29	28	27	26	25	24	23	22	21	20	19	18
11													
12	31	30	29	28	27	26	25	24	23	22	21	20	19
13													

I, Norman L. Ochs, in a field survey on December 10, 1996, do hereby certify that under requirements of P. A. 74, Michigan P.A. of 1970, the corner points mentioned in lines 1 and 2 above were in conformance with regulations and rules therefore as required in the current manual of survey instructions of the United States Department of the Interior, Bureau of Land Management or by a decree of a Court of Law and/or that the corner points mentioned in lines 3, 4 and 5 above were in conformance with the rules of the Michigan Board of Land Surveyors or by a Decree of a Court of Law; established, re-established, monumented, re-monumented, recovered, found as expressed below:

Note: Not more than 4 corners, all in the same town and range, may be recorded on this certificate.

Southwest Corner, Section 36, Barton Township, Newaygo County, Michigan
Northwest Corner, Section 1, Norwich Township, Newaygo County, Michigan

A. DESCRIPTION OF ORIGINAL MONUMENT AND ACCESSORIES AND/OR SUBSEQUENT RESTORATION:

G.L.O. John Hodgson 1838
As per G.L.O. field notes for Section 36, Barton Twp.
10" Beech N03°E 17 Links (11.22')#1
12" Beech N32°W 45 Links (29.7')#2
As per G.L.O. field notes for Northwest Corner, Section 1, Norwich Twp.
8" Beech S74°E 34 Links (22.44')#3
10" Beech S06½°W 49 Links (32.34')#4
Measured 39.40 Chains (2600.4') from the Southwest Corner to the West One Quarter Corner of Section 36 and measured 78.96 Chains (5211.36') from the Southwest Corner to the Northwest Corner of Section 36 and measured 40 Chains (2640') from the Southwest Corner to the South One Quarter Corner of Section 36 and measured 80 Chains (5280') from the Southwest Corner to the Southeast Corner of Section 36.

William M. Jacques (County Surveyor)
Book B Page's 36 and 37 and Book 7 Page 13 September 12, 1908
Pine Root with broken glass around
Measured 80.10 Chains (5286.6') from the Northwest Corner to the Northeast Corner of Section 1, T15N R11W and measured 39.98 Chains (2638.68') from the Northwest Corner to the North One Quarter Corner of Section 1, T15N R11W and measured 78.65 Chains (5190.90') from the Northwest Corner to the Southwest Corner of Section 1, T15N R11W and measured 38.55 Chains (2544.3') from the Northwest Corner to the West One Quarter Corner of Section 1, T15N R11W.

B. DESCRIPTION OF CORNER EVIDENCE FOUND AND/OR METHOD APPLIED IN RESTORING OR REESTABLISHING CORNER:

Found nothing. I held fence to the North as West Right-of-Way ± and fence to South as East Right-of-Way ± and found Pine Root 33 feet ± North on extension of fence to South and used Pine Root as centerline of former 12 Mile Road and East Right-of-Way fence extended line 33 feet West to set corner and the centerline of North and South trail road is 113 feet ± East and the centerline of Easterly and Westerly trail road is 36 feet ± North and the centerline of East and West trail road is 30 feet ± South and measured 5259.46 feet from the Southwest Corner to the Southeast Corner of Section 36 and measured 2625.10 feet from the Southwest Corner to the South One Quarter Corner of Section 36 and measured 5244.48 feet from the Southwest Corner to the Northwest Corner of Section 36 and measured 2616.93 feet from the Southwest Corner to the West One Quarter Corner of Section 36 and the condition of the recorded witnesses are: #1 thru #4 gone.

C. DESCRIPTION OF MONUMENT FOR CORNER AND ACCESSORIES ESTABLISHED TO PERPETUATE LOCATING THE POSITION OF THE CORNER:

Set 4" diameter Harrison cast iron monument 36" long marked "County Surveyor" as a substantial marker for the section corner and is accepted as a careful and faithful reestablishment of the original corner.

- 26" White Oak S59°W 38.13' Set spike and tag in Northeast side of tree.
- 14" Red Pine S36°W 22.84' Set spike and tag in Northwest side of tree.
- 12" Red Pine S22°E 17.33' Set spike and tag in East side of tree.
- 14" Red Pine N85°E 19.42' Set spike and tag in North side of tree.

Signed by Norman L. Ochs Date December 11, 1996

Surveyor's Michigan License No. 22439

Form approved by Michigan State Board of Land Surveyors Jan 26 1997
Revised Mar 4 1975
Revised Jan., 1983

Approved by Peer Review Group On December 11, 1996

Norman L. Ochs, County Representative.

