

MAY 28 1997

COMMISSION

1996 Newaygo County Remonumentation Project

NEWAYGO COUNTY  
REGISTER OF DEEDS  
LINDA M. BROWN

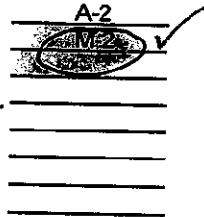
LAND CORNER RECORDATION CERTIFICATE  
FILING REQUIREMENT of Act 74, Mich. P.A. 1970

'97 FEB 12 PM 4 45

*Linda M. Brown*

For corners in  
Newaygo  
(County) Located in: Corner Code #

- 1. Public Land Survey T 15N R 11W  
T 15N R 12W  
T R  
T R
- 2. Property Controlling in Section S T R  
S T R
- 3. Miscellaneous Property in Sec. S T R  
S T R



VOL. 2 PAGE 20

- 4. Lot No. \_\_\_\_\_, Recorded Plat \_\_\_\_\_
- 5. Private Claims \_\_\_\_\_

Register of Deeds Stamp & File Number

	A	B	C	D	E	F	G	H	I	J	K	L	M
2	6	5	4	3	2	1							
3													
4	7	8	9	10	11	12							
5													
6	10	17	16	15	14	13							
7													
8	19	20	21	22	23	24							
9													
10	30	29	28	27	26	25							
11													
12	31	32	33	34	35	36							
13													

I, Norman L. Ochs, in a field survey on May 17, 1996, do hereby certify that under requirements of P. A. 74, Michigan P.A. of 1970, the corner points mentioned in lines 1 and 2 above were in conformance with regulations and rules therefore as required in the current manual of survey instructions of the United States Department of the Interior, Bureau of Land Management or by a decree of a Court of Law and/or that the corner points mentioned in lines 3, 4 and 5 above were in conformance with the rules of the Michigan Board of Land Surveyors or by a Decree of a Court of Law, established, re-established, monumented, re-monumented, recovered, found as expressed below:

Note: Not more than 4 corners, all in the same town and range, may be recorded on this certificate.

West One Quarter Corner, Section 6, Norwich Township, Newaygo County, Michigan  
East One Quarter Corner, Section 1, Monroe Township, Newaygo County, Michigan

A. DESCRIPTION OF ORIGINAL MONUMENT AND ACCESSORIES AND/OR SUBSEQUENT RESTORATION:

G.L.O. John Hodgson 1838  
15" Black Ash S70°W 4 Links (2.64')#1  
14" Black Ash N55°W 40 Links (26.4')#2

Delos G. Andreson (County Surveyor)  
Book A Page 231 County Surveyor's Records 1898  
Ran East and West One Quarter Line, Section 6, Recorded distances of 2376.0' to Center One Quarter Corner and 5036.46 to East One Quarter Corner, "old corner found new stake". Reported distance of 2608.98 to Northwest Corner of Section 6

Lyle S. Shepherd R.L.S. #503 1916  
Established One Quarter Post, Old one pulled out, old one set by Anderson 17 years previous  
10" White Pine N02½°E 240.5' #3

B. DESCRIPTION OF CORNER EVIDENCE FOUND AND/OR METHOD APPLIED IN RESTORING OR REESTABLISHING CORNER:

I did not find any monument at this location or any of the accessories 1 thru 3 stated above. I found a straight fence line running East for a mile and a fence line running West. I set the corner on line between the Northwest and Southwest Section Corners in line with fences East and West. I measured the following distances: 2608.02 feet to the Northwest Corner, Section 6, 2631.79 feet to Southwest Corner Section 6, 5016.70 to East One Quarter Corner, Section 6, Corner falls in centerline of North and South gravel roads.

C. DESCRIPTION OF MONUMENT FOR CORNER AND ACCESSORIES ESTABLISHED TO PERPETUATE LOCATING THE POSITION OF THE CORNER:

I set a 4" diameter Harrison cast iron monument 20" long marked "County Surveyor" as a substantial marker for the section corner and is accepted as a careful and faithful reestablishment of the original corner.

- 15" diameter Concrete Fence Post N85°W 30.45' Bolt on North side of base.
- 15" diameter Concrete Fence Post S62°W 34.65' P.K. nail in center, top.
- 5" Elm S25°W 87.69' Spike in East side of tree.
- Top of Bolt in West side of Northwest Tower Leg S09°E 173.55'

Signed by Norman L. Ochs Date September 12, 1996

Surveyor's Michigan License No. 22439

Form approved by Michigan State Board of Land Surveyors, Jan 28, 1971

Revised May 14, 1975

Revised Jan., 1983

Approved by Peer Review Group On October 24, 1996  
Norman L. Ochs, County Representative.

*M.L.O.*

