

1995 Newaygo County Remonumentation Project

LAND CORNER RECORDATION CERTIFICATE
FILING REQUIREMENT of Act 74, Mich. P.A. 1970

VOL. 1 PAGE 136
NEWAYGO COUNTY
MAR 1 1995

For corners in
Newaygo
(County)

Located in: _____ Corner Code # _____

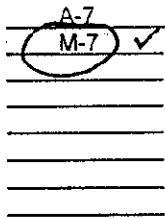
1. Public Land Survey T 15N R 12W
T 15N R 13W
T _____ R _____
T _____ R _____

2. Property Controlling S _____ T _____ R _____
in Section S _____ T _____ R _____

3. Miscellaneous S _____ T _____ R _____
Property in Sec. S _____ T _____ R _____

4. Lot No. _____, Recorded Plat _____

5. Private Claims _____



95 FEB 21 AM 9 43

Norman L. Ochs

Register of Deeds Stamp & File Number

	A	B	C	D	E	F	G	H	I	J	K	L	M
2	6		5		4		3		2		1		
3													
4	7		8		9		10		11		12		
5													
6	13		17		16		15		14		13		
7													
8	19		20		21		22		23		24		
9													
10	30		29		28		27		26		25		
11													
12	31		32		33		34		35		36		
13													

I, Norman L. Ochs, in a field survey on December 6, 1995, do hereby certify that under requirements of P. A. 74, Michigan P.A. of 1970, the corner points mentioned in lines 1 and 2 above were in conformance with regulations and rules therefore as required in the current manual of survey instructions of the United States Department of the Interior, Bureau of Land Management or by a decree of a Court of Law and/or that the corner points mentioned in lines 3, 4 and 5 above were in conformance with the rules of the Michigan Board of Land Surveyors or by a Decree of a Court of Law; established, re-established, monumented, re-monumented, recovered, found as expressed below:

Note: Not more than 4 corners, all in the same town and range, may be recorded on this certificate.

N.W. Corner, Section 19, Monroe Twp., Newaygo Co., MI
N.E. Corner, Section 24, Merrill Twp., Newaygo Co., MI

A. DESCRIPTION OF ORIGINAL MONUMENT AND ACCESSORIES AND/OR SUBSEQUENT RESTORATION:

G.L.O. John Hodgson 1838
8" Aspen S64°W 42Lks (27.72') #1
8" Aspen N57°W 29Lks (19.14') #2
North edge of swamp is South 1.0 ch (66') #3
South edge of tamarack and spruce swamp is North 2 ch (132') #4

William M. Jacques (Co. Surveyor)
Book 27 Pg. 14 October 30, 1911
Measured 80 ch 79 ft (5359 ft) from the E. ¼ cor of Sec. 13, Merrill Twp., to the E. ¼ Cor. of Sec. 24, Merrill Twp.

William M. Jacques (Co. Surveyor)
Measured 40.10 ch (2646.6 ft) from the N. ¼ Cor. to the N.E. Cor. of Sec. 24, Merrill Twp.

Ralph A. Smith RLS #3421
Book 81C Pg's 50 & 51 May 1952
Well Point
15" Pine N85±°W 18.4' #5
10" R. Oak N45±°W 32.9' #6
Measured 2649.3 ft from the E. ¼ Cor. to the S.E. Cor. of Sec. 13, T15N R13W and measured 2643.5 ft from the S.E. Cor. to the S. ¼ Cor. of Sec. 13, T15N R13W

NCRC Sheet
Well Point
15" Pine N85°W 18.4' #5
10" R. Oak N45°W 32.9' #6
Measured 2649.3 ft from the E. ¼ Cor. to the S.E. Cor. of Sec. 13, T15N R13W

OVER ↘

B. DESCRIPTION OF CORNER EVIDENCE FOUND AND/OR METHOD APPLIED IN RESTORING OR REESTABLISHING CORNER:

Found Robert A Griffin's reinforced conc. mon. w/brass disk and the centerline of the N&S trail road is 2 ft East and the condition of the recorded witnesses are: #1 and #2 gone, #3 thru #11 good condition.

C. DESCRIPTION OF MONUMENT FOR CORNER AND ACCESSORIES ESTABLISHED TO PERPETUATE LOCATING THE POSITION OF THE CORNER:

Accepted R.A.G.'s conc. mon. as a substantial marker for the section corner and is accepted as a careful and faithful reestablishment of the original corner.

North edge of swamp South 126' #3
South edge of Tamarack and Spruce swamp is North 132' #4
28" Tw. W. Pine N80°W 19.06' Spike in South side of tree. #5
26" B. Oak N41°W 33.60' Spike in Northeast side of tree. #6
20" R. Pine N55°E 39.69' Spike in South side of tree. #7
20" Maple S11°E 61.90' Spike in East side of tree. #8
10" B. Oak N26°W 56.09' Spike in West side of tree. #9
4"X7" Pine post East 33.00' Face #10
Centerline of ditch going E&W South 28' #11

Signed by *Norman L. Ochs* Date December 12, 1995
Norman L. Ochs

Surveyor's Michigan License No. 22439

Form approved by Michigan State Board of Land Surveyors, Jan 28, 1971
Revised May 14, 1975
Revised Jan., 1983

Approved by Peer Review Group On December 13, 1995
Norman L. Ochs, County Representative.



N. L. O.

A. Description ... (Continued)

Robert A. Griffin RLS #13584

LCRC #115 July 28, 1967

Found 1/4"x24" well point in old N&S rd., replaced with a 5" sq. reinforced conc. post 3 ft long below the surface with a brass disk on top

Distance check Well #3

Distance check Well #4

6" R. Pine N55°E 39.70' #7

6" Maple S11°E 61.98' #8

19"-20" Tw. W. Pine N80°W 19.06' #5

14" B. Oak N41°W 33.6' #6

4" B. Oak N26°W 56.13' #9

4" Sq. x7' Pine post East 33.00' #10

Newaygo Engineering and Survey Co.

Drawing No. 82073B Sept. 27, 1982

Found R.A.G. mon. also fnd. 1 1/2" pipe on South side of mon.

12" R. Pine N55°E 39.70' #7

9" Maple S11°E 61.98' #8

26" Tw. W. Pine N80°W 19.06' #5

Centerline of 14" B. Oak N41°W 33.60' #6

6" B. Oak N26°W 56.13' #9

Pine post East 33.00' #10

Centerline of ditch going E&W is 28' South of Cor. #11

Centerline of N&S trail road is 2' East of Cor.

Measured 2708.89 ft from the N.W. Cor. to the W. 1/4 Cor. of Sec. 19 and measured 2459.74 ft from the N.W. Cor. to the N. 1/4 Cor. of Sec. 19

Newaygo Engineering and Survey Co.

Sec. 24, T15N R13W, Section break

Measured 2631.41 ft from the N.E. Cor. to the N. 1/4 Cor. of Sec. 24, Merrill Twp.