

MAR 11 1999

LIBER 19350PC880

JA-599001678

SECTION

LAND CORNER RECORDATION CERTIFICATE
Filing Requirement of Act 74, Mich. P.A. 1970

For corners in

<u>Oakland</u> (County)	Located in: Lyon Township	Corner Code #
1. Public Land Survey	T <u>1N</u> R <u>7E</u>	<u>B-3</u>
	T _____ R _____	_____
	T _____ R _____	_____
	T _____ R _____	_____
2. Property Controlling in Section	S _____ T _____ R _____	_____
	S _____ T _____ R _____	_____
3. Miscellaneous Property in Sec.	S _____ T _____ R _____	_____
	S _____ T _____ R _____	_____

\$ 7.00 MISCELLANEOUS RECORDING
 \$ 2.00 REMONUMENTATION
 5 JAN 99 8:25 A.M. RECEIPT# 8A
 PAID RECORDED - OAKLAND COUNTY
 G. WILLIAM CANNELL
 CLERK/REGISTER OF DEEDS
 Compliance with
 ACT 345, P.A. 1990
 APPROVED ON: 12-21-98 JS
 OAKLAND COUNTY REMONUMENTATION
 PEER GROUP COMMITTEE
 Register of Deeds Stamp & File Number

- 4. Lot No. _____, Recorded Plat _____
- 5. Private Claims _____

I, Bruce Antcliff, in a field survey on November 2 19 98, do hereby certify that under requirements of P.A. 74 Michigan P.A. of 1970, the corner points mentioned in lines 1 and 2 above were in conformance with regulations and rules therefore as required in the current manual of survey instructions of the United States Department of the interior, Bureau of Land Management or by a decree of a Court of Law and/or that the corner points mentioned in lines 3, 4 and 5 above were in conformance with the rules of the Michigan Board of Land Surveyors or by a Decree of a Court of Law; established, re-established, monumented, re-monumented, recovered, found as expressed below:

NOTE: Not more than 4 corners, all in the same town and range, may be recorded on this certificate.

A. Description of original monument and accessories and/or subsequent restoration:

B-3	1816	Holmes	G.L.O.	Set Post
	N/A	N/A	O.C. Tax Maps	N/A

B. Description of corner evidence found and/or method applied in restoring or reestablishing corner:

B-3 Found no information on record for this corner. Found an iron pipe on the C/L of Silver Lake Road (bit.) running East and West on line of a tree row running North. The found iron pipe is 15.05' South of a straight line between A-3 and C-3.

Measure East 2636.8' to C-3 (G.L.O. = 2640.0') (O.C. Tax Map = 2636.61')
 Measure West 1537.67' to A-3 (Measure 1543.65' to Town Line) (G.L.O. = 1556.28')

C. Description of monument for corner and accessories established to perpetuate locating the position of the corner:

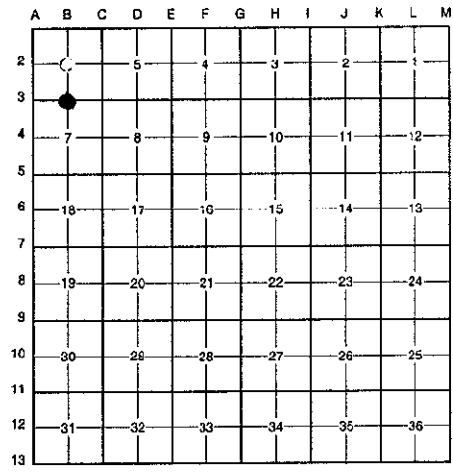
B-3 Replaced iron pipe with a 5/8" x 24" rebar with brass cap stamped "Oakland County Remonumentation P.S. #25826." Also set a new monument box.

- PK Nail & Oakland Co. Remonumentation Tag in W Side 20" Oak N 0° E 27.44'
- PK Nail & Oakland Co. Remonumentation Tag in SW Side Tele. Pole S 50° E 42.76'
- PK Nail & Oakland Co. Remonumentation Tag in SW Side 12" Oak N 45° W 48.13'
- PK Nail & Oakland Co. Remonumentation Tag in SE Side P. Pole S 45° W 254.25'
- PK Nail & Oakland Co. Remonumentation Tag in West Side Tele. Pole S 50° E 42.50'
- PK Nail & Oakland Co. Remonumentation Tag in West Side 20" Oak N 50° W 67.52'

The selected location is accepted by the Contractor and is generally accepted by professional surveyors as the best available evidence of the position of the original corner.

Signed by Bruce Antcliff Date 12-24-98
 EARTH TECH

Surveyor's Michigan License No. 25826



7.00 FILL
2.00

