

MAR 1 1999

LIBER 19296PG537

DE 17 98 3 15 3

SECTION

LAND CORNER RECORDATION CERTIFICATE
Filing Requirement of Act 74, Mich. P.A. 1970

For corners in

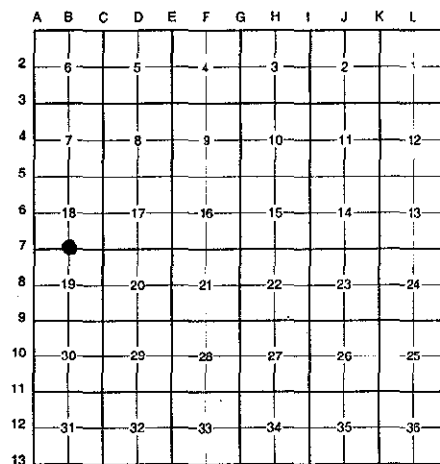
Oakland (County)	Located in: Lyon Township	Corner Code #
1. Public Land Survey	T <u>1N</u> R <u>7E</u>	<u>B-7</u>
	T _____ R _____	_____
	T _____ R _____	_____
	T _____ R _____	_____
2. Property Controlling in Section	S _____ T _____ R _____	_____
	S _____ T _____ R _____	_____
3. Miscellaneous Property in Sec.	S _____ T _____ R _____	_____
	S _____ T _____ R _____	_____

\$ 7.00 MISCELLANEOUS RECORDING
 \$ 2.00 REMONUMENTATION
 17 DEC 98 3:31 P.M. RECEIPT#-518
 PAID RECORDED - OAKLAND COUNTY
 G. WILLIAM CADDELL
 CLERK/REGISTERED DEEDS
 ACT 345, P.A. 1990

APPROVED ON: 11-29-97 JS
 OAKLAND COUNTY REMONUMENTATION
 PEER GROUP COMMITTEE
 Register of Deeds Stamp & File Number

- 4. Lot No. _____, Recorded Plat _____
- 5. Private Claims _____

I, Bruce Antcliff, in a field survey on October 20 19 98, do hereby certify that under requirements of P.A. 74 Michigan P.A. of 1970, the corner points mentioned in lines 1 and 2 above were in conformance with regulations and rules therefore as required in the current manual of survey instructions of the United States Department of the interior, Bureau of Land Management or by a decree of a Court of Law and/or that the corner points mentioned in lines 3, 4 and 5 above were in conformance with the rules of the Michigan Board of Land Surveyors or by a Decree of a Court of Law; established, re-established, monumented, re-monumented, recovered, found as expressed below:



NOTE: Not more than 4 corners, all in the same town and range, may be recorded on this certificate.

A. Description of original monument and accessories and/or subsequent restoration:

B-7	1816	Holmes	G.L.O.	Set Post
	1995	Strater	Trotters Pointe Site Condo Plan #951 L. 15880 P. 728	N/A
	N/A	N/A	O.C. Tax Maps	N/A

B. Description of corner evidence found and/or method applied in restoring or reestablishing corner:

B-7 Found pole barn spike in the C/L of 11 Mile Road (gravel) running East and West with no occupation North or South. Found Progressive iron at the Southwest corner of Unit #6, the Southeast corner of Unit #1 and the Southwest corner of Unit #2 per utility plan of Trotters Pointe Site Condo Plan #951 L. 15880 P. 728. Using corners found, extend West line of Trotters Pointe Site Condo South to the South line of Section. Meas. East 328.3' to found spike Rec. = 327.47' .83' ±; Meas. to C-7 = 2640.0' Rec. = 2640.14 -0.14'. Accepted found spike as corner.

Measure East 2640.0' to C-7 (G.L.O. = 2640.0') (Trotters Pointe Sub. = 2640.14')
 Measure West 1508.9' to A-7 (G.L.O. = 1512.06')

C. Description of monument for corner and accessories established to perpetuate locating the position of the corner:

B-7 Replaced pole barn spike with a 5/8" x 24" rebar with brass cap stamped "Oakland County Remonumentation P.S. #25826."

- PK Nail & Oakland Co. Remonumentation Tag in NE Face 20" Oak S 57° E 37.61'
- PK Nail & Oakland Co. Remonumentation Tag in NW Face 10" Oak S 65° W 41.05'
- PK Nail & Oakland Co. Remonumentation Tag in SE Cor. Conc. Fnd. Hse. #1183 Colt N 52° W 161.16'
- "X" Cut SW Cor. Conc. Transformer Pad N 2° E 40.64'
- Nail SW Cor. Conc. Transformer Pad N 2° E 40.89'

The selected location is accepted by the Contractor and is generally accepted by professional surveyors as the best available evidence of the position of the original corner.

Signed by Bruce Antcliff Date 12-10-98

EARTH TECH

Surveyor's Michigan License No. 25826

