

MAR 1 1999

LIBER 19296PC538

DEC 17 1998 3:31 P.M.

LAND CORNER RECORDATION CERTIFICATE
Filing Requirement of Act 74, Mich. P.A. 1970

SECTION

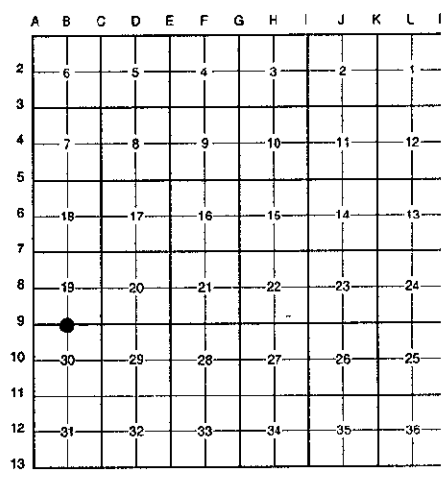
For corners in

Table with columns: Oakland (County), Located in: Lyon Township, Corner Code #. Rows include Public Land Survey, Property Controlling in Section, and Miscellaneous Property in Sec.

7.00 MISCELLANEOUS RECORDING
2.00 REMONUMENTATION
17 DEC 98 3:31 P.M. RECEIPT# 319
PAID RECORDED - OAKLAND COUNTY
G. WILLIAM CARDELL
CLERK/REGISTRAR OF DEEDS
ACT 345, P.A. 1990
APPROVED ON: 11-10-98 JS
OAKLAND COUNTY REMONUMENTATION PEER GROUP COMMITTEE
Register of Deeds Stamp & File Number

- 4. Lot No.
5. Private Claims

I, Bruce Antcliff, in a field survey on October 20 19 98, do hereby certify that under requirements of P.A. 74 Michigan P.A. of 1970, the corner points mentioned in lines 1 and 2 above were in conformance with regulations and rules therefore as required in the current manual of survey instructions of the United States Department of the Interior, Bureau of Land Management or by a decree of a Court of Law and/or that the corner points mentioned in lines 3, 4 and 5 above were in conformance with the rules of the Michigan Board of Land Surveyors or by a Decree of a Court of Law; established, re-established, monumented, re-monumented, recovered, found as expressed below:



NOTE: Not more than 4 corners, all in the same town and range, may be recorded on this certificate.

A. Description of original monument and accessories and/or subsequent restoration:

Table with columns: B-9, 1816, Holmes, G.L.O., Set Post. Rows list various survey dates and monuments.

B. Description of corner evidence found and/or method applied in restoring or reestablishing corner:

B-9 Found a concrete monument with cap #21561 95' +/- South of the C/L of Ten Mile Road (bit.) running East and West on line of a downed fence line running North and South. Also found concrete monument on the North and South right-of-way lines of 10 Mile Road per Assessor's Plat No. 4. Meas. record dist. 62.41' between the monument on South right-of-way line of 10 Mile Road and monument at B-9.

700 FILE
200

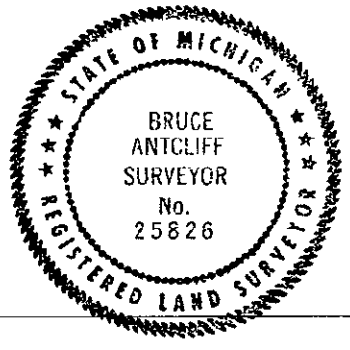
Measure East 2638.77' to C-9 (G.L.O. = 2640.0')
Measure West 1456.76' to A-9 (G.L.O. = 1452.0') (Butterfield Survey (1978) = 1456.33' to TL)

C. Description of monument for corner and accessories established to perpetuate locating the position of the corner:

B-9 Placed a brass cap stamped "Oakland County Remonumentation P.S. #25826" on the existing concrete monument.

- PK Nail & Oakland Co. Remonumentation Tag in SE Side 10" Dead Elm N 30° E 17.62'
PK Nail & Oakland Co. Remonumentation Tag in N Side 14" Dead Elm S 62° E 19.52'
PK Nail & Oakland Co. Remonumentation Tag in S Side 14" Elm S 20° W 35.50'
PK Nail & Oakland Co. Remonumentation Tag in S Side 10" Elm N 85° W 22.33'

The selected location is accepted by the Contractor and is generally accepted by professional surveyors as the best available evidence of the position of the original corner.



Signed by Bruce Antcliff Date 12-10-98
EARTH TECH

Surveyor's Michigan License No. 25826