

REMONUMENTATION

MAR 11 1899

LIBER 19296PG544

DE 17 98 3 53 6 82

LAND CORNER RECORDATION CERTIFICATE
Filing Requirement of Act 74, Mich. P.A. 1970

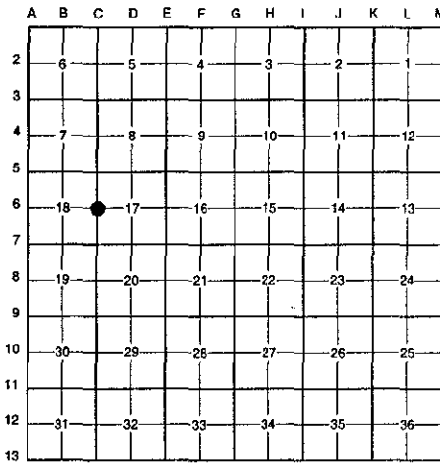
For corners in SECTION

Table with columns: Oakland (County), Located in: Lyon Township, Corner Code #. Rows include Public Land Survey, Property Controlling in Section, Miscellaneous Property in Sec., Lot No., and Private Claims.

\$ 9.00 MISCELLANEOUS RECORDING
\$ 2.00 REMONUMENTATION
17 DEC 98 3:32 P.M. RECEIPT# 518
PAID RECORDED - OAKLAND COUNTY
G. WILLIAM OADDE with
CLERK/REGISTER OF DEEDS
APPROVED ON: 11-10-98 53
OAKLAND COUNTY REMONUMENTATION
PEER GROUP COMMITTEE
Register of Deeds Stamp & File Number

I, Bruce Antcliff, in a field survey on July 29, 1998, do hereby certify that under requirements of P.A. 74 Michigan P.A. of 1970, the corner points mentioned in lines 1 and 2 above were in conformance with regulations and rules therefore as required in the current manual of survey instructions of the United States Department of the interior, Bureau of Land Management or by a decree of a Court of Law and/or that the corner points mentioned in lines 3, 4 and 5 above were in conformance with the rules of the Michigan Board of Land Surveyors or by a Decree of a Court of Law; established, re-established, monumented, re-monumented, recovered, found as expressed below:

NOTE: Not more than 4 corners, all in the same town and range, may be recorded on this certificate.



A. Description of original monument and accessories and/or subsequent restoration:
C-6 1816 Holmes G.L.O. Set Post
1973 McKeever L.C.R.C. L. 6536 P. 185 3/4" Pipe
1977 McKeever Survey N/A

(Continued on Back)

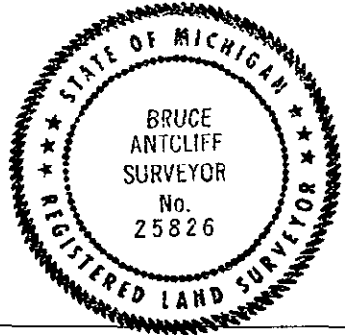
B. Description of corner evidence found and/or method applied in restoring or reestablishing corner:
C-6 Found a 1" iron bar 6' West of the C/L of Pontiac Trail (bit.) running North and South, on line of a fence line running East and West and a tree row running West, and 33' West of iron on East right-of-way of Pontiac Trail. Checks the following witnesses:

- L.C.R.C. L. 6536 P. 185 (1973) East 33.00' 3/4" Pipe (m. 33.01) S 89° E 51.71' P.P. (m. 51.73') N 60° W 26.18' 20" Shagbark Hickory (m. 26.03')
Kostecke Survey (1987) N 55° W 26.20' PK SW/S 18" Hickory (m. 26.03') S 20° W 50.40' PK SE/S 30" Elm (m. 50.30') N 50° E 39.53' PK NW/S P.P. (m. 39.52')

Measure North 2641.0' to C-5 (G.L.O. = 2640.0')
Measure South 2655.1' to C-7 (G.L.O. = 2640.0')

C. Description of monument for corner and accessories established to perpetuate locating the position of the corner:
C-6 Replaced 1" iron with a 5/8" x 24" rebar with brass cap stamped "Oakland County Remonumentation P.S. #25826." Also set a new monument box.
PK Nail & Oakland Co. Remonumentation Tag in SW Side 18" Hickory N 55° W 26.03'
PK Nail & Oakland Co. Remonumentation Tag in SE Side 30" Elm S 20° W 50.30'
PK Nail & Oakland Co. Remonumentation Tag in NW Side Cut Off P. Pole N 50° E 39.52'
PK Nail & Oakland Co. Remonumentation Tag in S Side P. Pole East 51.73'
3/4" Pipe East 33.01'

The selected location is accepted by the Contractor and is generally accepted by professional surveyors as the best available evidence of the position of the original corner.



Signed by Bruce Antcliff Date 12-10-98
EARTH TECH
Surveyor's Michigan License No. 25826

REVISION

MAR 27 1999

SECTION

LIBER 19296PG545

A. Description of original monument and accessories and/or subsequent restoration:

C-6	1977	McKeever	Survey	N/A
	1977	McKeever	Survey	N/A
	1977	Kostecke	Survey	N/A
	1978	Kostecke	Cert. Suvey L. 7244 P. 570	1" Hex Bolt
	1987	Kemnitz	Survey	N/A
	1987	Smith	Survey	1" Iron Bar
	N/A	N/A	Survey	N/A
	1987	Kostecke	Survey	1" Hex Bolt
	N/A	N/A	O.C. Tax Maps	N/A