

LIBER 19296 PGE 01

1998

LAND CORNER RECORDATION CERTIFICATE
Filing Requirement of Act 74, Mich. P.A. 1970

\$ 7.00 MISCELLANEOUS RECORDING
\$ 2.00 REMONUMENTATION
17 DEC 98 3:37 P.M. RECEIPT# 518
PAID RECORDED - OAKLAND COUNTY
G. WILLIAM CADDELL
CLERK/REGISTER OF DEEDS

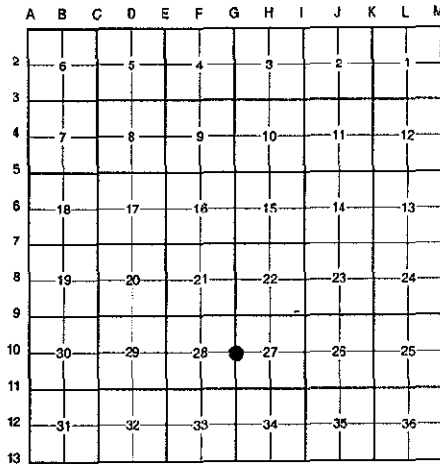
SECTION

For corners in

Oakland (County)	Located in: Lyon Township	Corner Code # G-10
1. Public Land Survey	T <u>1N</u> R <u>7E</u>	<u> </u>
	T <u> </u> R <u> </u>	<u> </u>
	T <u> </u> R <u> </u>	<u> </u>
	T <u> </u> R <u> </u>	<u> </u>
2. Property Controlling in Section	S <u> </u> T <u> </u> R <u> </u>	<u> </u>
	S <u> </u> T <u> </u> R <u> </u>	<u> </u>
3. Miscellaneous Property in Sec.	S <u> </u> T <u> </u> R <u> </u>	<u> </u>
	S <u> </u> T <u> </u> R <u> </u>	<u> </u>
4. Lot No. _____, Recorded Plat _____		
5. Private Claims _____		

Compliance with
ACT 345, P.A. 1990
APPROVED ON: 11-24-98 JS
OAKLAND COUNTY REMONUMENTATION
PEER GROUP COMMITTEE
Register of Deeds Stamp & File Number

I, Bruce Antcliff, in a field survey on July 29 19 98, do hereby certify that under requirements of P.A. 74 Michigan P.A. of 1970, the corner points mentioned in lines 1 and 2 above were in conformance with regulations and rules therefore as required in the current manual of survey instructions of the United States Department of the interior, Bureau of Land Management or by a decree of a Court of Law and/or that the corner points mentioned in lines 3, 4 and 5 above were in conformance with the rules of the Michigan Board of Land Surveyors or by a Decree of a Court of Law; established, re-established, monumented, re-monumented, recovered, found as expressed below:



NOTE: Not more than 4 corners, all in the same town and range, may be recorded on this certificate.

A. Description of original monument and accessories and/or subsequent restoration:

G-10 1816	Holmes	G.L.O.	Set Post
1985	Washtenaw Eng.	Survey	N/A
1991	G. Boss	Survey	1/2" Iron
1996	Hughes	Cert. Survey L. 15987 P. 144	N/A
1996	Bailey	Survey	1/2" Iron Rod
N/A	N/A	O.C. Tax Maps	N/A

B. Description of corner evidence found and/or method applied in restoring or reestablishing corner:

G-10 Found a 1/2" iron at the NE corner of Parcel "B" in Cert. Survey L. 15987 P. 144 on line of a fence row running South. The above surveys all find 1/2" iron and accept as corner. This iron is shown at the corner of fences running West and South by Hughes. No other information on record for this corner. Accepted its location.

Unrecorded Survey (1991)	Unrecorded Survey (1996)
S 80° E 13.10' Nail W/S 30" Maple (m. 13.28')	090 Deg. 29.49' Nail W Tag S/S 30" Twin Maple (m. 24.49')
S 45° W 53.96' Nail W/Side 38" Maple (m. 53.81')	161 Deg. 13.31' Nail W/Tag SW/S 24" Maple (m. 13.28')
West 32.17' Nail N/Side 48" Maple (m. 32.14')	235 Deg. 53.91' Nail W/Tag N/S 36" Maple (m. 53.81')
East 29.46' Nail 30" Maple (m. 24.49')	287 Deg. 32.15' Nail/Tag NE/S 36" Maple (m. 32.14')

7.00 FILE
2.00

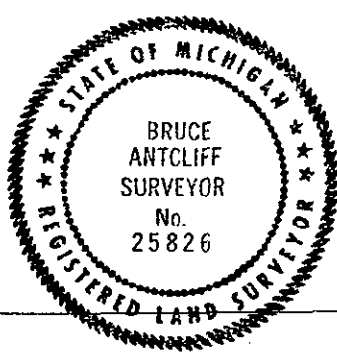
Measure North 2633.4' to G-9 (G.L.O. = 2640.0') (Boss Survey (1991) = 2633.46')
Measure South 2640.8' to G-11 (G.L.O. = 2640.0') (Hughes Survey (1996) = 2642.91) (Bailey Survey (1996) = 2642.91')

C. Description of monument for corner and accessories established to perpetuate locating the position of the corner:

G-10 Replaced 1/2" iron with a 4" x 36" concrete monument with brass cap stamped "Oakland County Remonumentation P.S. #25826"

- PK Nail & Oakland Co. Remonumentation Tag in S Side Twin 30" Oak S 86° E 24.49'
- PK Nail & Oakland Co. Remonumentation Tag in SW Side 24" Maple S 20° E 13.28'
- PK Nail & Oakland Co. Remonumentation Tag in N Side 36" Maple S 51° W 53.81'
- PK Nail & Oakland Co. Remonumentation Tag in NE Side 36" Maple N 66° W 32.14'

The selected location is accepted by the Contractor and is generally accepted by professional surveyors as the best available evidence of the position of the original corner.



Signed by Bruce Antcliff Date 12-10-98
EARTH TECH
Surveyor's Michigan License No. 25826