

JAN 1999

LIBER 19296 PG 604

SECTION

LAND CORNER RECORDATION CERTIFICATE  
Filing Requirement of Act 74, Mich. P.A. 1970

For corners in

Oakland (County)	Located in:	Lyon Township	Corner Code #
1. Public Land Survey	T <u>1N</u>	R <u>7E</u>	<u>G-12</u>
	T _____	R _____	_____
	T _____	R _____	_____
	T _____	R _____	_____
2. Property Controlling in Section	S _____	T _____	R _____
	S _____	T _____	R _____
3. Miscellaneous Property in Sec.	S _____	T _____	R _____
	S _____	T _____	R _____
4. Lot No. _____, Recorded Plat _____			
5. Private Claims _____			

\$ 7.00 MISCELLANEOUS RECORDING  
 \$ 2.00 REMONUMENTATION  
 17 DEC 98 3:37 P.M. RECEIPT# 518  
 PAID RECORDED - OAKLAND COUNTY  
 G. WILLIAM CADDELL  
 CLERK/REGISTRAR OF DEEDS  
 ACT 345, P.A. 1990

APPROVED ON: 12-01-98  
 OAKLAND COUNTY REMONUMENTATION  
 PEER GROUP COMMITTEE

Register of Deeds Stamp & File Number

DE 17 98 37 11

I, Bruce Antcliff, in a field survey on July 29 19 98, do hereby certify that under requirements of P.A. 74 Michigan P.A. of 1970, the corner points mentioned in lines 1 and 2 above were in conformance with regulations and rules therefore as required in the current manual of survey instructions of the United States Department of the interior, Bureau of Land Management or by a decree of a Court of Law and/or that the corner points mentioned in lines 3, 4 and 5 above were in conformance with the rules of the Michigan Board of Land Surveyors or by a Decree of a Court of Law; established, re-established, monumented, re-monumented, recovered, found as expressed below:

NOTE: Not more than 4 corners, all in the same town and range, may be recorded on this certificate.

A. Description of original monument and accessories and/or subsequent restoration:

G-12	1816	Holmes	G.L.O.	Set Post
	1987	Newman	L.C.R.C. L. 11604 P. 639	1/2" Iron Rod
	N/A	N/A	O.C. Tax Maps	N/A

B. Description of corner evidence found and/or method applied in restoring or reestablishing corner:

G-12 Found a 1/2" rered 27' ± East of a chain link fence running North and 10' ± West of the West end of a wooden fence running East per L.C.R.C. L. 1160 P. 639. This corner was found to be at a fence corner by Newman in 1987. No record of who set this iron. Checks two remaining witnesses from L.C.R.C. L. 1160 P. 639. Also checks closely with the distance shown on the O.C. Tax Maps.

L.C.R.C. L. 1160 P. 639 (1987)  
 N 10° E 12.36' 10' Oak (m. 12.23')  
 S 87° E 24.38' 12" Hick. (m. 24.20')

Measure North 2626.1' to G-11 (G.L.O. = 2640.0')(O.C. Tax Maps = 2627.24')  
 Measure South 2635.0' to G-13 (G.L.O. = 2640.0')(O.C. Tax Maps = 2634.72')

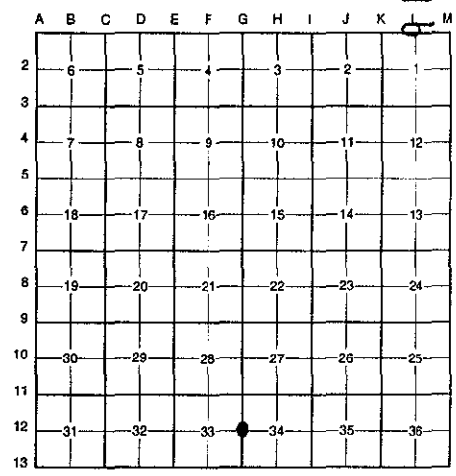
C. Description of monument for corner and accessories established to perpetuate locating the position of the corner:

G-12 Replaced 1/2" rered with a 4" x 36" concrete monument with brass cap stamped "Oakland County Remonumentation P.S. #25826."

- PK Nail & Oakland Co. Remonumentation Tag in E Side 10" Oak N 10° E 12.23'
- PK Nail & Oakland Co. Remonumentation Tag in N Side 12" Hickory S 87° E 24.20'
- PK Nail & Oakland Co. Remonumentation Tag in W Side 10" Elm S 30° E 17.21'
- PK Nail & Oakland Co. Remonumentation Tag in S Side 8" Elm West 30.37'

The selected location is accepted by the Contractor and is generally accepted by professional surveyors as the best available evidence of the position of the original corner.

Signed by Bruce Antcliff Date 12-10-98  
 EARTH TECH  
 Surveyor's Michigan License No. 25826



700 FILE  
200

