

MAR 11 1999

LAND CORNER RECORDATION CERTIFICATE
Filing Requirement of Act 74, Mich. P.A. 1970

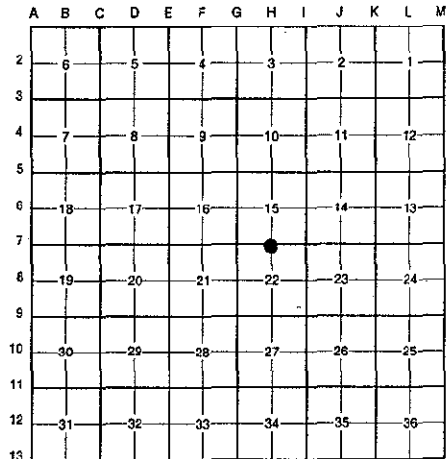
For corners in SECTION

Table with columns: County (Oakland), Located in: Lyon Township, Corner Code # (H-7), and survey details for Public Land Survey, Property Controlling in Section, and Miscellaneous Property in Sec.

\$ 9.00 MISCELLANEOUS RECORDING
\$ 2.00 REMONUMENTATION
17 DEC 98 3:38 P.M. RECEIPT# 513
PAID RECORDED - OAKLAND COUNTY
G. WILLIAM CADWELL
CLERK/REGISTER OF DEEDS
ACT 345, P.A. 1990
APPROVED ON 11-24-98 JS
OAKLAND COUNTY REMONUMENTATION
PEER GROUP COMMITTEE
Register of Deeds Stamp & File Number

4. Lot No. , Recorded Plat
5. Private Claims

I, Bruce Antcliff, in a field survey on June 15 19 98, do hereby certify that under requirements of P.A. 74 Michigan P.A. of 1970, the corner points mentioned in lines 1 and 2 above were in conformance with regulations and rules therefore as required in the current manual of survey instructions of the United States Department of the interior, Bureau of Land Management or by a decree of a Court of Law and/or that the corner points mentioned in lines 3, 4 and 5 above were in conformance with the rules of the Michigan Board of Land Surveyors or by a Decree of a Court of Law; established, re-established, monumented, re-monumented, recovered, found as expressed below:



NOTE: Not more than 4 corners, all in the same town and range, may be recorded on this certificate.

A. Description of original monument and accessories and/or subsequent restoration:
H-7 1816 Holmes G.L.O. Set Post
1950 Baldwin Survey N/A
1960 American Eng. Survey N/A
(Continued on Back)

B. Description of corner evidence found and/or method applied in restoring or reestablishing corner:
H-7 Found a 3/4" pipe on the C/L of Eleven Mile Road (gravel) running East and West on line of a tree row running North. The found 3/4" pipe checks surveys, L.C.R.C.'s and O.C.R.C. Section Corner Ties from 1960 to the present. Also checks the following witnesses:

Table with 3 columns: O.C.R.C. Sec. Corner Ties (1963), L.C.R.C. L. 7779 P. 221 (1980), and Unrecorded Survey (1983). Rows list specific survey details like '21.25' W Side 36" Oak (m. 20.80)' and 'N. 21.03' to 3' Oak (m. 20.80)'.

Measure East 2642.8' to I-7 (G.L.O. = 2643.30')
Measure West 2638.5' to G-7 (G.L.O. = 2643.30') (Kostecke Survey (1980) = 2638.44') (Kostecke Survey (1988) = 2639.28') (Kostecke Survey (1995) = 2638.54')

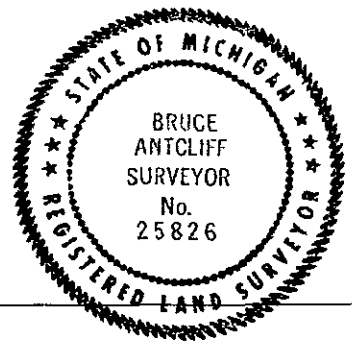
C. Description of monument for corner and accessories established to perpetuate locating the position of the corner:

H-7 Replaced 3/4" pipe with a 5/8" x 24" rebar with brass cap stamped "Oakland County Remonumentation P.S. #25826."
PK Nail & Oakland Co. Remonumentation Tag in E Side P. Pole N 30° W 61.35'
PK Nail & Oakland Co. Remonumentation Tag in E Side 40" Oak n 19° E 20.80'
PK Nail & Oakland Co. Remonumentation Tag in NW Side 16" Cherry N 71° E 70.01'
PK Nail & Oakland Co. Remonumentation Tag in W Side P. Pole S 04° E 30.18'

The selected location is accepted by the Contractor and is generally accepted by professional surveyors as the best available evidence of the position of the original corner.

Signed by Bruce Antcliff Date 12-10-98
EARTH TECH

Surveyor's Michigan License No. 25826



MAR 11 1993

LIBER 19296PC609

SECTION

A. Description of original monument and accessories and/or subsequent restoration:

H-7	1963	N/A	O.C.R.C. Sec. Cor. Ties	3/4" Iron Pipe
	1967	Kostecke	Plan of Survey	N/A
	1973	Kostecke	Survey	3/4" Pipe
	1980	G. Boss	L.C.R.C. L. 7779 P. 221	3/4" Pipe
	1980	Kostecke	Cert. Survey L. 7728 P. 33	3/4" Pipe
	1980	G. Boss	Cert. Survey L. 7844 P. 87	N/A
	1983	Kostecke	Survey	Fnd. Iron
	1985	Thompson	Cert. Survey L. 9210 P. 378	1/2" Pipe
	1988	Kostecke	Survey	N/A
	1989	Kostecke	Survey	N/A
	1995	Kostecke	Survey	N/A
	N/A	N/A	O.C. Tax Maps	N/A