

RECORD

1989

LIBER 19296PG611

LAND CORNER RECORDATION CERTIFICATE
Filing Requirement of Act 74, Mich. P.A. 1970

For corners in

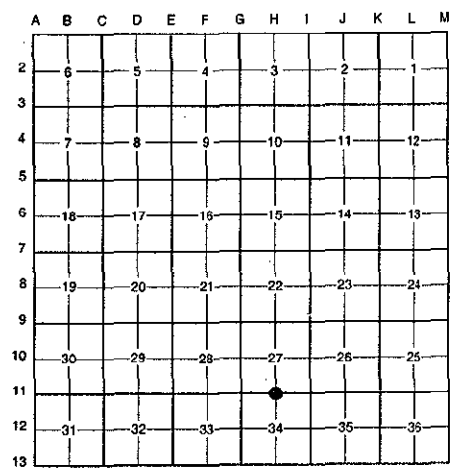
SECTION

Form with fields for County (Oakland), Township (Lyon), Corner Code # (H-11), and numbered sections 1-5 for Public Land Survey, Property Controlling in Section, Miscellaneous, and Private Claims.

Stamp area containing recording fees (\$9.00, \$2.00), date (17 DEC 98), time (3:38 P.M.), recorder name (G. WILLIAM CADDELL), and approval signature (11-24-98 JS).

I, Bruce Antcliff, in a field survey on July 29, 1998, do hereby certify that under requirements of P.A. 74 Michigan P.A. of 1970, the corner points mentioned in lines 1 and 2 above were in conformance with regulations and rules therefore as required in the current manual of survey instructions of the United States Department of the interior, Bureau of Land Management or by a decree of a Court of Law and/or that the corner points mentioned in lines 3, 4 and 5 above were in conformance with the rules of the Michigan Board of Land Surveyors or by a Decree of a Court of Law; established, re-established, monumented, re-monumented, recovered, found as expressed below:

NOTE: Not more than 4 corners, all in the same town and range, may be recorded on this certificate.



A. Description of original monument and accessories and/or subsequent restoration:

Table with 4 columns: H-11, Year (1816, 1921, 1972), Name (Holmes, Mackey, N/A), Description (G.L.O. Survey, Cert. Survey L. 5820 P. 443), and Set Post (Set Post, N/A, N/A).

(Continued on Back)

B. Description of corner evidence found and/or method applied in restoring or reestablishing corner:

H-11 Found a 1/2" iron 2.5' South of the C/L of 9 Mile Road (gravel) running East and West on line of a tree row and a fence line running North. The found iron checks surveys, L.C.R.C.'s and O.C.R.C. Section Corner Ties from 1976 to the present. Also checks closely with the 1921 survey by Mackey.

Table with 2 columns: L.C.R.C. L. 10314 P. 697 (1988) and L.C.R.C. L. 14484 P. 074 (1994). Each row lists bearings and distances for 6" Locust, 8" Elm, and 6" Elm monuments.

Measure East 2582.2' to I-11 (Kostecke Survey (1989) = 2621.10') (Ward Survey (1994) = 2581.90') (Survey (1928) = 2583.5')
Measure West 2620.8' to G-11 (G.L.O. = 2620.2') (Landini Survey (1976) = 2620.60') (Ward Survey (1988) = 2620.57') (Thompson Survey (1993) = 2620.63') (Survey (1921) = 2623.0')

C. Description of monument for corner and accessories established to perpetuate locating the position of the corner:

H-11 Replaced 1/2" iron with a 5/8" x 24" rebar with brass cap stamped "Oakland County Remonumentation P.S. #25826."

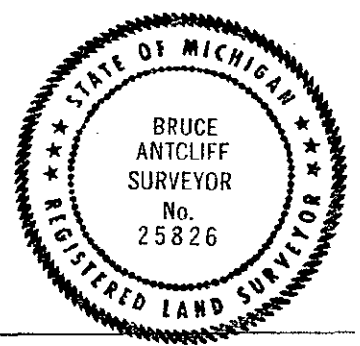
- List of monument tags: PK Nail & Oakland Co. Remonumentation Tag in S'y Side 6" Elm N 72° E 47.51', PK Nail & Oakland Co. Remonumentation Tag in N Face 6" Locust S 50° E 33.82', PK Nail & Oakland Co. Remonumentation Tag in W Face 8" Elm N 05° W 25.05', PK Nail & Oakland Co. Remonumentation Tag in S Face 6" Elm N 55° W 37.74'

The selected location is accepted by the Contractor and is generally accepted by professional surveyors as the best available evidence of the position of the original corner.

Signed by Bruce Antcliff Date 12-10-98

EARTH TECH

Surveyor's Michigan License No. 25826



SECTION
REVISION INFORMATION

MAR 11 1989

NUMBER 19296PCS12

SECTION

A. Description of original monument and accessories and/or subsequent restoration:

H-11	1976	Landini	L.C.R.C. L. 6641 P. 140	Iron Rod
	1976	Landini	Cert. Survey L. 6641 P. 141	N/A
	1980	Landini	Survey	N/A
	1986	McNeeley	Survey	N/A
	1988	Ward	Cert. Survey L. 10407 P. 481	Iron Pipe
	1988	Ward	L.C.R.C. L. 10314 P. 697	1" Iron
	1990	Kostecke	Survey	Rerod
	N/A	N/A	O.C. Tax Maps	N/A