

MAR 21 1998

LAND CORNER RECORDATION CERTIFICATE
Filing Requirement of Act 74, Mich. P.A. 1970

SECTION

For corners in

Table with columns: Located in: Lyon Township, Corner Code #. Rows include Public Land Survey, Property Controlling in Section, and Miscellaneous Property in Sec.

\$ 7.00 MISCELLANEOUS RECORDING
\$ 2.00 REMONUMENTATION
17 DEC 98 3:39 P.M. RECEIPT# 518
PAID RECORDED - OAKLAND COUNTY
G. WILLIAM CARROLL, CLERK/REGISTER OF DEEDS
APPROVED ON: 11-24-98 JS
OAKLAND COUNTY REMONUMENTATION PEER GROUP COMMITTEE
Register of Deeds Stamp & File Number

- 4. Lot No. , Recorded Plat
5. Private Claims

I, Bruce Antcliff, in a field survey on June 17 19 98, do hereby certify that under requirements of P.A. 74 Michigan P.A. of 1970, the corner points mentioned in lines 1 and 2 above were in conformance with regulations and rules therefore as required in the current manual of survey instructions of the United States Department of the interior, Bureau of Land Management or by a decree of a Court of Law and/or that the corner points mentioned in lines 3, 4 and 5 above were in conformance with the rules of the Michigan Board of Land Surveyors or by a Decree of a Court of Law; established, re-established, monumented, re-monumented, recovered, found as expressed below:

NOTE: Not more than 4 corners, all in the same town and range, may be recorded on this certificate.

A. Description of original monument and accessories and/or subsequent restoration:

Table with columns: J-7, 1816, 1981, 1985, 1987, 1992, N/A; Holmes, Fahrner, Green, Green, Green, N/A; G.L.O., L.C.R.C. L. 8071 P. 883, Survey, Survey, Cert. Survey L. 12863 P. 743, O.C. Tax Maps; Set Post, Iron Pipe, N/A, N/A, N/A, N/A.

B. Description of corner evidence found and/or method applied in restoring or reestablishing corner:

J-7 Found a capped iron in a 1' dia. concrete base .43' North of a 3" dia. steel fence post corner of fences running West and North.. Checks the following witnesses:

L.C.R.C. L. 8071 P. 883 (1981) Cert. Survey L. 12863 P. 883 (1992)
N 30° W 1.70' to Nail in Wooden Post (m. 1.64') NW 1.7' Wd Fen Po (m. 1.64')
East 3.80' N Side MBT Box (m. 3.80') E 3.8' Phone Box (m. 3.80')

Measure East 2630.0' to K-7 (G.L.O. = 2636.7')
Measure West 2655.5' to I-7 (G.L.O. = 2636.7')

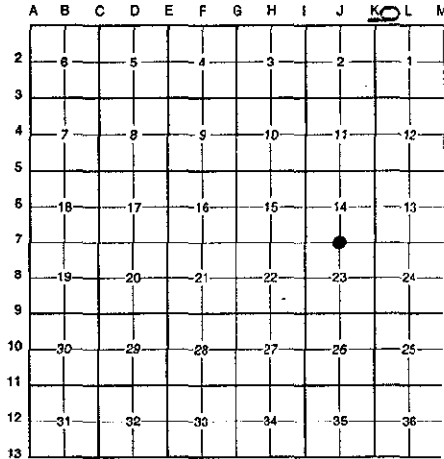
C. Description of monument for corner and accessories established to perpetuate locating the position of the corner:

J-7 Placed a brass cap stamped "Oakland County Remonumentation P.S. #25826" on an existing 1" iron in concrete.

- PK Nail & Oakland Co. Remonumentation Tag in Wood Post N 30° W 1.64'
C/L N Side MBT Box East 3.80'
PK Nail & Oakland Co. Remonumentation Tag in W Cor. 4x4 Wood Post to Stop Sign South 43.28'
PK Nail & Oakland Co. Remonumentation Tag in SW Side 12" Poplar S 48° E 67.18'
PK Nail & Oakland Co. Remonumentation Tag in NE Bottom Cor. to 2' x 2' Brick Sign Post to Haas Lk. Vill. S 50° W 63.48'
PK Nail & Oakland Co. Remonumentation Tag in N Face 3" Dia. Steel Fence Post (Cor.) South .43'

The selected location is accepted by the Contractor and is generally accepted by professional surveyors as the best available evidence of the position of the original corner.

Signed by Bruce Antcliff Date 12-10-98
EARTH TECH
Surveyor's Michigan License No. 25826



FILE 200

