

LAND CORNER RECORDATION CERTIFICATE
Filing Requirement of Act 74, Mich. P.A. 1970

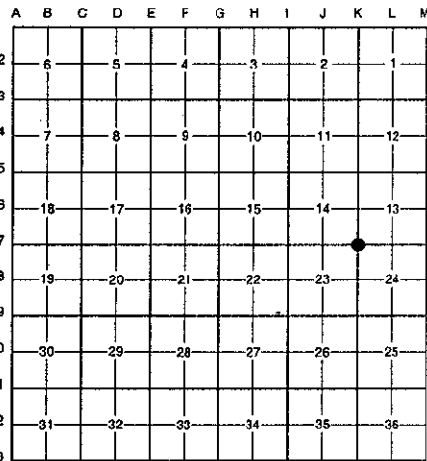
SECTION

For corners in

Form with fields for County (Oakland), Township (Lyon), Corner Code # (K-7), and survey details (Public Land Survey, Property Controlling, etc.)

Stamp area containing recording fees (\$7.00 MISCELLANEOUS RECORDING, \$2.00 REMONUMENTATION), date (17 DEC 98 3:40 P.M.), and signature (G. WILLIAM CAIDELL, CLERK/REGISTER OF DEEDS)

APPROVED ON: 11-24-98 53
OAKLAND COUNTY REMONUMENTATION PEER GROUP COMMITTEE
Register of Deeds Stamp & File Number



I, Bruce Antcliff, in a field survey on October 26 19 98, do hereby certify that under requirements of P.A. 74 Michigan P.A. of 1970, the corner points mentioned in lines 1 and 2 above were in conformance with regulations and rules therefore as required in the current manual of survey instructions of the United States Department of the Interior, Bureau of Land Management or by a decree of a Court of Law and/or that the corner points mentioned in lines 3, 4 and 5 above were in conformance with the rules of the Michigan Board of Land Surveyors or by a Decree of a Court of Law; established, re-established, monumented, re-monumented, recovered, found as expressed below:

NOTE: Not more than 4 corners, all in the same town and range, may be recorded on this certificate.

A. Description of original monument and accessories and/or subsequent restoration:

Table with 4 columns: Corner Code, Survey Name, Description, and Status. Row 1: K-7, 1816, Holmes, G.L.O., Set Post. Row 2: 1989, Boss, Cert. Survey L. 11156 P. 249, N/A. Row 3: N/A, N/A, O.C. Tax Maps, N/A.

B. Description of corner evidence found and/or method applied in restoring or reestablishing corner:

K-7 Found a 1/2" iron pipe in Walnut Creek Country Club 60' East of a fence line running North and South (West line of parcel #21-23-200-003). No occupation North, South, East or West. The found 1/2" iron pipe checks 1348.09' South of iron shown in Boss Survey L. 11156 P. 249.

- Measure North 2658.2' to K-6 (G.L.O. = 2640.0') (Boss Survey (1989) = 2652.67')
Measure South 2596.3' to K-8 (G.L.O. = 2640.0') (O.C. Tax Maps = 2605.44')
Measure East 2651.6' to L-7 (G.L.O. = 2673.66') (Boss Survey (1989) = 2647.02')
Measure West 2630.0' to J-7 (G.L.O. = 2636.7')

C. Description of monument for corner and accessories established to perpetuate locating the position of the corner:

K-7 Replaced 1/2" iron pipe with a 4" x 36" concrete monument with brass cap stamped "Oakland County Remonumentation P.S. #25826."

- PK Nail & Oakland Co. Remonumentation Tag in SE Side 5" Pine S 50° W 56.20'
PK Nail & Oakland Co. Remonumentation Tag in SW Side 5" Pine N 45° W 63.67'
PK Nail & Oakland Co. Remonumentation Tag in N Side Twin 12" & 6" Oak S 80° E 72.84'
PK Nail & Oakland Co. Remonumentation Tag in NW Side Triple 24", 24" & 30" Oak N 45° E 138.98'
C/L Fence Cor. S 90° W 59.90'

The selected location is accepted by the Contractor and is generally accepted by professional surveyors as the best available evidence of the position of the original corner.

Signed by Bruce Antcliff Date 12-10-98

EARTH TECH

Surveyor's Michigan License No. 25826

