

SECTION

LAND CORNER RECORDATION CERTIFICATE
Filing Requirement of Act 74, Mich. P.A. 1970

For corners in

Form with fields for County (Oakland), Located in (Lyon Township), Corner Code # (L-7), and numbered sections 1-5 for survey types.

Stamp area containing recording fees (\$7.00 MISCELLANEOUS RECORDING, \$2.00 REMONUMENTATION), date (17 DEC 98), and approval information.

Vertical stamp: DE 17 98 313 730

I, Bruce Antcliff, in a field survey on October 26 19 98, do hereby certify that under requirements of P.A. 74 Michigan P.A. of 1970, the corner points mentioned in lines 1 and 2 above were in conformance with regulations and rules therefore as required in the current manual of survey instructions of the United States Department of the interior, Bureau of Land Management or by a decree of a Court of Law and/or that the corner points mentioned in lines 3, 4 and 5 above were in conformance with the rules of the Michigan Board of Land Surveyors or by a Decree of a Court of Law; established, re-established, monumented, re-monumented, recovered, found as expressed below:

NOTE: Not more than 4 corners, all in the same town and range, may be recorded on this certificate.

A. Description of original monument and accessories and/or subsequent restoration:

Table with 4 columns: Survey No., Name, G.L.O., and Monument Type. Rows include 1816 Holmes G.L.O. Set Post, 1967 Giffels Leonard Farms Sub. L. 89 P. 30 N/A, 1971 Fox Survey N/A, 1974 Smith Survey Iron Pipe, 1988 DeKeyser Survey 1" Pipe, 1989 Boss Survey N/A, and N/A N/A O.C. Tax Maps N/A.

B. Description of corner evidence found and/or method applied in restoring or reestablishing corner:

L-7 Found a 5/8" rerod on the C/L intersection of 11 Mile Road (gravel) and John's Road (gravel) 35' ± East of a right-of-way fence line running North and South. The found 5/8" rerod checks 60' North and 43' West of plat monument a Northwest corner lot (Lot 13) of Leonard Farms and 33' West and South of rebar corner of James Smith survey. Found iron at the Northeast corner of Leonard Farms. Using 60' North of this point and concrete monument at the Northwest corner of Leonard Farms, extended line West. Line checks L-7 OK. Meas. East from L-7 672.0' (Rec. = 672.0') to East line of Leonard Farms Sub. The found 5/8" rerod also checks surveys from 1971 to the present. Checks the following witnesses:

Unrecorded Survey (1988)

- S 40° E 46.39' 18" Oak (m. 46.41')
S 50° E 44.00' 8" Maple (m. 43.94')
N 45° E 35.40' Ctr. Fence Corner (m. 35.12')
S 35° W 53.50' 13" x 18" Maple (m. 53.70')
West 34.96' N & S 5' Fen.

- Measure East 2679.9' to M-7 (G.L.O. = 2673.66')
Measure West 2651.6' to K-7 (G.L.O. = 2673.66') (Boss Survey (1989) = 2647.02')

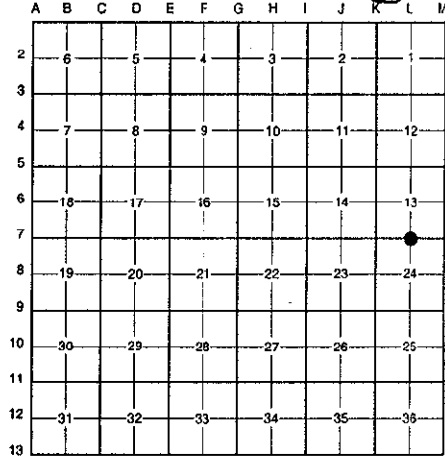
C. Description of monument for corner and accessories established to perpetuate locating the position of the corner:

L-7 Replaced 5/8" rerod with a 5/8" x 24" rebar with brass cap stamped "Oakland County Remonumentation P.S. #25826."

- PK Nail & Oakland Co. Remonumentation Tag in NE Side 22" Oak S 40° E 46.41'
PK Nail & Oakland Co. Remonumentation Tag in E Side 18" & 12" Twin Maple S 35° W 53.70'
PK Nail & Oakland Co. Remonumentation Tag in SW Side 10" Maple S 50° E 43.94'
PK Nail & Oakland Co. Remonumentation Tag in Top Wood Post N 45° E 35.12'
PK Nail & Oakland Co. Remonumentation Tag in E Side 10" Oak N 30° W 64.19'

The selected location is accepted by the Contractor and is generally accepted by professional surveyors as the best available evidence of the position of the original corner.

Signed by Bruce Antcliff Date 12-10-98
EARTH TECH
Surveyor's Michigan License No. 25826



Handwritten note: 700 FILL 200

