

JAN 397001285

COPY

LIBER 16874 PG 133

LAND CORNER RECORDATION CERTIFICATE Filing Requirement of Act 74, Mich. P.A. 1970

For corners in

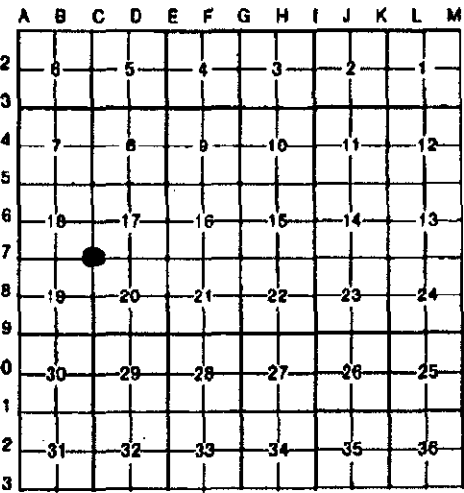
Oakland (county)	Located In:	Corner Code #
1. Public Land Survey	T1N R8E	C-7 (Page 1)
	T R	
	T R	
	T R	
2. Property Controlling in Section	S T R	
	S T R	
3. Miscellaneous Property in Sec.	S T R	
	S T R	

\$ 9.00 MISCELLANEOUS RECORDING
 \$ 2.00 REMONUMENTATION
 3 JAN 97 7:49 A.M. RECEIPT# 88
 PAID RECORDED - OAKLAND COUNTY
 LARRY D. MILLER, CLERK/REGISTER OF DEEDS

Compliance with
 ACT 345, P.A. 1990
 APPROVED ON: 7-31-96 TMS
 OAKLAND COUNTY REMONUMENTATION
 PEER GROUP COMMITTEE
 Register of Deeds Stamp & File Number

4. Lot No. _____, Recorded Plat _____
 5. Private Claims _____

I, Joseph C. Kapelczak, in a field survey on 22 January, 1996, do hereby certify that under requirements of P.A. 74, Michigan P.A. of 1970, the corner points mentioned in lines 1 and 2 above were in conformance with regulations and rules therefore as required in the current manual of survey instructions of the United States Department of the Interior, Bureau of Land Management or by a decree of a Court of Law and/or that the corner points mentioned in lines 3, 4 and 5 above were in conformance with the rules of the Michigan Board of Land Surveyors or by a Decree of a Court of Law, established, re-established, monumented, re-monumented, recovered, found as expressed below:



NOTE: Not more than 4 corners, all in the same town and range, may be recorded on this certificate.

A. Description of original monument and accessories and/or subsequent restoration:

Post set in 1816 G.L.O. survey: N 35 W 41ks, 20" Red Oak; S 13 W 111ks, 26" Red Oak.

LCRC L6449 P210
 Postiff 1974
 1/2" iron rod
 N 20 E 66.02' PK nail west face twin 18" Oaks
 S 60 E 65.46' PK nail north face 30" dead Elm
 N 90 W 69.73' PK nail north face 24" Maple

LCRC L11545 P143
 Milletics, 1989, Fd. steel bar
 N 30 E 65.95' Nail west side 24" twin Oak
 S 60 E 65.75' Nail north side tree stump
 West 69.95' Nail north side 30" Maple
 N 30 W 106.06' Nail east side utility pole

B. Description of corner evidence found and/or method applied in restoring or reestablishing corner:

Recovered 1/2" rerod in monument box at centerlines of Wixom & 11 Mile Rds.

Recovered witnesses:
 N 87 W 69.21' PK/shinner south side 30" Maple
 N 48 W 43.08' PK/shinner northeast side 26" Walnut
 N 17 W 111.78' PK nail east side power pole
 N 48 E 60.38' 1/2" capped rerod southwest corner parcel # 22-17-300-004

**SURVEY &
 REMONUMENTATION**
 MAY 22 1997
 COMMISSION

C. Description of monument for corner and accessories established to perpetuate locating the position of the corner:

Set O.C. Remonumentation brass cap on exsting 1/2" rerod

N 87 W 69.27' PK/remon tag south side 30" Maple
 N 48 W 42.86' PK /remon tag northeast side 26" Walnut
 N 17 W 111.79' PK/remon tag east side power pole
 S 80 W 131.64' PK/remon tag north side 8" Elm

900
 260
 file



Signed by Joseph C. Kapelczak
 Surveyor's Michigan License No. 24598

Date 7/12/96

COPY

LIBER 16874 PG 134

LAND CORNER RECORDATION CERTIFICATE Filing Requirement of Act 74, Mich. P.A. 1970

For corners in

<u>Oakland</u> (county)	Located In:	Corner Code #
1. Public Land Survey	T <u>1</u> N R <u>8</u> E	<u>C-7 (page 2)</u>
	T ___ R ___	_____
	T ___ R ___	_____
	T ___ R ___	_____
2. Property Controlling in Section	S ___ T ___ R ___	_____
	S ___ T ___ R ___	_____
3. Miscellaneous Property in Sec.	S ___ T ___ R ___	_____
	S ___ T ___ R ___	_____

Compliance with
ACT 345, P.A. 1990

APPROVED ON: 7-31-96 TMS

OAKLAND COUNTY REMONUMENTATION
PEER GROUP COMMITTEE

Register of Deeds Stamp & File Number

4. Lot No. _____, Recorded Plat _____

5. Private Claims _____

I, Joseph C. Kapelczak, in a field survey on 22 January, 1996, do hereby certify that under requirements of P.A. 74, Michigan P.A. of 1970, the corner points mentioned in lines 1 and 2 above were in conformance with regulations and rules therefore as required in the current manual of survey instructions of the United States Department of the Interior, Bureau of Land Management or by a decree of a Court of Law and/or that the corner points mentioned in lines 3, 4 and 5 above were in conformance with the rules of the Michigan Board of Land Surveyors or by a Decree of a Court of Law; established, re-established, monumented, re-monumented, recovered, found as expressed below:

A	B	C	D	E	F	G	H	I	J	K	L	M
2	6	5	4	3	2	1						
3												
4	7	8	9	10	11	12						
5												
6	16	17	16	15	14	13						
7		●										
8	19	20	21	22	23	24						
9												
10	30	29	28	27	26	25						
11												
12	31	32	33	34	35	36						
13												

NOTE: Not more than 4 corners, all in the same town and range, may be recorded on this certificate.

A. Description of original monument and accessories and/or subsequent restoration:
(Page 2)

- | | | |
|------------------------------------------------------------------------------------------------------------------------------------------------------------------------------------------|--------------------------------------------------------------------------------------------------------------------------------------------------|------------------------------------------------------------------------------------------------------------------------------------------------------------------------------------------------------------------------------------------------------------------------------|
| LCRC L11432 P168
Zeimet, 1990, FD. iron bar
N 10 W 106.15' Nail in east side utility pole
N 85 W 69.67' Nail in north side 30" Maple
N 20 E 66.03' Nail in west side 48" Oak | LCRC L11604 P648
Newman, 1990, 1/2" rerod
S 20 E 53.56' 8" Elm
N 20 E 65.08' 18" Oaks
S 60 E 65.46' 30" Elm
East 69.73' 24" Maple | LCRC L12689 P186
Dwyer, 1992, 1/2" rerod
N 25 E 64.99' Nail west side twin 18" tree
S 60 E 65.65' Nail north side stump
N 84 W 69.63' Nail north side 24" Maple
N 70 W 106.03' Nail southeast side Civil Defence pole
S 25 W 53.49' Nail east side 8" tree |
|------------------------------------------------------------------------------------------------------------------------------------------------------------------------------------------|--------------------------------------------------------------------------------------------------------------------------------------------------|------------------------------------------------------------------------------------------------------------------------------------------------------------------------------------------------------------------------------------------------------------------------------|

B. Description of corner evidence found and/or method applied in restoring or reestablishing corner:

C. Description of monument for corner and accessories established to perpetuate locating the position of the corner:

**SURVEY &
REMONUMENTATION**

MAY 22 1997

COMMISSION



Signed by _____ Date _____

Surveyor's Michigan License No. _____