

COPY

LIRER 1685016400

Dec 1996 306294

LAND CORNER RECORDATION CERTIFICATE
Filing Requirement of Act 74, Mich. P.A. 1970

For corners in

Table with columns: Oakland (county), Located In:, Corner Code #. Rows include Public Land Survey, Property Controlling in Section, and Miscellaneous Property in Sec.

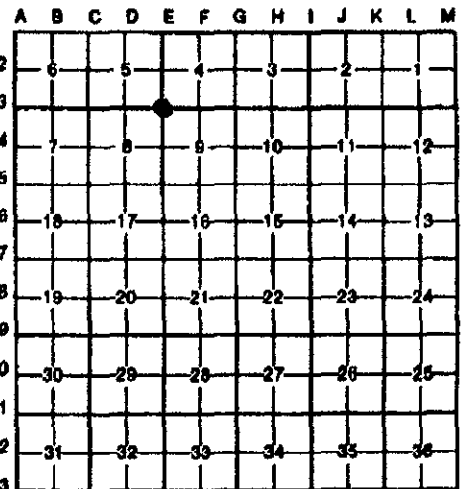
\$ 9.00 MISCELLANEOUS RECORDING
\$ 2.00 REMONUMENTATION
19 DEC 96 10:59 A.M. RECEIPT# 178
PAID RECORDED - OAKLAND COUNTY
LYNN D. ALLEN, CLERK/REGISTER OF DEEDS

Compliance with ACT 345, P.A. 1990
APPROVED ON: 9-11-96
OAKLAND COUNTY REMONUMENTATION PEER GROUP COMMITTEE
Register of Deeds Stamp & File Number

4. Lot No. Recorded Plat

5. Private Claims

I, Joseph C. Kapelczak, in a field survey on February 10, 1995, do hereby certify that under requirements of P.A. 74, Michigan P.A. of 1970, the corner points mentioned in lines 1 and 2 above were in conformance with regulations and rules therefore as required in the current manual of survey instructions of the United States Department of the Interior, Bureau of Land Management or by a decree of a Court of Law and/or that the corner points mentioned in lines 3, 4 and 5 above were in conformance with the rules of the Michigan Board of Land Surveyors or by a Decree of a Court of Law; established, re-established, monumented, re-monumented, recovered, found as expressed below:



NOTE: Not more than 4 corners, all in the same town and range, may be recorded on this certificate.

A. Description of original monument and accessories and/or subsequent restoration:

Post set in 1816 G.L.O. survey: S 19-1/2 E 10 lks 10" Beech N 13 W 38 lks 36" Red Oak

LCRC L.8335 P.562 Kapelczak 1983
N 65 W 65.27' PK nail northwest side power pole
N 65 E 67.70' set PK nail northeast side MBT pole
S 45 E 86.04 PK nail southwest side power pole
LCRC L.11732 P.175 Murphy 1990
NW 65.27' PK nail northeast side pole
SE 85.71' MPR tag #555 northeast side pole
NE 68.34' southeast corner metal control box
SW 72.58' MPR tag #604 southeast side power pole

LCRC L.10943 P.494 Stevenson 1989
N 62 W 65.30' nail w/cap #13001 northeast face D.E. pole
N 63 30 E 67.70' PK nail w/washer north side D.E. pole
S 45 E 86.10' nail w/cap #13001 southwest side D.E. pole
N 45 W 94.85' southeast corner concrete porch slab

B. Description of corner evidence found and/or method applied in restoring or reestablishing corner:

Recovered Monument Box, no iron.

Recovered witnesses to centerline of Monument Box.

S 44 E 85.58' PK nail w/tag #555 northeast side power pole
S 43 E 85.85' PK nail southwest side power pole
S 43 E 85.84' nail w/cap #13001 southwest side power pole
S 43 E 85.63' nail w/tag #17623 southwest side power pole
N 57 W 65.58' nail w/tag #17623 northeast side power pole
N 57 W 65.39' nail w/cap #13001 northeast side power pole
S 51 W 72.57' nail w/tag #604 southeast side power pole
N 70 W 114.50' 1/2" rerod RLS #19831 southwest corner

C. Description of monument for corner and accessories established to perpetuate locating the position of the corner:

Set remonumentation brass cap.

N 48 E 86.70' set nail w/remon tag northwest power pole
N 57 W 65.54' set nail w/remon tag northeast side power pole
N 43 W 80.75' set nail w/remon tag southwest side 12" Maple
S 51 W 72.56' set nail w/remon tag southeast side power pole

SURVEY & REMONUMENTATION

MAY 22 1997

COMMISSION

9.00 FILE
2.00



Signed by Joseph C. Kapelczak

Date 9/10/96

Surveyor's Michigan License No. 24598

COPY

LAND CORNER RECORDATION CERTIFICATE
Filing Requirement of Act 74, Mich. P.A. 1970

For corners in

<u>Oakland</u> (county)	Located in:	Corner Code #
1. Public Land Survey	T1N R8E	<u>E-3 (Page 2)</u>
	T R	
	T R	
	T R	
2. Property Controlling in Section	S T R	
	S T R	
3. Miscellaneous Property in Sec.	S T R	
	S T R	

Compliance with
ACT 345, P.A. 1970

APPROVED ON: 9-11-96
OAKLAND COUNTY REMONUMENTATION
PIER GROUP COMMITTEE

Register of Deeds Stamp & File Number

4. Lot No. _____, Recorded Plat _____

5. Private Claims _____

I, Joseph C. Kapelczak, in a field survey on February 10, 1995, do hereby certify that under requirements of P.A. 74, Michigan P.A. of 1970, the corner points mentioned in lines 1 and 2 above were in conformance with regulations and rules therefore as required in the current manual of survey instructions of the United States Department of the Interior, Bureau of Land Management or by a decree of a Court of Law and/or that the corner points mentioned in lines 3, 4 and 5 above were in conformance with the rules of the Michigan Board of Land Surveyors or by a Decree of a Court of Law; established, re-established, monumented, re-monumented, recovered, found as expressed below:

	A	B	C	D	E	F	G	H	I	J	K	L	M
2	6	5	4	3	2	1							
3													
4	7	8	9	10	11	12							
5													
6	18	17	16	15	14	13							
7													
8	19	20	21	22	23	24							
9													
10	30	29	28	27	26	25							
11													
12	31	32	33	34	35	36							
13													

NOTE: Not more than 4 corners, all in the same town and range, may be recorded on this certificate.

A. Description of original monument and accessories and/or subsequent restoration:

Recent surveys.

M.E. Baldwin L.25 P.150 1957
Iron
NW 136.40' 18" Elm
NE 86.10' 18" Elm
SW 57.00' 18" Basswood

Kapelczak 1995 L.15423 P.134
N 57 W 65.27' PK nail northeast side power pole
N 65 E 67.70' PK nail w/washer north side MBT pole
S 45 E 86.04' PK nail southwest side power pole

B. Description of corner evidence found and/or method applied in restoring or reestablishing corner:

SURVEY &
REMONUMENTATION

MAY 22 1997

COMMISSION

C. Description of monument for corner and accessories established to perpetuate locating the position of the corner:



Signed by Joseph C. Kapelczak
Surveyor's Michigan License No. 24598

Date 9/10/96