

COPY

LIBER 16874 PG 143

JAN 397001291

LAND CORNER RECORDATION CERTIFICATE
Filing Requirement of Act 74, Mich. P.A. 1970

For corners in

Table with columns: Oakland (county), Located In:, Corner Code #. Rows include Public Land Survey, Property Controlling in Section, and Miscellaneous Property in Sec.

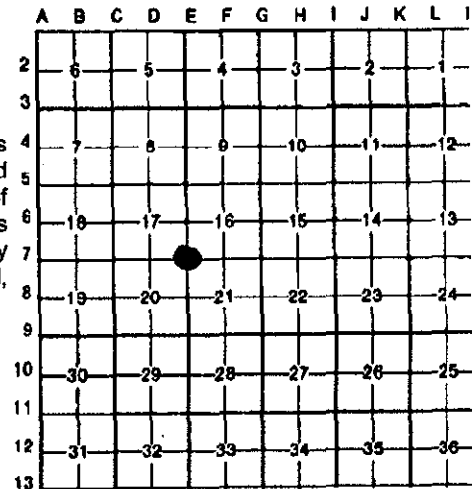
\$ 9.00 MISCELLANEOUS RECORDING
\$ 2.00 REMONUMENTATION
3 JAN 97 7:50 A.M. RECEIPT# 88
PAID RECORDED - OAKLAND COUNTY
LYNN D. ALLEN, CLERK/REGISTER OF DEEDS

Compliance with ACT 345, P.A. 1990
APPROVED ON: 7-31-96 JMS
OAKLAND COUNTY REMONUMENTATION PEER GROUP COMMITTEE
Register of Deeds Stamp & File Number

4. Lot No. , Recorded Plat

5. Private Claims

I, Joseph C. Kapelczak, in a field survey on 23 January, 1996, do hereby certify that under requirements of P.A. 74, Michigan P.A. of 1970, the corner points mentioned in lines 1 and 2 above were in conformance with regulations and rules therefore as required in the current manual of survey instructions of the United States Department of the Interior, Bureau of Land Management or by a decree of a Court of Law and/or that the corner points mentioned in lines 3, 4 and 5 above were in conformance with the rules of the Michigan Board of Land Surveyors or by a Decree of a Court of Law, established, re-established, monumented, re-monumented, recovered, found as expressed below:



NOTE: Not more than 4 corners, all in the same town and range, may be recorded on this certificate.

A. Description of original monument and accessories and/or subsequent restoration:

- List of monuments and restoration details: Post set in 1816 survey; LCRC L6449 P210 Posttiff 1974; Re-established temporary point from records; N 20 E 98.50' Nail west tree of 3-8" Maples; N 45 W 75.50' Nail in telephone pole; S 45 E 83.80' Nail in telephone pole; LCRC L5684 P720; Wilson, 1971, 1/2" rerod; N 75 W 247.70' Spike in easterly side 20" Oak; N 30 E 98.50' Spike in cluster of 3-6" Maples; S 40 E 83.80' Spike in power pole; LCRC L8335 P564; Kapelczak, 1982, 1" pipe; S 55 E 100.00', 200.00' & 300.00' Set tacked hubs; S 46 W 100.00' & 200.00' Set Tacked hubs (These were set to reset corner after consrtution)

B. Description of corner evidence found and/or method applied in restoring or reestablishing corner:

- Recovered 1/2" rerod in monument box at centerline of 11 Mile & Beck Rds.
Recovered witnesses:
*S 43 E 84.08' Nail/washer southwest side power pole
*N 52 E 100.31' Nail/washer northwest side power pole
*N 25 W 75.44' Nail/tag # J&A s.west side power pole
S 51 W 56.70' PK nail southeast side telephone pole
*S 51 W 56.77 Nail/tag southeast side telephone pole

SURVEY & REMONUMENTATION

MAY 22 1997

COMMISSION

*confirms LCRC witness

C. Description of monument for corner and accessories established to perpetuate locating the position of the corner:

- Set O.C. remonumentation brass cap on exsting 1/2" rerod.
N 53 E 100.36' PK/remon tag southeast side power pole
S 43 E 83.98' PK/remon tag northeast side power pole
S 51 W 56.80' PK/remon tag southeast side telephone pole
N 25 W 75.25' PK/remon tag southwest side power pole



Handwritten note: 9.00 2.00 file

Signed by Joseph C. Kapelczak
Surveyor's Michigan License No. 24598

Date 7/16/96

COPY

LIBER 16874 PG 144

LAND CORNER RECORDATION CERTIFICATE Filing Requirement of Act 74, Mich. P.A. 1970

For corners in

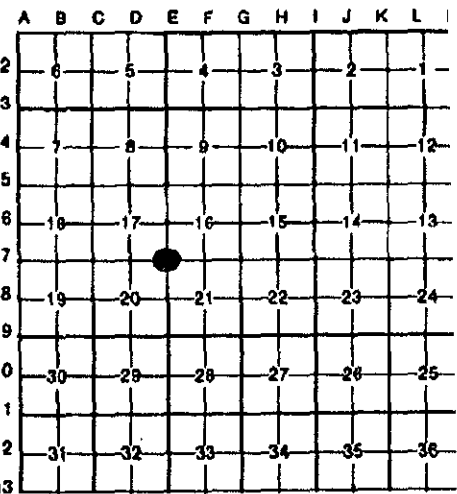
<u>Oakland</u> (county)	Located In:	Corner Code #
1. Public Land Survey	T <u>1N</u> R <u>8E</u>	<u>E-7 (page 2)</u>
	T _____ R _____	_____
	T _____ R _____	_____
	T _____ R _____	_____
2. Property Controlling in Section	S _____ T _____ R _____	_____
	S _____ T _____ R _____	_____
3. Miscellaneous Property in Sec.	S _____ T _____ R _____	_____
	S _____ T _____ R _____	_____

Compliance with
ACT 345, P.A. 1990
APPROVED ON: 7-31-96 TMS
OAKLAND COUNTY REMONUMENTATION
PEER GROUP COMMITTEE
Register of Deeds Stamp & File Number

4. Lot No. _____, Recorded Plat _____

5. Private Claims _____

I, Joseph C. Kapelczak, in a field survey on 23 January, 1996, do hereby certify that under requirements of P.A. 74, Michigan P.A. of 1970, the corner points mentioned in lines 1 and 2 above were in conformance with regulations and rules therefore as required in the current manual of survey instructions of the United States Department of the Interior, Bureau of Land Management or by a decree of a Court of Law and/or that the corner points mentioned in lines 3, 4 and 5 above were in conformance with the rules of the Michigan Board of Land Surveyors or by a Decree of a Court of Law; established, re-established, monumented, re-monumented, recovered, found as expressed below:



NOTE: Not more than 4 corners, all in the same town and range, may be recorded on this certificate.

A. Description of original monument and accessories and/or subsequent restoration:
(Page 2)

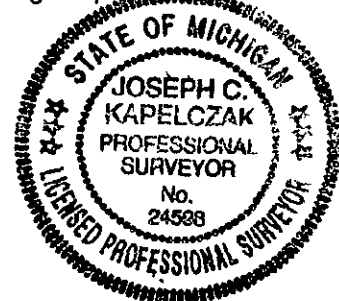
- | | |
|---|---|
| LCRC L11545 P143 | LCRC L11432 P168 |
| Milletics, 1989, steel rod in mon. box | Zeimet, 1990, iron bar in mon. box |
| N 40 E 98.65' Nail east side trible Maple | *N 45 E 100.30' Nail /washer west face utility pole |
| *S 45 E 84.11' Nail/washer s.west side utility pole | *S 45 W 56.82' Nail/washer east face utility pole |
| *S 45 W 56.85' Nail/washer s.east side utility pole | *N 30 W 75.50' Nail/washer s.west face utility pole |
| *N 30 W 75.52' Nail/washer s.west side utility pole | |
| LCRC L12689 P184 Dwyer, 1992, iron in handhole | *N 30 W 75.50' Nail/tag J&A west face power pole |
| *S 42 E 84.12' Nail/tag J&A s.west face power pole | *N 53 E 100.33' Nail/washer n.west face MBT pole |
| *S 52 W 56.85' Nail/washer s.east face utility pole | |
- B. Description of corner evidence found and/or method applied in restoring or reestablishing corner: *confirms LCRC witness

C. Description of monument for corner and accessories established to perpetuate locating the position of the corner:

SURVEY &
REMONUMENTATION

MAY 22 1997

COMMISSION



Signed by Joseph C. Kapelczak
Surveyor's Michigan License No. 24598

Date 7/16/96