

COPY

LIBER 16874 PG 158

JAN 397001304

LAND CORNER RECORDATION CERTIFICATE
Filing Requirement of Act 74, Mich. P.A. 1970

For corners in

Table with columns: Oakland (county), Located In, Corner Code #. Rows include Public Land Survey, Property Controlling in Section, and Miscellaneous Property in Sec.

\$ 7.00 MISCELLANEOUS RECORDING
\$ 2.00 REMONUMENTATION
3 JAN 97 7:52 A.M. RECEIPT# 88
PAID RECORDED - OAKLAND COUNTY
LYNN D. ALLEN, CLERK/REGISTER OF DEEDS

Compliance with ACT 345, P.A. 1990
APPROVED ON: 12-9-96 JS
OAKLAND COUNTY REMONUMENTATION PEER GROUP COMMITTEE

Register of Deeds Stamp & File Number

4. Lot No. , Recorded Plat
5. Private Claims

I, Joseph C. Kapelczak, in a field survey on 7 February, 1996 do hereby certify that under requirements of P.A. 74, Michigan P.A. of 1970, the corner points mentioned in lines 1 and 2 above were in conformance with regulations and rules therefore as required in the current manual of survey instructions of the United States Department of the Interior, Bureau of Land Management or by a decree of a Court of Law and/or that the corner points mentioned in lines 3, 4 and 5 above were in conformance with the rules of the Michigan Board of Land Surveyors or by a Decree of a Court of Law, established, re-established, monumented, re-monumented, recovered, found as expressed below:

Grid table with columns A-M and rows 2-13. Contains numerical data points for survey locations.

NOTE: Not more than 4 corners, all in the same town and range, may be recorded on this certificate.

A. Description of original monument and accessories and/or subsequent restoration:

Post set up 1815 G.L.O. survey: S 65°E 18 lks, 8" Sugar; North 19 lks, 8" Hickory.
No LCRC's recorded at Oakland County for these corners.

B. Description of corner evidence found and/or method applied in restoring or reestablishing corner:

Recovered a nail in monument box at the centerline of Eight Mile Road & Beck Road.
Recovered Witnesses:

- N 50°E 74.61' PK/tag #WCR southeast side power pole
N 50°E 74.75' Nail/tag #16034 northwest side power pole
N 39°E 72.99' Nail/washer northwest side telephone pole
N 16°W 90.00' Nail/tag #16034 east side telephone pole
N 16°W 90.04' Nail/tag #WCR east side telephone pole

C. Description of monument for corner and accessories established to perpetuate locating the position of the corner:

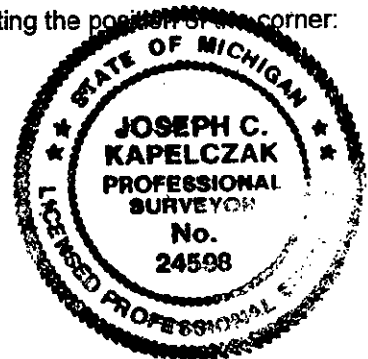
- Set 5/8" rod with Oakland County remonumentation brass cap in monument box.
N 49°E 74.80' PK/remon tag in northwest side power pole
N 16°W 89.98' PK/remon tag in east side telephone pole
S 50°W 86.73' PK/remon tag in northwest side power pole
S 53°E 109.04' PK/remon tag in southwest side power pole

SURVEY & REMONUMENTATION

MAY 22 1997

COMMISSION

7.00 FILE
2.00



Signed by Joseph C. Kapelczak Date 12/16/96
Surveyor's Michigan License No. 24598