

LIBER 16850PG418

LAND CORNER RECORDATION CERTIFICATE
Filing Requirement of Act 74, Mich. P.A. 1970

Dec 19 96 306310

For corners in

Table with columns: Oakland (county), Located In, Corner Code #. Rows include Public Land Survey, Property Controlling in Section, and Miscellaneous Property in Sec.

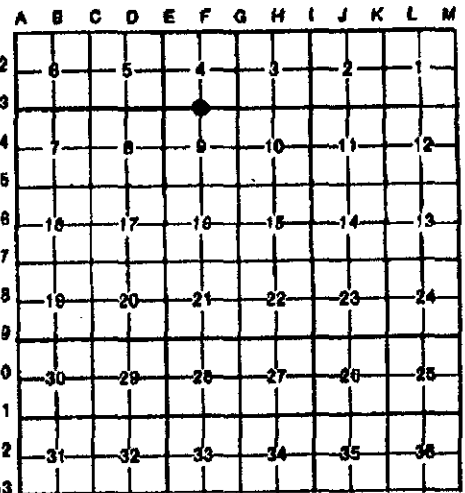
\$ 7.00 MISCELLANEOUS RECORDING
\$ 2.00 REMONUMENTATION
19 DEC 96 11:02 A.M. RECEIPT# 17B
PAID RECORDED - OAKLAND COUNTY
LYNN D. ALLEN, CLERK/REGISTER OF DEEDS

APPROVED ON 10-2-96
OAKLAND COUNTY REMONUMENTATION
PEER GROUP COMMITTEE
Register of Deeds Stamp & File Number

4. Lot No. Recorded Plat

5. Private Claims

I, Joseph C. Kapelczak, in a field survey on 23 January, 1996, do hereby certify that under requirements of P.A. 74, Michigan P.A. of 1970, the corner points mentioned in lines 1 and 2 above were in conformance with regulations and rules therefore as required in the current manual of survey instructions of the United States Department of the Interior, Bureau of Land Management or by a decree of a Court of Law and/or that the corner points mentioned in lines 3, 4 and 5 above were in conformance with the rules of the Michigan Board of Land Surveyors or by a Decree of a Court of Law; established, re-established, monumented, re-monumented, recovered, found as expressed below:



NOTE: Not more than 4 corners, all in the same town and range, may be recorded on this certificate.

A. Description of original monument and accessories and/or subsequent restoration:

Set post in 1816 G.L.O. survey: S58E 10lks 4" Poplar N 48-1/2W 46 lks 13" Ash
LCRC L.8335 P.560 Kapelczak 1982 1/2" rerod LCRC L.13481 P.181 Thompson 1993
N 75 W 157.48' PK nail in MBT pole 1" bar in Monument Box
N 65 E 89.21' PK nail south side MBT pole Cannot decipher witnesses.
S 30 E 76.86' nail east side power pole
South 52.61' nail in east side 5" Locust

LCRC L.11732 P.175 Murphy 1990 1" bar Survey in Sec. 4 Kapelczak 1995 L.15423 P.134
NW 157.48' PK nail north side pole F-3 N 75 W 157.48 PK nail in MBT pole
SE 76.68' PK nail east side pole N 65 E 89.21' PK nail south side MBT pole
NE 89.21' PK nail south side pole S 30 E 76.86' nail east side power pole
S 72.58' MPK Tag #604 southeast side 6" tree S 52.61' nail east side 5" Locust

B. Description of corner evidence found and/or method applied in restoring or reestablishing corner:

Recovered 1/2" rerod Cap #24598 in Monument Box 1.0' south centerline West Road

Recovered witnesses:

N 75 W 157.61' nail w/tag 12584 south side MBT pole
N 64 E 89.12' PK nail south side pole
N 64 E 89.51 nail w/tag #12584 southeast side MBT pole
N 64 E 89.27' nail w/tag GW #56696 south side MBT pole
S 56 E 104.47' PK nail w/tag #24598 northeast side MBT pole
S 21 E 76.66' PK nail w/tag #GW 56696 southwest side power pole
S 22 E 76.79' PK nail northeast side power pole
S 06 W 52.69' nail w/tag #23828 west side 10" Elm
N 86 W 19.89' 1/2" rerod in Monument Box Cap #24598
N 04 E 33.61' 1/2" rerod southwest corner 22-04-451-003

C. Description of monument for corner and accessories established to perpetuate locating the position of the corner

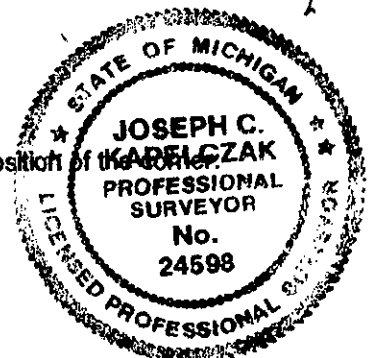
Set Remonumentation Brass Cap.

N 64 E 89.49' set nail w/remon tag in southeast side MBT pole
S 65 E 120.80' set nail w/remon tag in southwest side 26" Pine
S 56 E 104.42' set nail w/remon tag in northeast side MBT pole
S 22 E 76.79 set nail w/remon tag in northeast side power pole

SURVEY & REMONUMENTATION

MAY 22 1997

COMMISSION



Signed by Joseph C. Kapelczak
Surveyor's Michigan License No. 24598

Date 10/1/96