

LAND CORNER RECORDATION CERTIFICATE
Filing Requirement of Act 74, Mich. P.A. 1970

For corners in

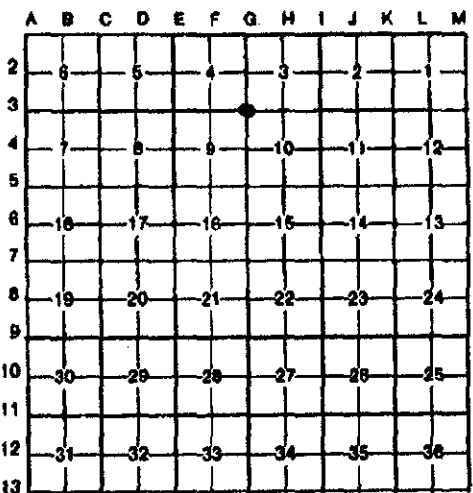
Table with columns: Oakland (county), Located In: (Town/Range), Corner Code #. Includes entries for Public Land Survey, Property Controlling in Section, and Miscellaneous Property in Sec.

\$ 7.00 MISCELLANEOUS RECORDING
\$ 2.00 REMONUMENTATION
19 DEC 96 11:02 A.M. RECEIPT# 17B
PAID RECORDED - OAKLAND COUNTY
LYNN D. ALLEN, CLERK/REGISTER OF DEEDS

APPROVED BY: 10-2-96
OAKLAND COUNTY REMONUMENTATION
PEER GROUP COMMITTEE
Register of Deeds Stamp & File Number

4. Lot No. Recorded Plat
5. Private Claims

I, Joseph C. Kapelczak, in a field survey on 29 January, 1996, do hereby certify that under requirements of P.A. 74, Michigan P.A. of 1970, the corner points mentioned in lines 1 and 2 above were in conformance with regulations and rules therefore as required in the current manual of survey instructions of the United States Department of the Interior, Bureau of Land Management or by a decree of a Court of Law and/or that the corner points mentioned in lines 3, 4 and 5 above were in conformance with the rules of the Michigan Board of Land Surveyors or by a Decree of a Court of Law; established, re-established, monumented, re-monumented, recovered, found as expressed below:



NOTE: Not more than 4 corners, all in the same town and range, may be recorded on this certificate.

A. Description of original monument and accessories and/or subsequent restoration:

Post set in 1816 G.L.O. survey: N 85 E 9.06 lks 10" Tamarac, S 79-1/2 W 68 lks 22" Red Oak
L.C.R.C. L.13481 P.181, Thompson 1993
N 30 E 23.33' set double headed nail w/BFT flasher northwest side power pole
W 38.16' set concrete cut nail w/BFT flasher in center of concrete filled 6" diameter pipe
N 50 W 19.18' set double headed #8 nail w/BFT flasher northeast side quad 8" Poplars
S 50.00' to center of 3" steel fence post and corner

B. Description of corner evidence found and/or method applied in restoring or reestablishing corner:

Recovered 1/2" rerod w/cap #24598 in side 2" pipe in 12" wide water treatment outlet

Recovered witness.

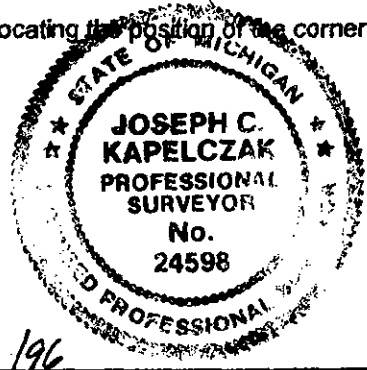
N 75 W 19.06' nail w/tag G.W.#56699 in north side 10" Poplar
N 75 W 19.15' nail w/tag #23828 northwest side power pole
N 32 E 23.34' nail w/tag #23828 northwest side power pole
N 34 E 23.16' nail south side power pole
N 34 E 23.35' nail w/tag G.W.#56699 southeast side power pole
S 30 E 24.91' punch mark northeast rim storm manhole
S 01 W 49.97' punch mark east side fence corner
S 02 W 49.97' fence corner northeast corner treatment plant

SURVEY &
REMONUMENTATION
MAY 22 1997
COMMISSION

C. Description of monument for corner and accessories established to perpetuate locating the position of the corner:

Set Remonumentation Brass Cap.

N 75 W 19.26' set nail w/remon tag north side 10" Poplar
N 32 E 23.48' set nail w/remon tag northwest side power pole
S 31 E 25.03' chisled "+" north rim storm manhole
S 88 W 38.12' chisled "+" south side 6" metal post



700 FILE
200

Signed by Joseph C. Kapelczak
Surveyor's Michigan License No. 24598

Date 10/1/96