

COPY

LIBER 16850 PG 423  
LAND CORNER RECORDATION CERTIFICATE  
Filing Requirement of Act 74, Mich. P.A. 1970

DEC 19 96 306315

For corners in

<u>Oakland</u> (county)	Located In:	Corner Code #
1. Public Land Survey	T1N R 8E	G-4
	T R	
	T R	
	T R	
2. Property Controlling in Section	S T R	
	S T R	
3. Miscellaneous Property in Sec.	S T R	
	S T R	

\$ 7.00 MISCELLANEOUS RECORDING  
\$ 2.00 REMONUMENTATION  
19 DEC 96 11:02 A.M. RECEIPT# 178  
PAID RECORDED - OAKLAND COUNTY  
LYNN D. ALLEN, CLERK/REGISTER OF DEEDS

Compliance with  
ACT 74, P.A. 1970

APPROVED ON: 10-2-96  
OAKLAND COUNTY REMONUMENTATION  
PEER GROUP COMMITTEE

Register of Deeds Stamp & File Number

4. Lot No. \_\_\_\_\_, Recorded Plat \_\_\_\_\_

5. Private Claims \_\_\_\_\_

I, Joseph C. Kapelczak, in a field survey on 29 January, 1996, do hereby certify that under requirements of P.A. 74, Michigan P.A. of 1970, the corner points mentioned in lines 1 and 2 above were in conformance with regulations and rules therefore as required in the current manual of survey instructions of the United States Department of the Interior, Bureau of Land Management or by a decree of a Court of Law and/or that the corner points mentioned in lines 3, 4 and 5 above were in conformance with the rules of the Michigan Board of Land Surveyors or by a Decree of a Court of Law; established, re-established, monumented, re-monumented, recovered, found as expressed below:

A	B	C	D	E	F	G	H	I	J	K	L	M
2	6	6	4	3	2	1						
3												
4	7	8	9	10	11	12						
5												
6	18	17	16	15	14	13						
7												
8	19	20	21	22	23	24						
9												
10	30	29	28	27	26	25						
11												
12	31	32	33	34	35	36						
13												

NOTE: Not more than 4 corners, all in the same town and range, may be recorded on this certificate.

A. Description of original monument and accessories and/or subsequent restoration:

Post set in 1816 G.L.O. survey: N 64 E 5 lks 8" Aspen. S 70 W 16 lks 7" Aspen.

- L.C.R.C. L.13481 P.181, Thompson 1993, found 2" pipe
- N 20.98' found nail w/tag #24598 (JCK) west side 10" Ash
- N 70 E 16.04' found 1/2" iron
- S 85 E 26.21' set double headed nail w/BFT flasher north side 24" Oak
- S 30 E 20.23' found nail w/tag #24598 southwest side 42" Oak
- S 60 W 19.07' set double headed #8 nail w/BFT tag southeast side 8" Cherry

B. Description of corner evidence found and/or method applied in restoring or reestablishing corner:

Recovered 2" pipe. No Monument Box.

Recovered witness.

- N 06 E 20.38' nail w/tag #24598 west side 10" Ash
- S 82 E 26.00' nail w/tag #56689 north side 24" Oak
- S 82 E 26.25' nail w/tag #23828 north side 24" Oak
- S 36 E 20.23' nail w/tag #24598 southwest side 36" Oak
- S 60 W 19.10' nail w/tag #23828 south side 10" Cherry

C. Description of monument for corner and accessories established to perpetuate locating the position of the corner:

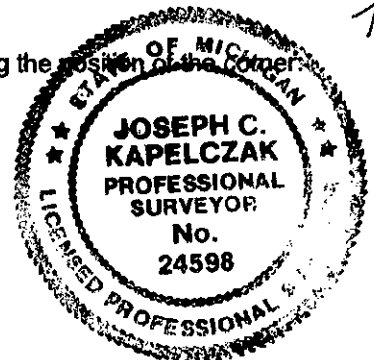
Set Remonumentation Brass Cap.

- N 06 E 20.38' set nail w/remon tag west side 10" Ash
- S 82 E 26.05' set nail w/remon tag north side 24" Oak
- S 36 E 20.23' set nail w/remon tag southwest side 36" Oak
- N 88 W 23.52' set nail w/remon tag south side 12" Basswood

SURVEY &  
REMONUMENTATION

MAY 22 1997

COMMISSION



Signed by Joseph C. Kapelczak  
Surveyor's Michigan License No. 24598

Date 10/1/96