

COPY

LIBER 16874 PG 188

JAN 3 97 00 1334

LAND CORNER RECORDATION CERTIFICATE
Filing Requirement of Act 74, Mich. P.A. 1970

For corners in

Form with fields for Oakland (county), Located In, Corner Code #, and numbered sections 1-5 for Public Land Survey, Property Controlling in Section, Miscellaneous Property in Sec., Lot No., and Private Claims.

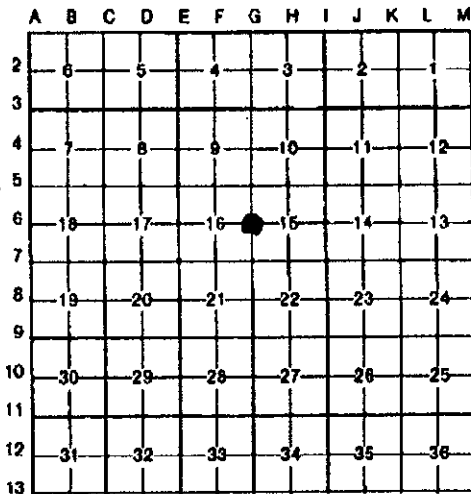
\$ 7.00 MISCELLANEOUS RECORDING
\$ 2.00 REMONUMENTATION
3 JAN 97 7:36 A.M. RECEIPT# 88
PAID RECORDED - OAKLAND COUNTY
LYNN D. ALLEN, CLERK/REGISTER OF DEEDS

Compliance with ACT 345, P.A. 1990
APPROVED ON: 7-21-96 TMS
OAKLAND COUNTY REMONUMENTATION PEER GROUP COMMITTEE
Register of Deeds Stamp & File Number

4. Lot No. , Recorded Plat

5. Private Claims

I, Joseph C. Kapelczak in a field survey on 23 January, 1996, do hereby certify that under requirements of P.A. 74, Michigan P.A. of 1970, the corner points mentioned in lines 1 and 2 above were in conformance with regulations and rules therefore as required in the current manual of survey instructions of the United States Department of the Interior, Bureau of Land Management or by a decree of a Court of Law and/or that the corner points mentioned in lines 3, 4 and 5 above were in conformance with the rules of the Michigan Board of Land Surveyors or by a Decree of a Court of Law, established, re-established, monumented, re-monumented, recovered, found as expressed below:



NOTE: Not more than 4 corners, all in the same town and range, may be recorded on this certificate.

A. Description of original monument and accessories and/or subsequent restoration: Post set in 1816 G.L.O. survey; S 32 W 11k, 5" Beech; N 48 E 241ks, 4" Beech.

LCRC L6240 P749
Titworth, 1974, 3/4" pipe
N 48 E 97.35' Northwest corner Hse #26930
S 87 E 20.40' PK nail Detroit Edison pole
N 87 W 27.62' PK nail Detroit Edison pole

LCRC L8335 P573
Kapelczak, 1982, 1/2" rerod
West 78.03' Nail in north side power pole
N 50 E 88.33' Northwest corner porch slab for house
N 85 E 41.38' Nail in south side 8" Cedar
S 80 E 50.0', 75.00' & 100.00' Set tacked stakes
S 70 W 50.00', 75.00' & 100.00' Set tacked stakes
(These stakes were set for replacement of corner after construction)

B. Description of corner evidence found and/or method applied in restoring or reestablishing corner:

Recovered 1/2" rerod in gravel road, 2.50' west of centerline.

Recovered witnesses:

- S 82 E 20.57' PK/shinner north side telephone pole
N 86 W 27.31' PK/shinner north side power pole
N 34 E 55.48' PK/shinner #14864 southwest side 8" Maple
N 85 W 32.50' 1" pipe in concrete monument northeast corner parcel #22-16-426-005

C. Description of monument for corner and accessories established to perpetuate locating the position of the corner:

Set O.C. remonumentation brass cap on existing 1/2" rerod.

- N 34 E 55.54' PK/remon tag northwest side 8" Maple
S 89 E 41.74' PK/remon tag south side twin 10" Cedar
S 82 E 20.59' PK/remon tag north side power pole
N 86 W 27.22' PK/remon tag north side power pole



Handwritten notes: 7.00, 2.00, Dille

Signed by Joseph C. Kapelczak Date 7/12/96
Surveyor's Michigan License No. 24598