

LAND CORNER RECORDATION CERTIFICATE
Filing Requirement of Act 74, Mich. P.A. 1970

For corners in

<u>Oakland</u> (county)	Located In:	Corner Code #
1. Public Land Survey	T1N R8E J-9	
	T R	
	T R	
	T R	
2. Property Controlling in Section	S T R	
	S T R	
3. Miscellaneous Property in Sec.	S T R	
	S T R	

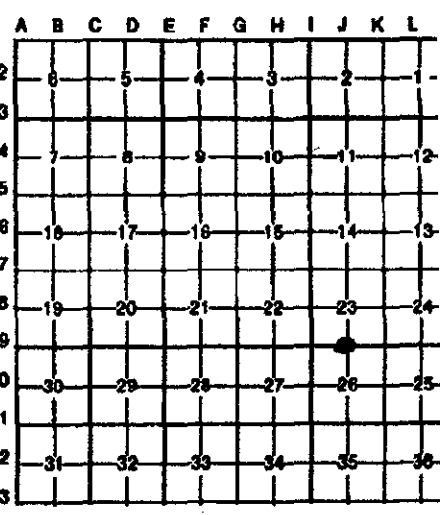
\$ 7.00 MISCELLANEOUS RECORDING
 \$ 2.00 REMONUMENTATION
 19 JUL 95 2:04 P.M. RECEIPT# 71A
 PAID RECORDED - OAKLAND COUNTY
 LYNN D. ALLEN, CLERK/REGISTER OF DEEDS

Compliance with
 ACT 345, P.A. 1990
 APPROVED ON: 7-12-95 Tom S
 OAKLAND COUNTY REMONUMENTATION
 PEER GROUP COMMITTEE

Register of Deeds Stamp & File Number

4. Lot No. _____, Recorded Plat _____
 5. Private Claims _____

I, Joseph C. Kapelczak, in a field survey on February 14, 1995, do hereby certify that under requirements of P.A. 74, Michigan P.A. of 1970, the corner points mentioned in lines 1 and 2 above were in conformance with regulations and rules therefore as required in the current manual of survey instructions of the United States Department of the Interior, Bureau of Land Management or by a decree of a Court of Law and/or that the corner points mentioned in lines 3, 4 and 5 above were in conformance with the rules of the Michigan Board of Land Surveyors or by a Decree of a Court of Law, established, re-established, monumented, re-monumented, recovered, found as expressed below:



NOTE: Not more than 4 corners, all in the same town and range, may be recorded on this certificate.

A. Description of original monument and accessories and/or subsequent restoration:
 Post set in 1816 G.O.L. survey: S 30 E 22lks, 10" Sugar; N 67 1/2 W 16lks, 12" Sugar.

- LCRC L7743 P 34
- Lippincott 1980
- Fd. PK nail
- N 45 E 35.81' PK w/washer in top of concrete curb
- *S 50 E 58.33' PK w/washer in top of asphalt curb
- S 02 E 52.92' Nail w/washer in power pole
- N 45 W 49.90' Nail w/washer in power pole

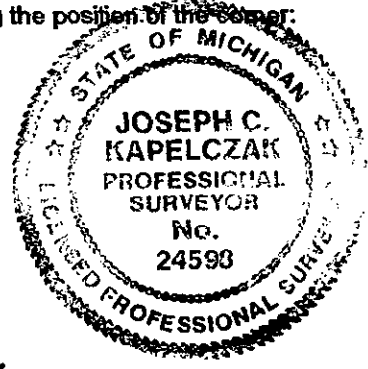
B. Description of corner evidence found and/or method applied in restoring or reestablishing corner:
 Recovered monument box (no iron inside) 1.50' north of centerline 10 Mile Rd.

- Recovered witnesses:
- *S 52 E 58.26' PK w/washer in top of asphalt curb
 - N 39 E 49.65' Nail w/OCRC tag southwest side power pole (dead)
 - N 41 W 52.41' Nail w/GLA tag #28400 southwest side power pole
 - S 03 W 51.87' Nail tag #28400 east side power pole
 - N 80 E 129.42' Nail tag #28400 northwest side power pole
 - S 06 W 60.05' 1/2" rerod northeast corner parcel #22-26-126-001

* confirms LCRC witness

C. Description of monument for corner and accessories established to perpetuate locating the position of the corner:
 Set 5/8" rerod with remonumentation brass cap in monument box

- N 41 W 52.36' PK/remon tag southwest side power pole
- S 03 W 51.93' PK/remon tag east side power pole
- S 21 E 133.84' PK/remon tag southwest side 8" dia. Ash
- N 80 E 130.19' PK/remon tag south side power pole



Signed by Joseph C. Kapelczak
 Surveyor's Michigan License No. 24598

Date 6/28/95

7.00
2.00
RHS